

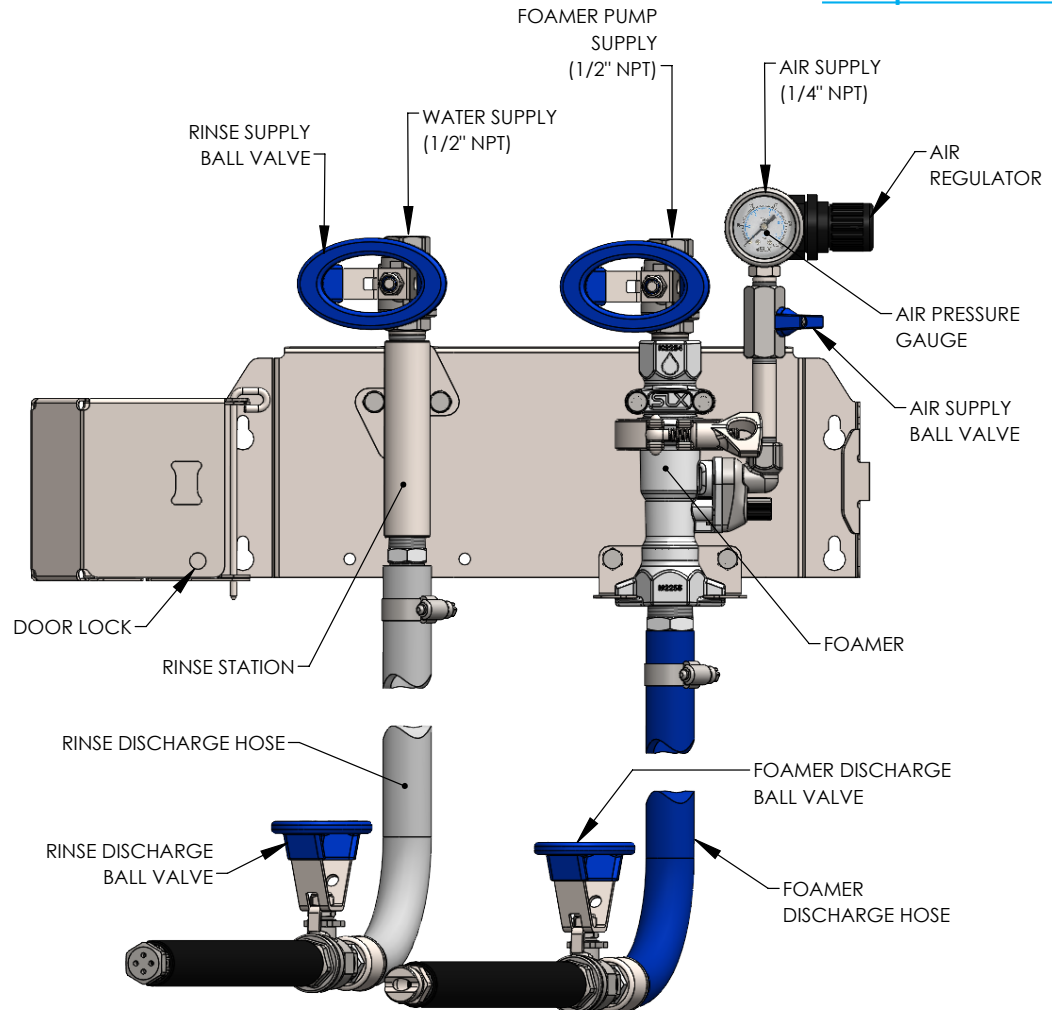


**CAUTION!** Wear appropriate PPE when working with chemicals.

## 1 Install and Connect

- A. Mount SLX enclosure to wall
- B. Flush supply lines
- C. Connect supply lines:
  - Compressed air (1/4" NPT)
  - Pump supply (1/2" NPT)
  - Water (1/2" NPT)
- D. Connect discharge hoses

### Example Installation



## 2 Operation

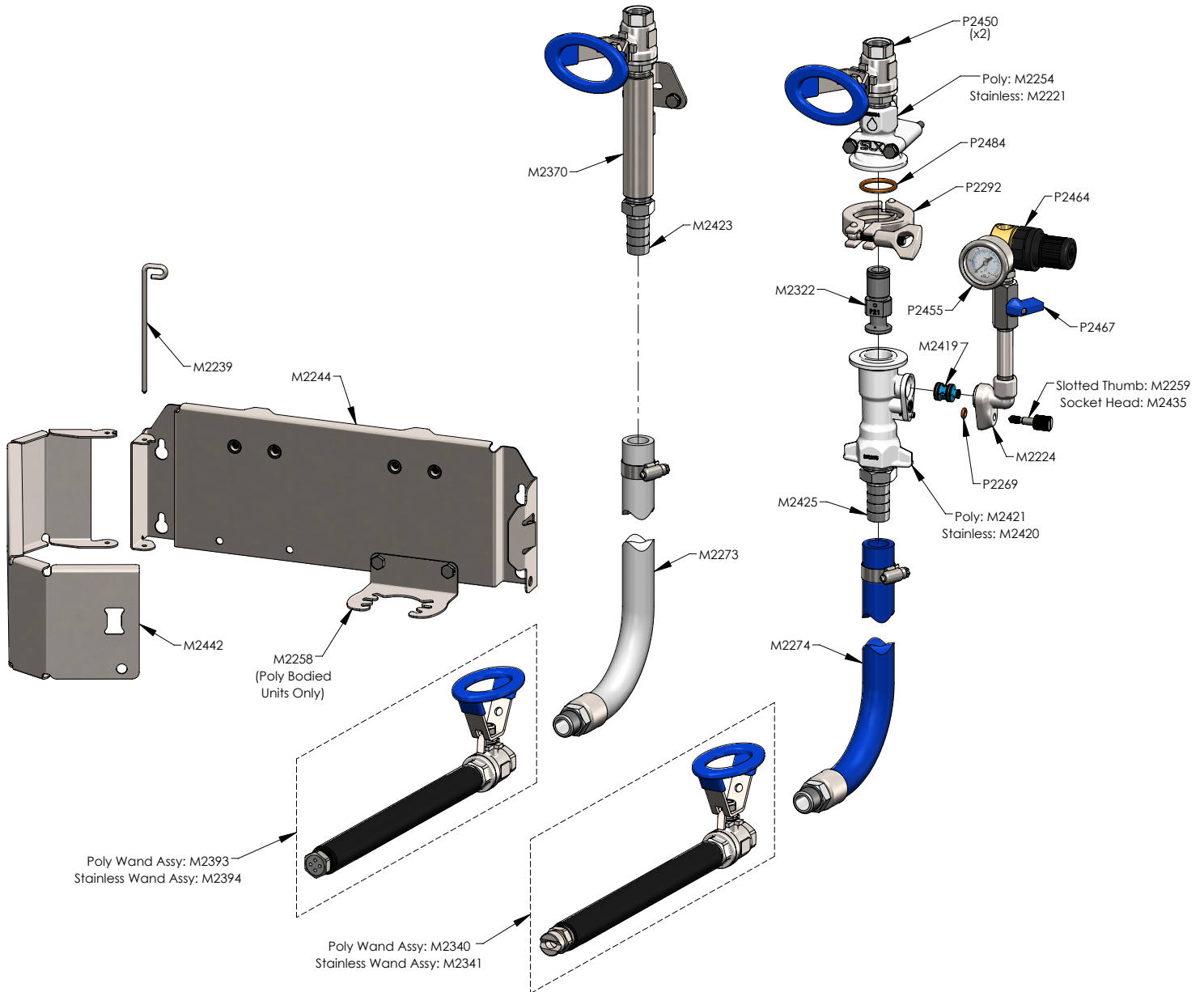
- A. Take hold of spray wand of any station
- B. Open discharge ball valve
- C. Open pump supply valve for the station - unit will spray
- D. [Foamer] Open air supply valve - unit will foam
- E. [Foamer] Adjust air pressure to alter foam quality
- F. Foam equipment, from bottom to top, and rinse before it dries
- G. Rinse equipment, from top to bottom
- H. When complete, turn off supply valves for all stations
- I. Store hoses depressurized, with discharge valves open, and coiled properly to prevent kinks



**CAUTION!** Wear appropriate PPE when working with chemicals.

**Parts will vary depending on model configuration.**

Please consult User Manual or contact us for more details.



**Purchase Replacement Parts:**



**View User Manual for  
More Details:**

