

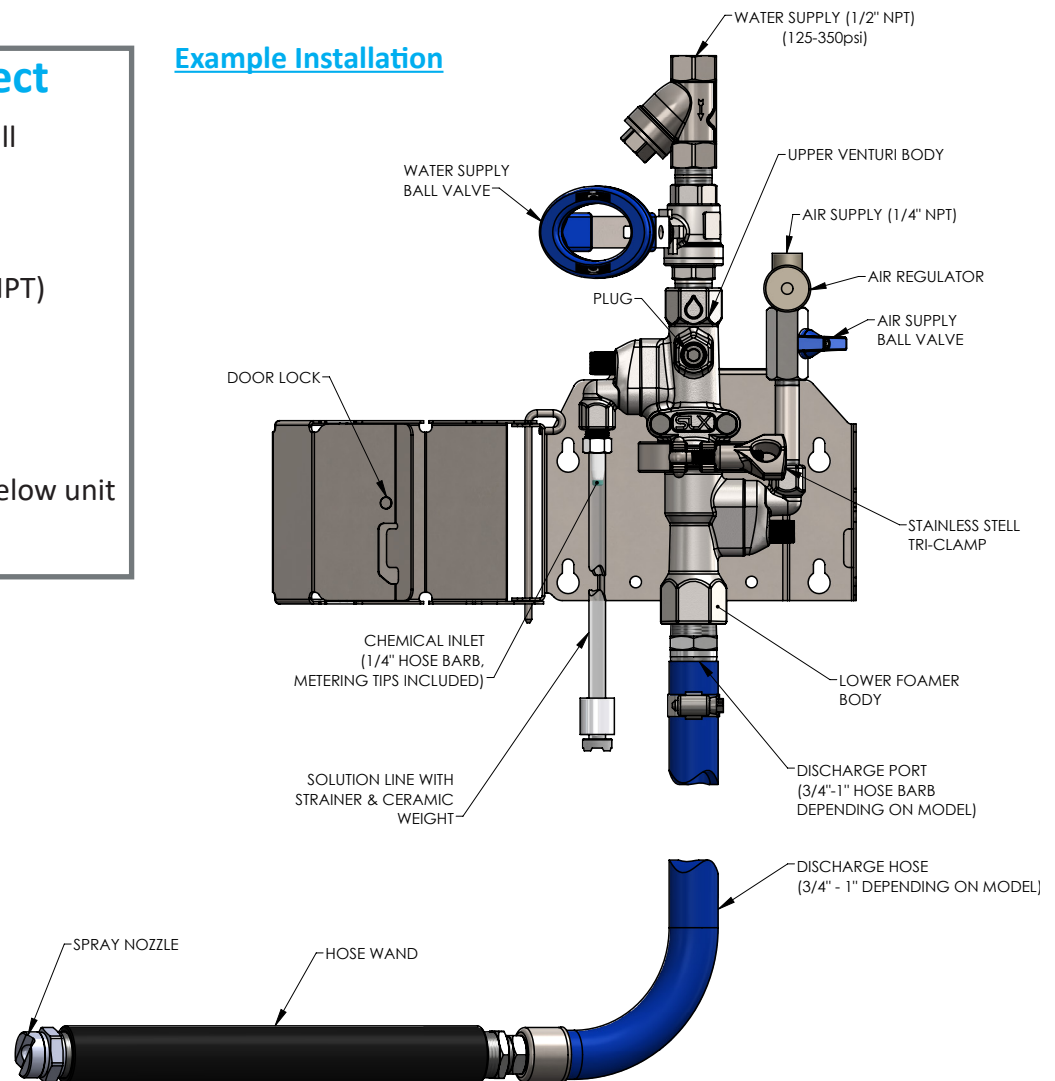


CAUTION! Always use care and wear appropriate PPE when working with chemicals!

1 Install and Connect

- Mount SLX enclosure to wall
- Flush supply lines
- Connect supply lines:
 - Compressed air (1/4" FNPT)
 - Water (1/2" FNPT)
- Connect discharge hose
- Connect hose wand
- Place chemical container below unit and drop in suction line

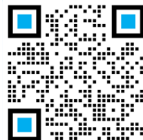
Example Installation



2 Dilution

- Select a metering tip for desired dilution ratio
- Install the metering tip by screwing it onto the hose barb for the chemical inlet
- Install chemical suction line to hose barb
- Connect suction line to chemical solution

**Metering Tip Calculator
Mobile App:**



3 Operation

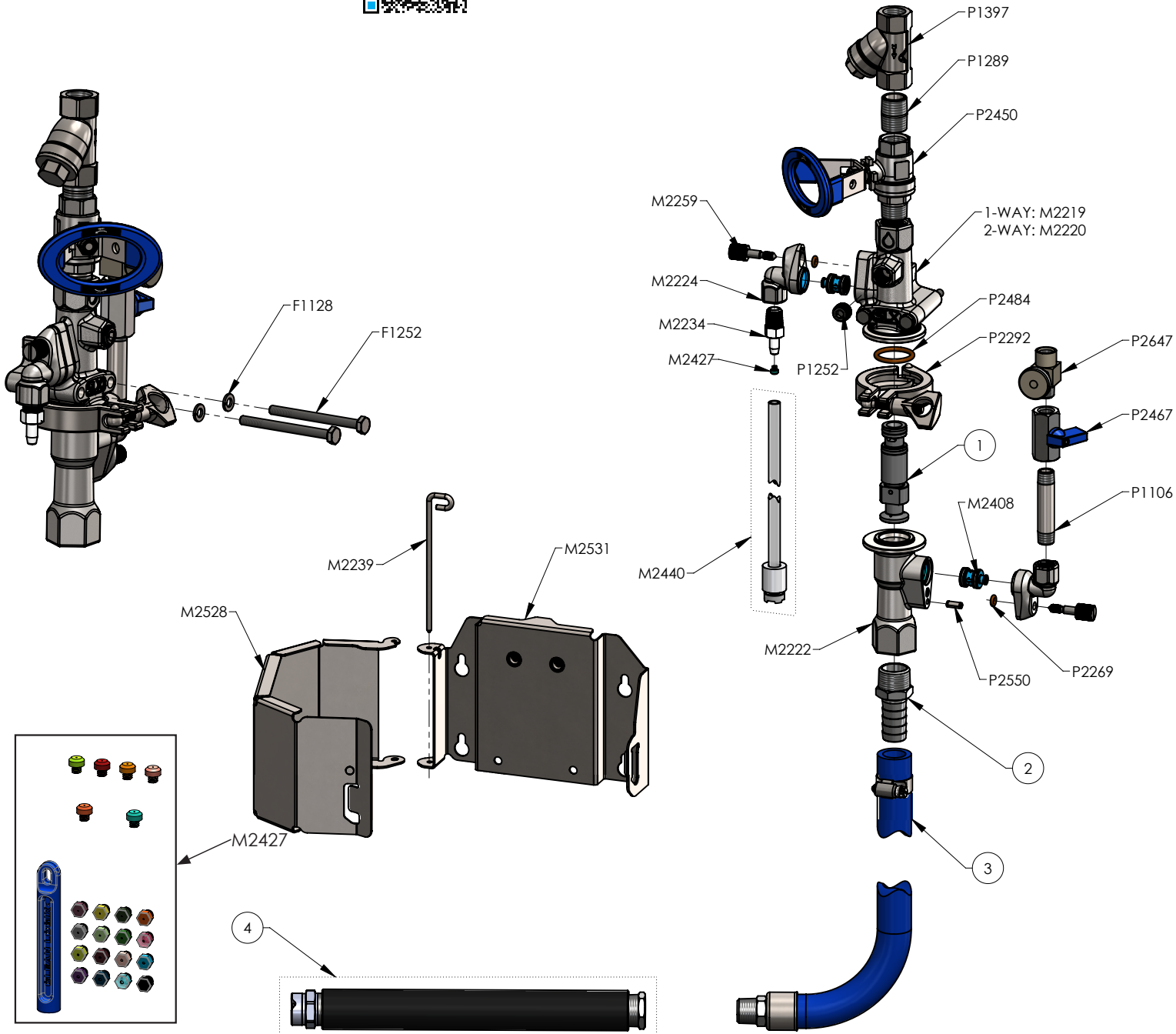
- Take hold of spray wand
- Open water supply valve - unit will spray
- Verify water pressure is **at least** 125 PSI
- Open air supply valve - unit will foam
- Adjust air needle valve to alter foam quality
- Foam equipment and rinse before it dries
- When complete, turn off supply valves
- Store rinsed hose depressurized, with discharge valve open, and coiled properly to prevent kinks

Parts will vary depending on model configuration.
Please consult User Manual or contact us for more details.

Purchase Replacement Parts:



**View User Manual for
More Details:**



Insert Size	Flow Rate (GPM)	(1) Insert #	(2) Hose Barb #	(3) Hose #	(4) Nozzle #
V28	2.8	M2616	M2425	M2273	M2641
V90	9.0	M2618	M2426	M2277	M2656