



---

# USER MANUAL

---

MODEL:

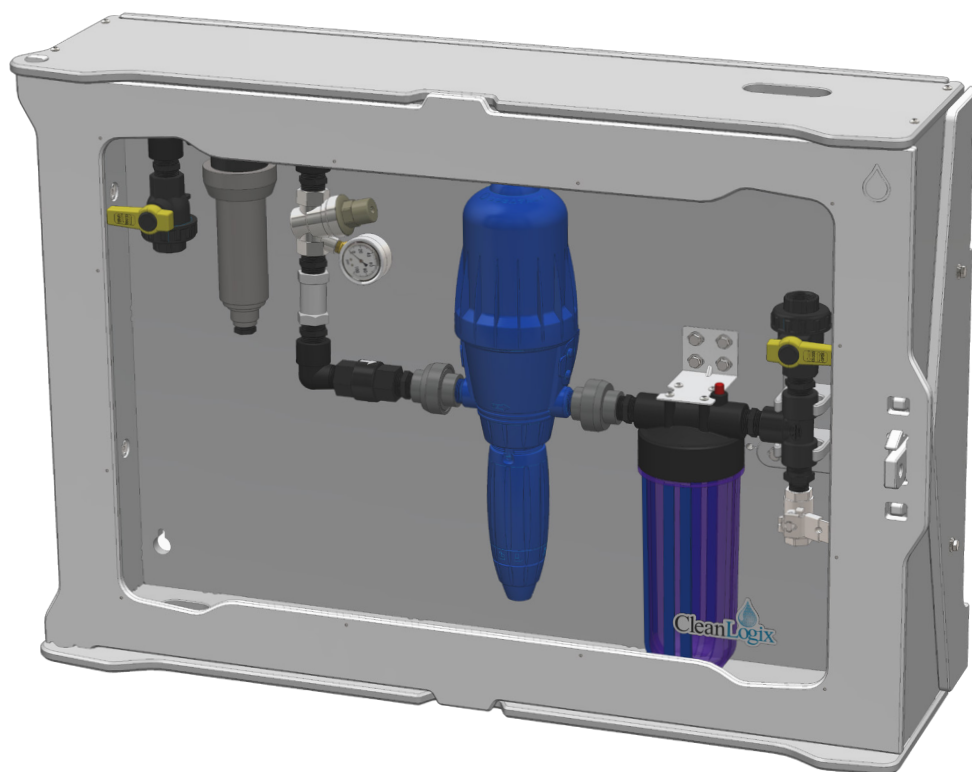
**PBX-CAB-DOS**

**Dosing Pump Cabinet**

---

*English (Original Instructions)*

*Updated: 03/25/21*



## Table of Contents

Overview .....	03
Mounting Cabinet	
Wall Mounting .....	04
Rail Mounting .....	05
Installing Plumbing	
Industrial Plumbing Kit with Dosatron.....	06
Industrial Plumbing Kit with MixRite 3.5.....	08
Maintenance .....	10
Parts Callout. ....	11



### WARNING:

1. Avoid contact of chemicals with skin and eyes. If contact occurs, see MSDS sheet for further first aid measures.
2. Follow safety instructions of chemical manufacturer (MSDS).
3. Always follow plant and OSHA guidelines about the use of equipment.
4. Disconnect pump before servicing equipment.
5. Always follow safety precautions and obey warning labels. Failure to do so could result in injury or death.

#### **PROTECT THE ENVIRONMENT**

Please dispose of packaging materials, old machine components, and hazardous fluids in an environmentally safe way according to local waste disposal regulations.



Always remember to recycle.

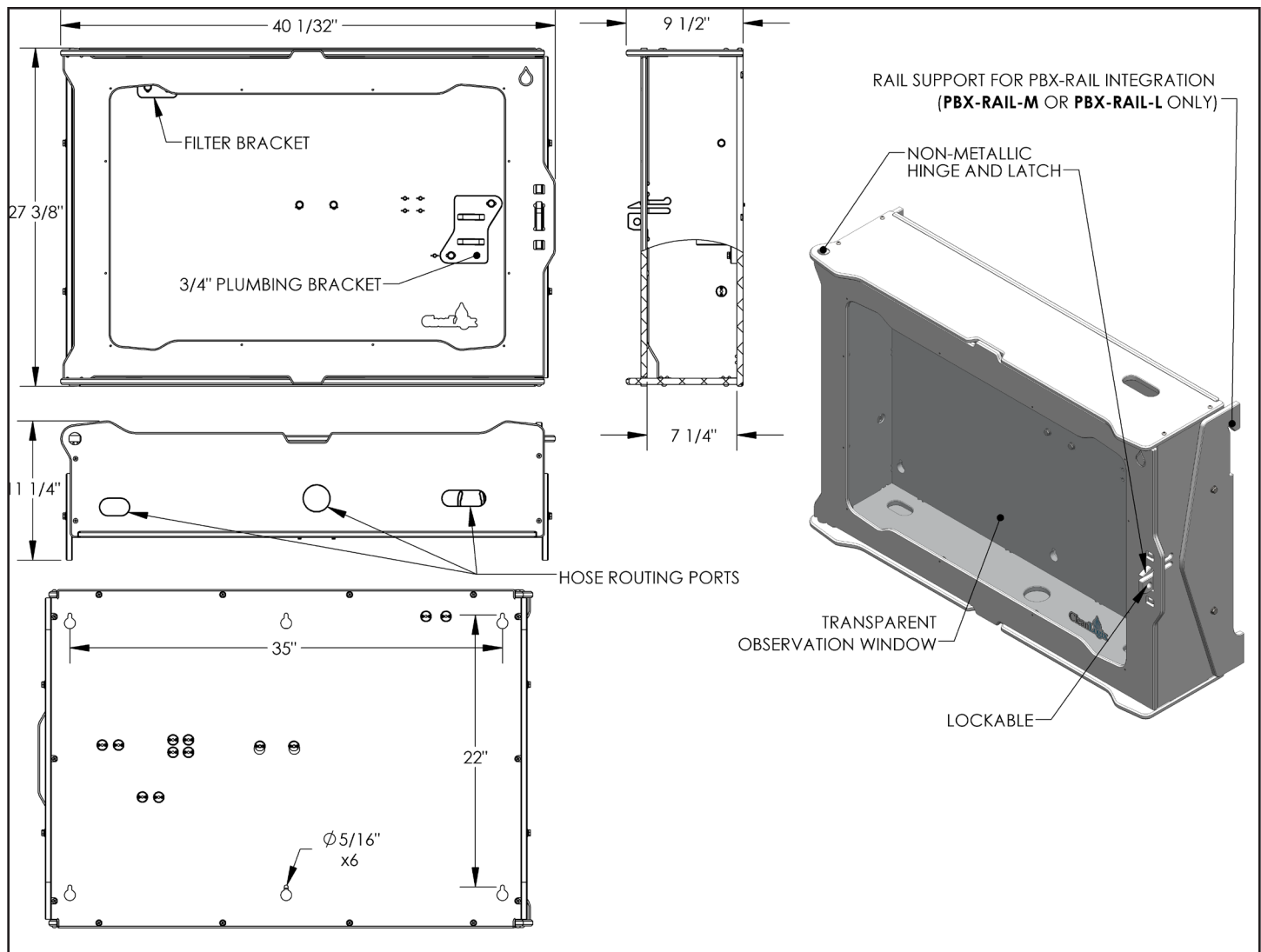
# USER MANUAL: PBX-CAB-DOS

READ ALL INSTRUCTIONS BEFORE OPERATING EQUIPMENT



## Overview

The Pump Cabinet by Clean Logix provides users a safe and effective way to contain a variety of dosing pumps to protect users against spills, sprays and other unexpected occurrences that could be hazardous.



**NOTE:** Shown with Rail Support attached for PBX-RAIL integration.

## Mounting Requirements

The Dosing Pump Cabinet by Clean Logix can be mounted in 2 different ways depending on user preference. When determining mounting location and position consider the following:

- Pump accessibility
- Distance from containers and equipment
- Distance from objects/obstacles that may impair hose functionality

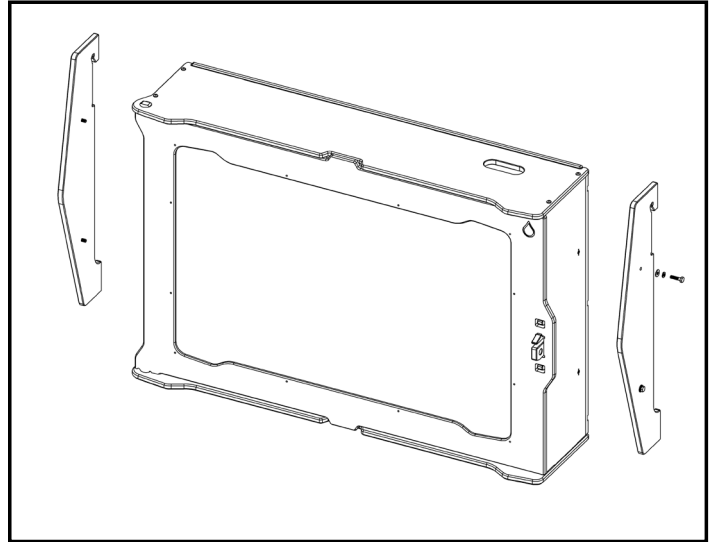
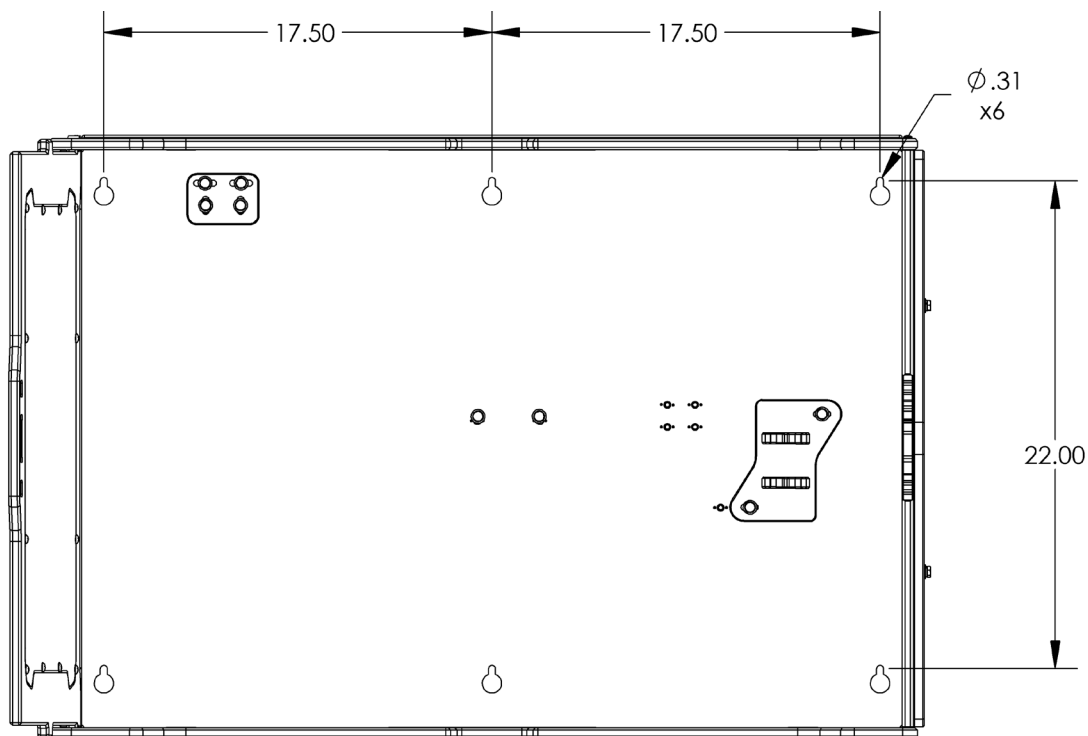


Fig. 3.1: Removing rail supports

## Keyhole Mounting

1. Remove the rail supports on either side of the cabinet [Figure 3.1]
2. Using appropriate hardware (not included) drill and secure the anchor points for the 6 keyholes
3. Mount the cabinet and tighten into place.



## Mounting Requirements (continued)

### Rail Mounting

1. To install the Pump Cabinet on a wall mounted rail (sold separately) attach the rail to the wall using appropriate hardware (not included).
2. Attach the Pump Cabinet to the rail by hooking the rail supports to the top edge of the rail at a slight angle. [Figure 4.1].
3. Let the cabinet rotate back onto the rail and rest against the wall to secure in place [Figure 4.2].

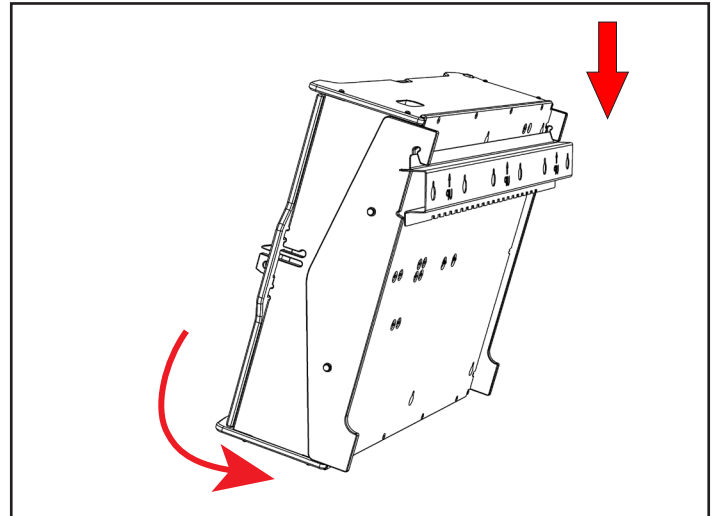


Fig. 4.1: Mounting Cabinet to rail (shown with PBX-RAIL-M)

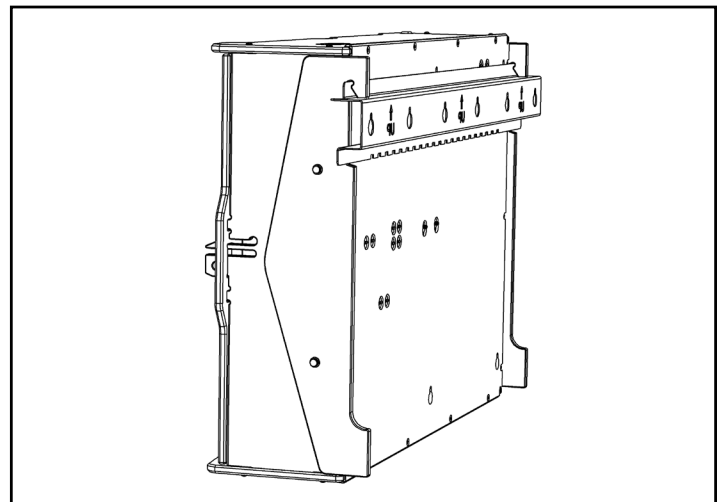


Fig. 4.2: PBX Cabinet attached to rail

4. Position the Pump Cabinet on the rail with clearance for hose routing and additional pump cabinets or boxes.

# USER MANUAL: PBX-CAB-DOS

READ ALL INSTRUCTIONS BEFORE OPERATING EQUIPMENT



## Installing Pumps

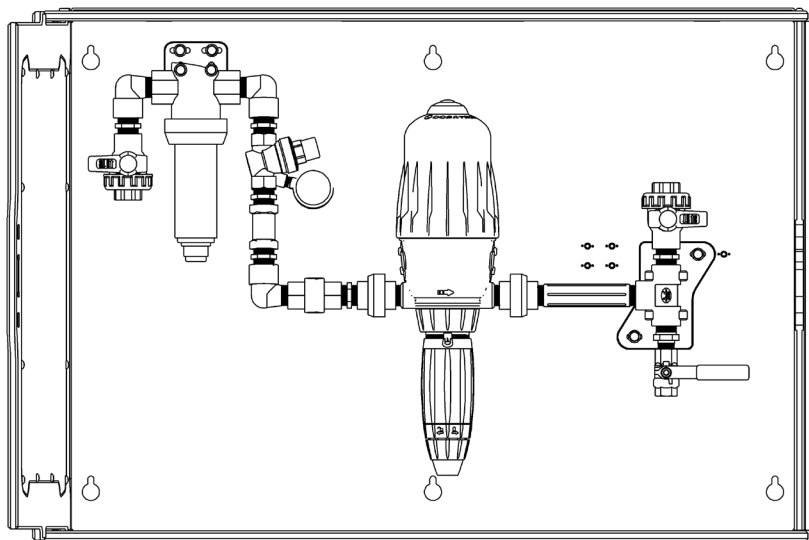
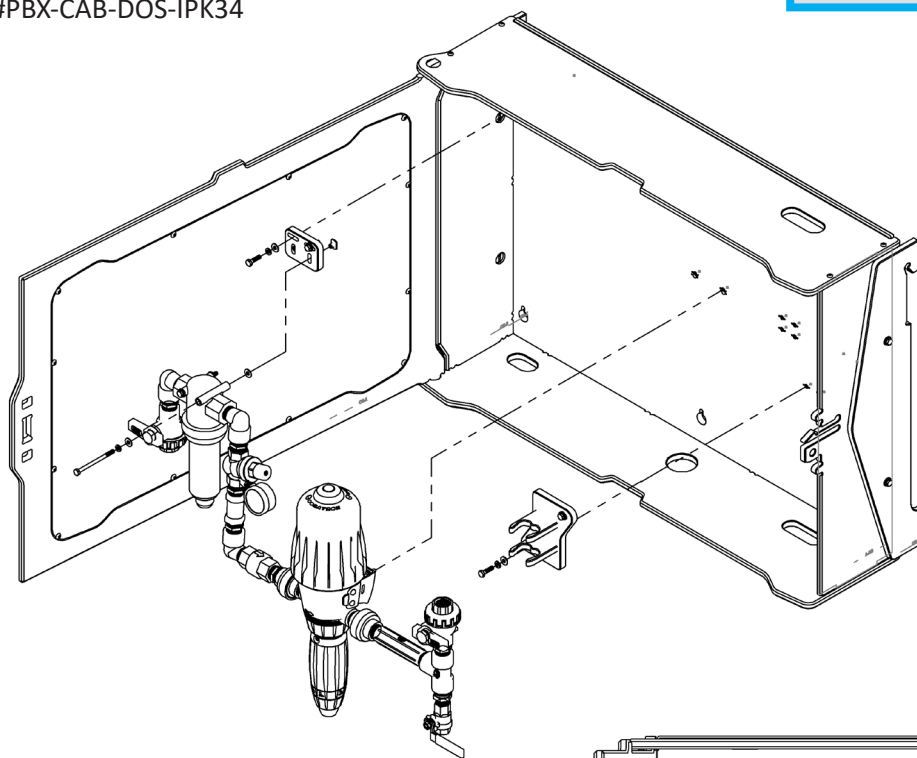
The PBX Cabinet has been designed to secure a variety of 14GPM dosing pumps, such as Dosatron® D14MZ and Dema® MixRite 3.5 pumps.

Review the following sections for suggested installation methods for the pump to be installed.

### Industrial Plumbing Kit with Dosatron

#PBX-CAB-DOS-IPK34

**NOTE:** It is recommended to install any hose barbs or fluid fittings prior to pump mounting.



# USER MANUAL: PBX-CAB-DOS

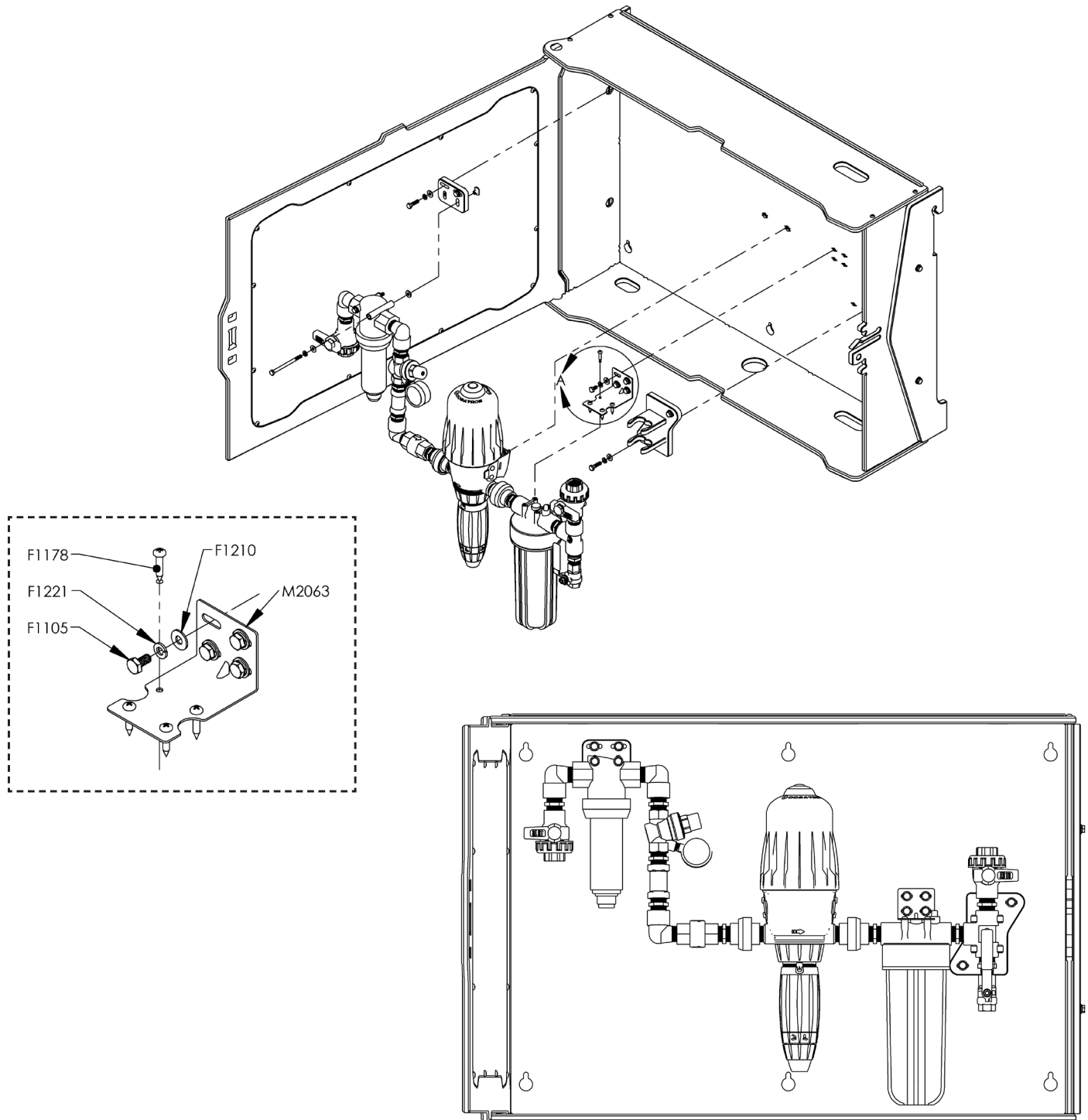
READ ALL INSTRUCTIONS BEFORE OPERATING EQUIPMENT



## Installing Pumps

### Industrial Plumbing Kit with Dosatron and Mixing Chamber

#PBX-CAB-DOS-IPK34-MC

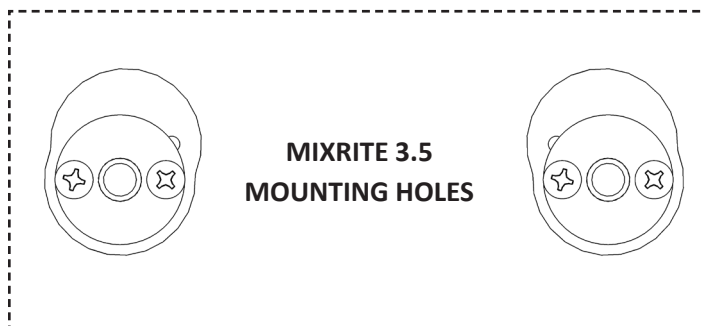
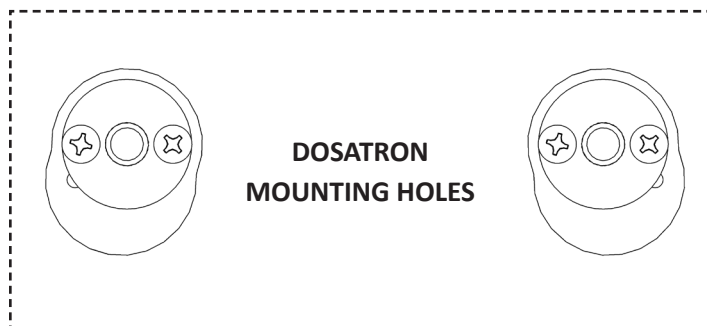
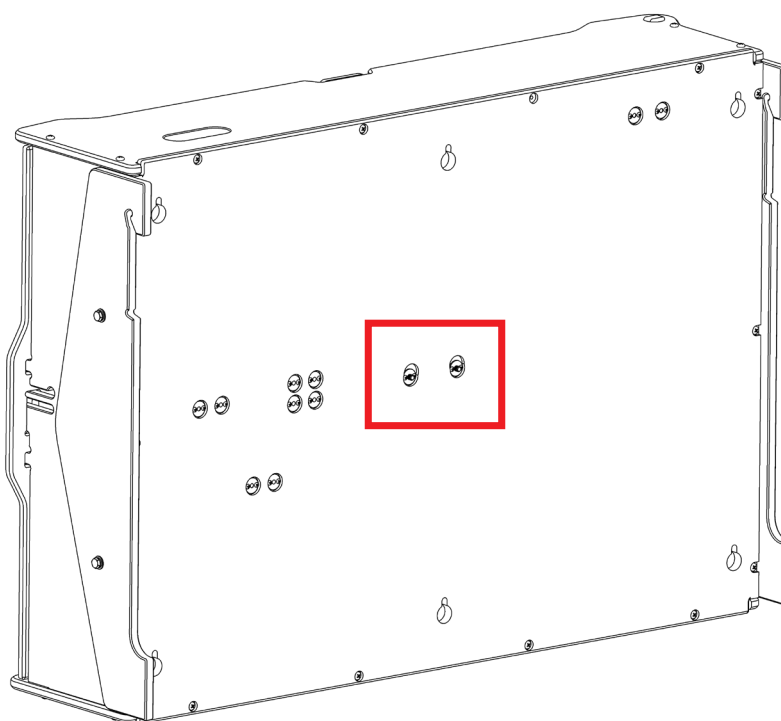


## Installing Pumps

### Industrial Plumbing Kit with MixRite 3.5

Due to their dimensional differences, Demo® MixRite 3.5 dosing pumps will require additional installation procedures to be properly mounted. Plastic spacers have been included with the cabinet to allow for this.

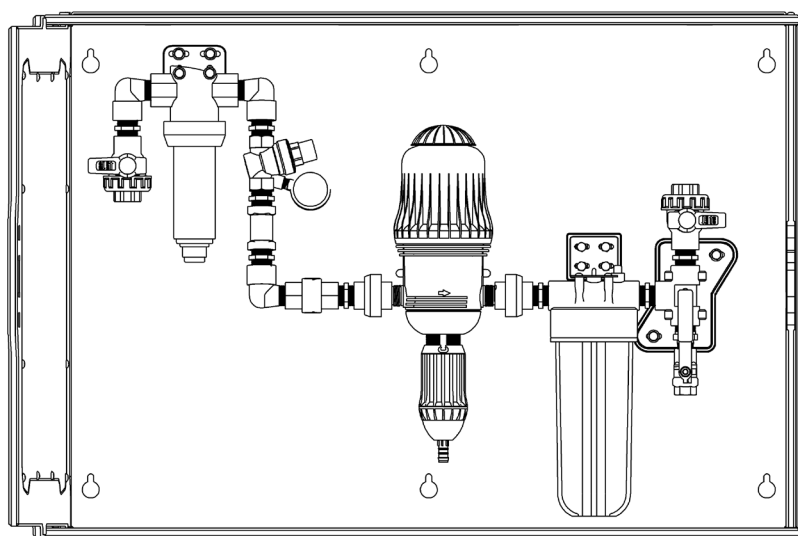
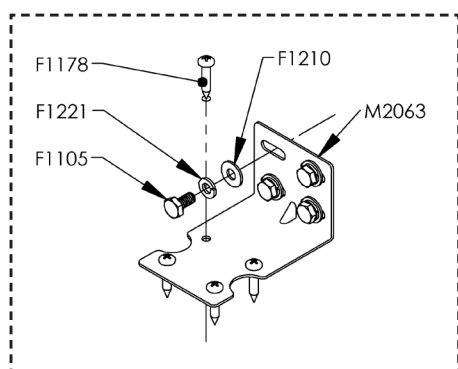
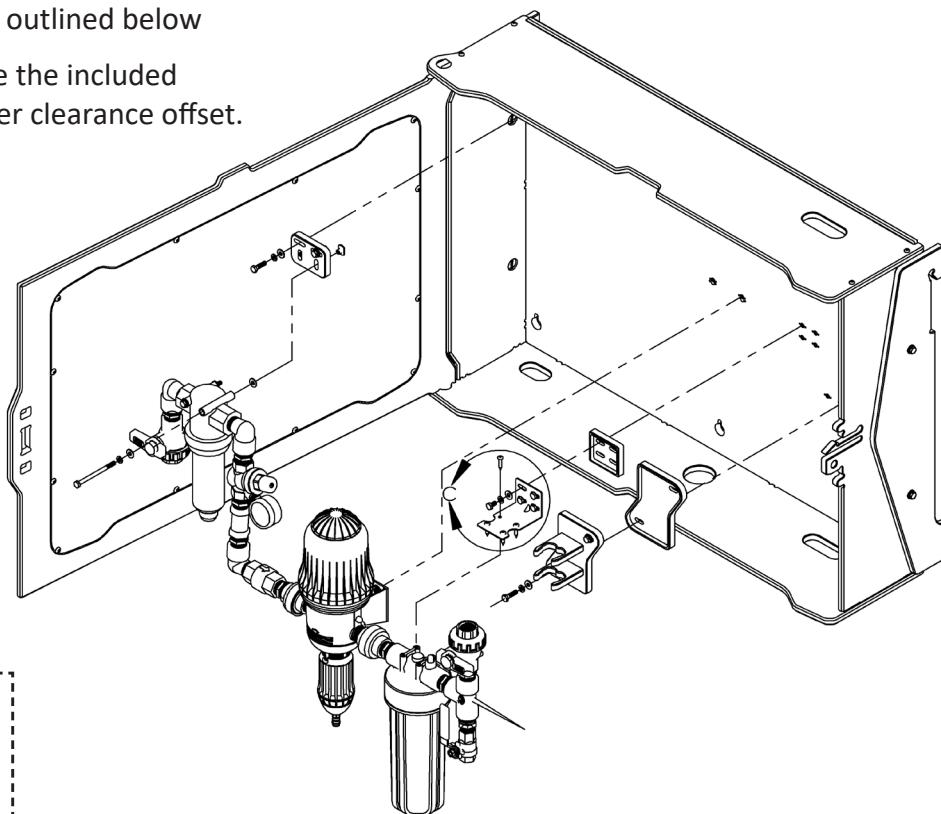
1. Remove 2x t-nuts from the back of the cabinet and re-install in lower, secondary holes as shown below.



## Installing Pumps (cont.)

### Industrial Plumbing Kit with MixRite 3.5 (cont.)

2. Remove pipe-tee clip and install spacer adapter as shown.
3. Install plumbing configuration as outlined below
4. If mixing chamber is included use the included spacer adapter to maintain proper clearance offset.



## *Maintenance*

- Check the enclosure for leaks and/or liquid accumulation.
- Check and adjust plumbing as necessary to prevent and protect against leaks, spills and other plumbing issues.
- Ensure door is latched closed at all times while pump is active.
- Check enclosure and pump mounting plate for cracks or damage.



## WARNING:

Ensure pump is inactive and depressurized before servicing to avoid injury.

Notes:

[illegible]

## More Information

Please contact Clean Logix at:

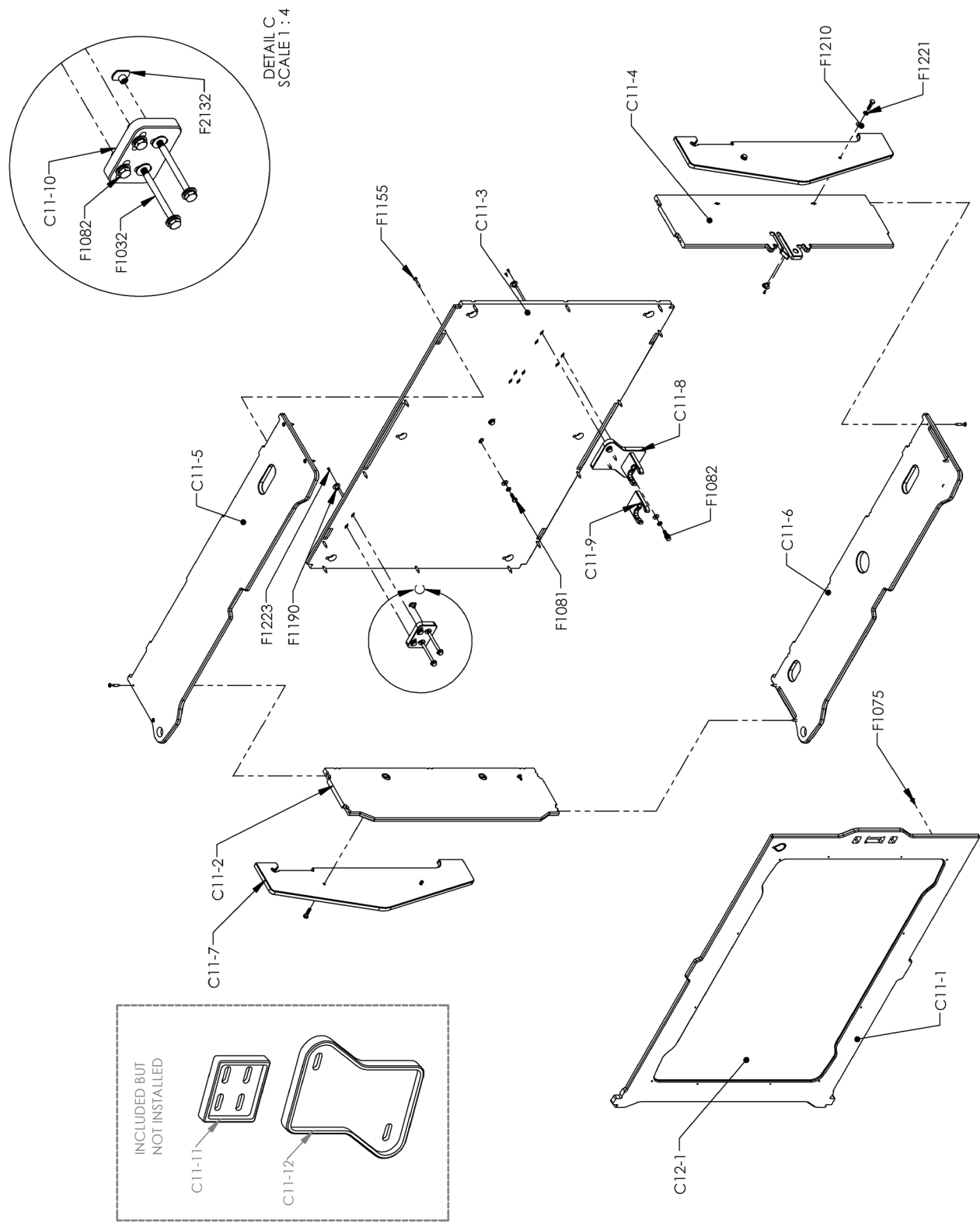
**(616)-438-9200 or [sales@clean-logix.com](mailto:sales@clean-logix.com)**

USER MANUAL: PBX-CAB-DOS

READ ALL INSTRUCTIONS BEFORE OPERATING EQUIPMENT



Parts Callout

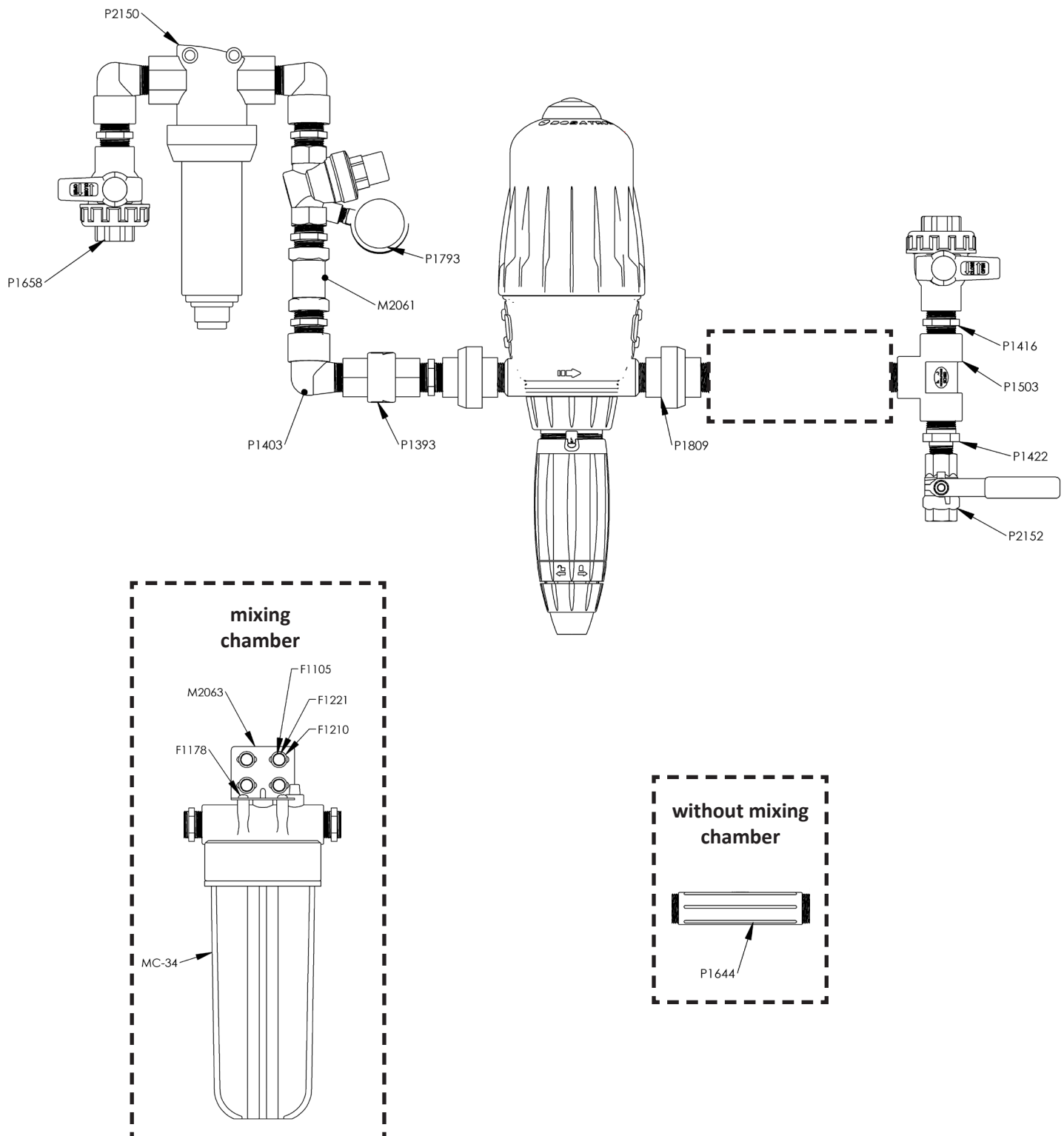


# USER MANUAL: PBX-CAB-DOS

READ ALL INSTRUCTIONS BEFORE OPERATING EQUIPMENT



## Parts Callout



# USER MANUAL: PBX-CAB-DOS

READ ALL INSTRUCTIONS BEFORE OPERATING EQUIPMENT



## Parts Callout

Part	Description
C11-1	DOSING CABINET DOOR
C11-10	DOSING CABINET FILTER SPACER
C11-11	DOSING PANEL MIXRITE SPACER MIXING CHAMBER BRACKET
C11-12	DOSING PANEL MIXRITE SPACER PIPE TEE CLIP
C11-2	DOSING LEFT SIDE PLATE
C11-3	DOSING CABINET BACK PLATE
C11-4	DOSING CABINET RIGHT SIDE PLATE
C11-5	DOSING CABINET TOP PLATE
C11-6	DOSING CABINET BOTTOM PLATE
C11-7	DOSING CABINET RAIL SUPPORT
C11-8	DOSING PANEL PIPE TEE .75 CLIP SPACER
C11-9	DOSING PANEL PIPE TEE .75 CLIP
C12-1	DOSING CABINET WINDOW
F1032	BOLT HHC 1/4-20 x 3-1/2 SS
F1075	SCREW SELF TAP 10-16 x 1/2 SS TRUSS HD
F1081	BOLT HHC 1/4-20 x 3/4 SS
F1082	BOLT HHC 1/4-20 x 1 SS
F1155	SCREW SHARX 10 X 1-1/4 PAN HD 316SS
F1178	SCREW SHARX 10 X 1 PAN HD 316SS
F1190	NUT BRAD TEE 1/4-20 SS

Part	Description
F1210	WASHER 1/4 316SS
F1221	WASHER SPLIT LOCK 1/4 316SS
F1223	SCREW SELF TAP #4 X 3/8 316SS
F1232	NUT WELD 1/4-20 x 5/16 NARROW-BASE 18-8 SS
M2061	FLOW RESTRICTOR, 3/4" NPT F-F, PP, 14GPM
MC-34	MIXING CHAMBER
P1393	CHECK VALVE 3/4" F X 3/4" F 0.3# HASTELLOY/VITON
P1403	PIPE ELBOW STREET 3/4" PP
P1416	PIPE HEX NIPPLE 3/4 POLY
P1422	PIPE REDUCER NIPPLE 3/4 x 1/2 POLY
P1503	PIPE TEE 3/4 POLY
P1644	PIPE NIPPLE 3/4 X 6 POLY
P1658	VALVE, BALL, MANUAL, 3/4" NPT F-F, PP
P1793	PRESSURE REGULATOR, WATER, 3/4" SS
P1809	PIPE UNION 3/4 INCH GRAY PVC
P2150	FILTER WATER 200-MICRON .75 PP, WITH MOUNTING HOLES
P2152	VALVE, BALL, MANUAL, 1/2" FNPT, SS, STRAIGHT HANDLE



### More Information

Please contact Clean Logix at:

**(616)-438-9200** or **sales@clean-logix.com**