



**CAUTION!** Always use care and wear appropriate PPE when working with chemicals!

## 1 Wiring

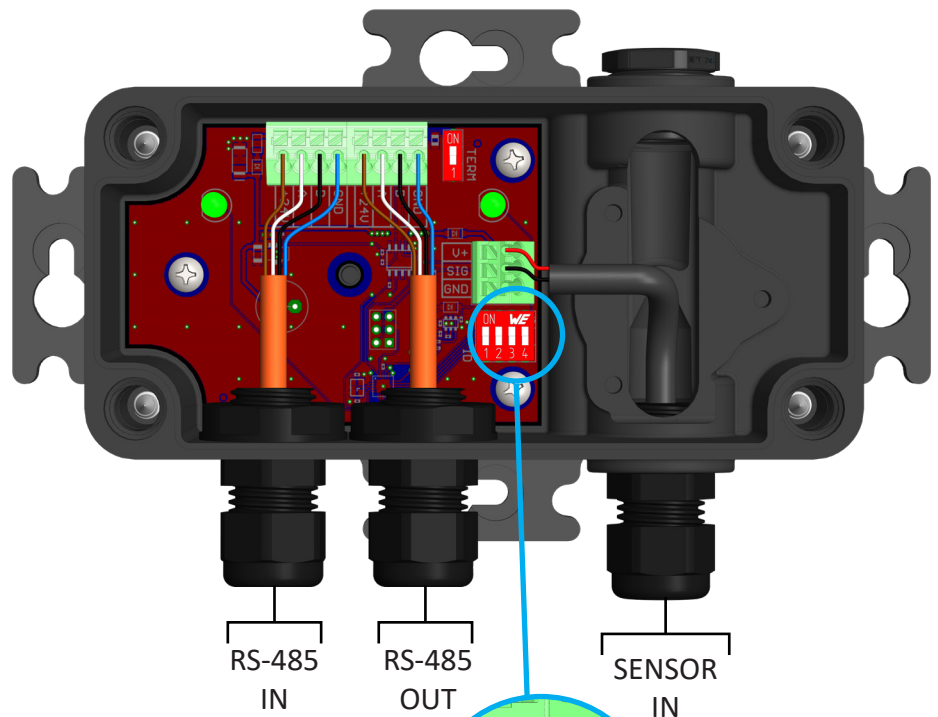
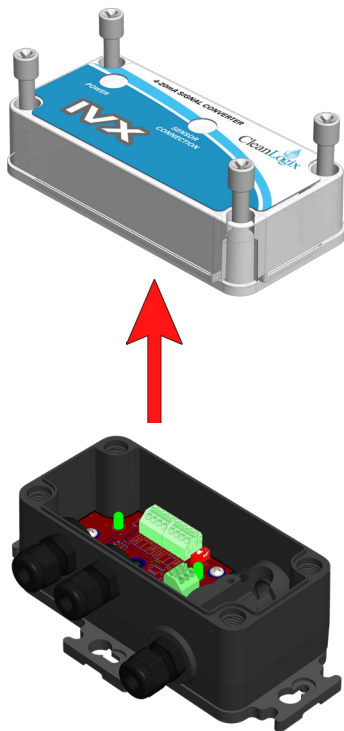
- Unscrew and remove cover.
- Route RS-485 and Sensor 4-20mA cables through the cord grip ports. (+/- .105-.315 OD)
- Strip wires and connect to spring terminals. (Terminals accept 20-16 AWG wire)

### RS-485 Connection (if not pre-installed):

- GND** = Ground
- A** = R-
- B** = R+
- +24V** = 24V DC

### Sensor Connection:

- V+** = Sensor Power
- SIG** = 4-20mA Sensor Input

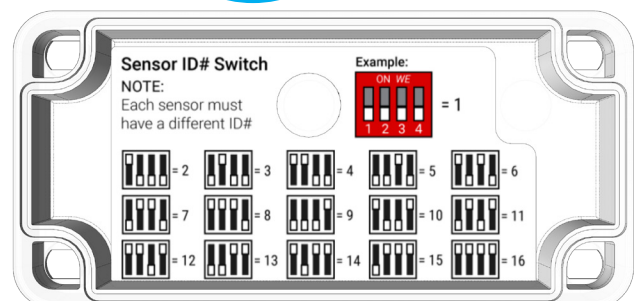


Sensor ID shown in Default position (Sensor ID#1)

## 2 Set Sensor ID#

- Using the DIP Switch on the board, set the Sensor ID# for configuration purposes.

**NOTE:** Sensors configured to the same IVX Controller *MUST* have a unique sensor ID#. Switches can be customized for up to 16 combinations.



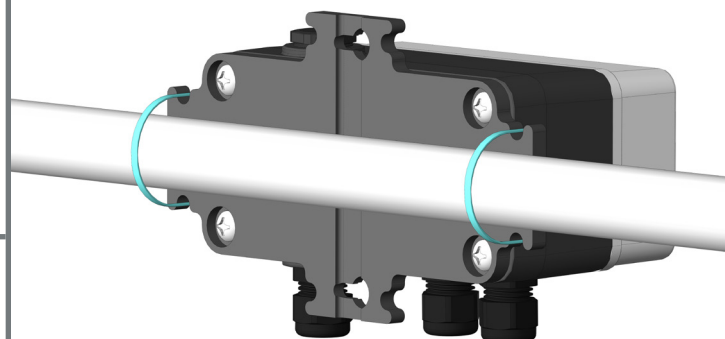
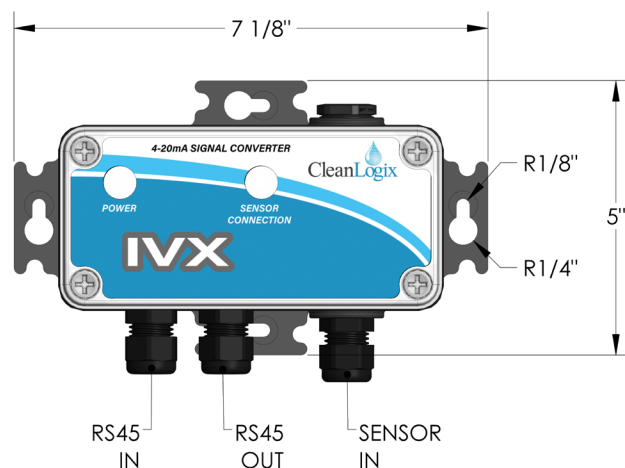
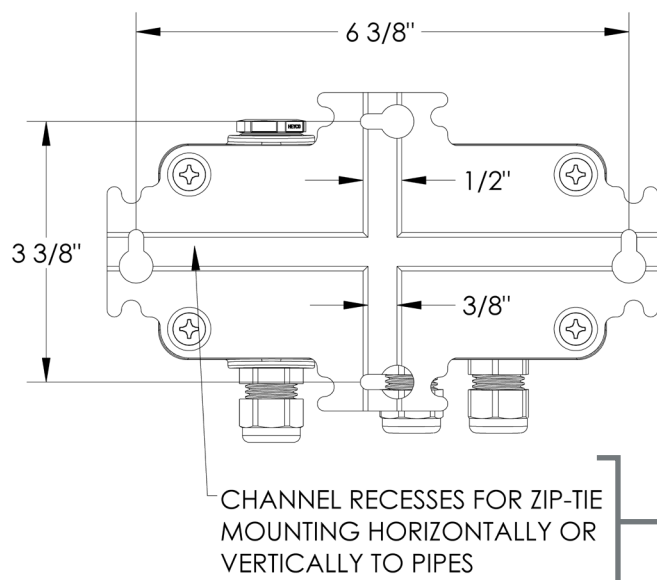


**CAUTION!** Always use care and wear appropriate PPE when working with chemicals!

**3**

## Mounting

- A. Select a mounting location, with consideration of the following:
  - Visibility of status lights
  - Distance from container entry point and sensor cable length
  - Distance from IVX controller for RS-485 cord length
- B. Using the attached mounting plate mount the device to a flat surface (hardware not included) or zip-tied to a stable pipe.



## More Information

Please reference the User Manual provided with product or contact Clean Logix at:  
**(616)-438-9200** - or - **sales@clean-logix.com**