



**CAUTION!** Always use care and wear appropriate PPE when working with chemicals!

## 1 Install Tower

- A. Place unit
- B. Attach to wall or rack if applicable

## 2 Connect Compressed Air

- A. 10CFM @ 80psi minimum
- B. 100 psi maximum supply pressure
- C. Recommended Regulator Setting: **80 PSI**
- D. Connect compressed air to the 3/8" push-to-connect fittings

## 3 Connect Electrical

- A. 110 VAC, 5A, Single Phase, 60 Hz
- B. GFCI Outlet
- C. Surge suppression recommended
- D. Plug unit into a NEMA 5-15 outlet

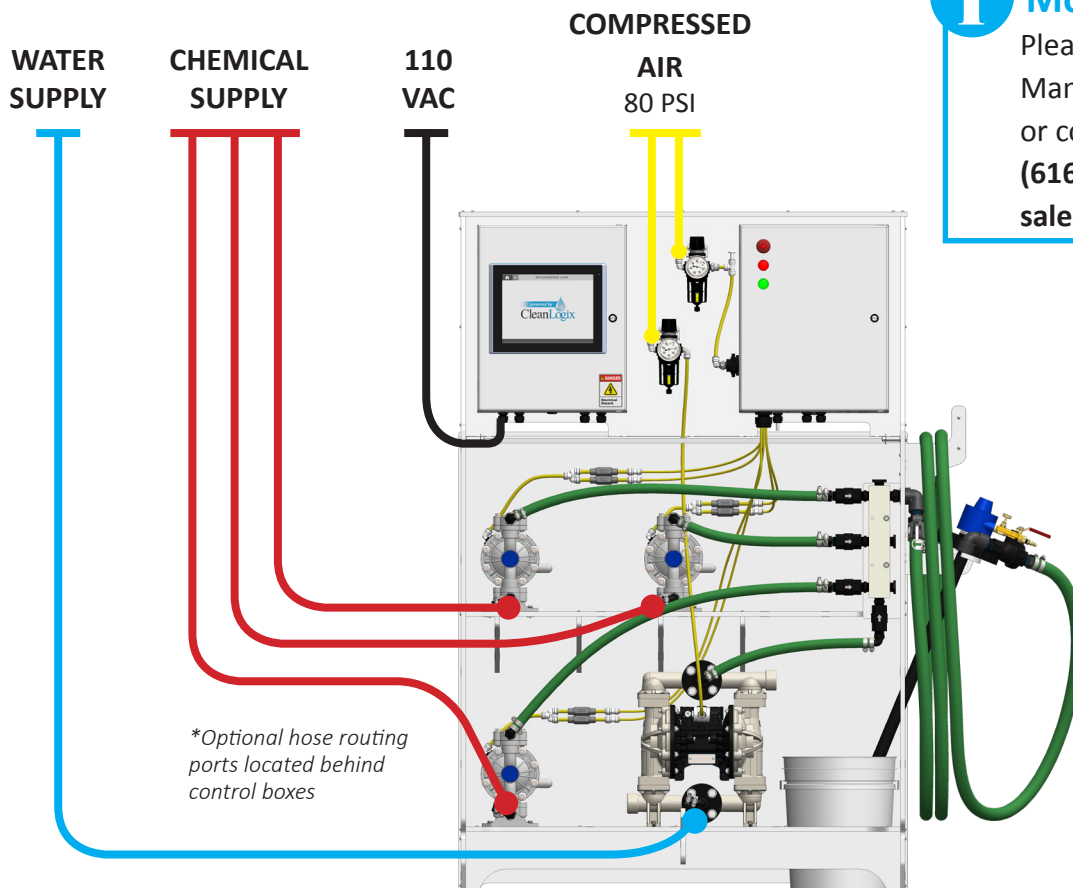
## 4 Plumb Chemical Pumps

- A. Connect chemical supply to 1/2" pumps. The supplied hose barbs are 3/4".
- B. Connect water supply to 1" pump.



## More Information

Please reference the User Manual provided with product or contact Clean Logix at:  
**(616)-438-9200**  
[sales@clean-logix.com](mailto:sales@clean-logix.com)





**CAUTION!** Always use care and wear appropriate PPE when working with chemicals!

## 1 Create Users

- Go to MAIN MENU > USER ACCOUNTS
- Add users and assign them to group levels for access permissions

## 2 Calibrate Scales

- Log in as administrator
- Go to TANK A > SCALE CALIBRATION screen
- Verify nothing is on the scale and SET ZERO
- Place item of known weight on scale
- Enter weight and SET SPAN to calibrate

## 3 Configure Chemicals

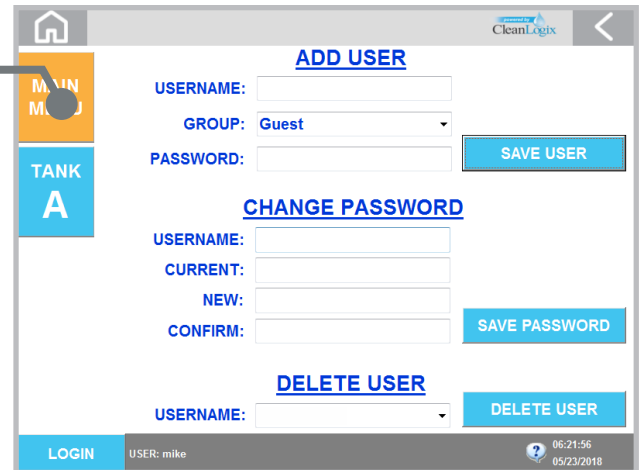
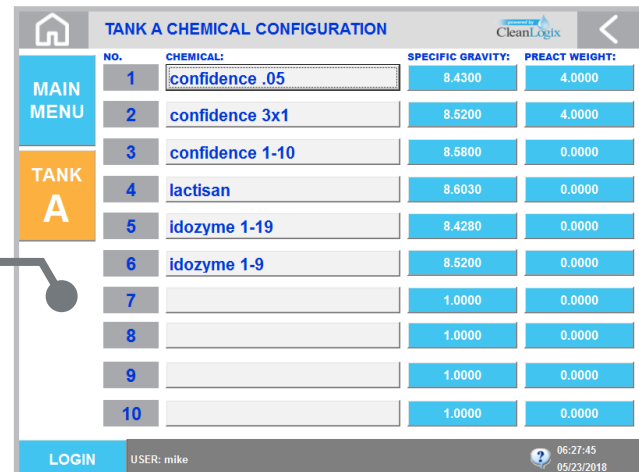
- Go to TANK A > CHEMICAL CONFIGURATION
- Enter name and specific gravity for each chemical output that will be used

## 4 Prime Pumps

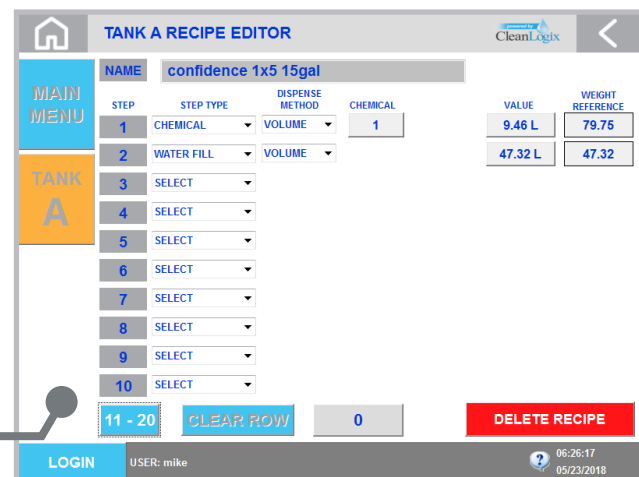
- Go to TANK A > MANUAL > CHEMICAL PUMPS
- Turn on pumps to prime by pressing MANUAL
- When primed, turn off the pump by pressing AUTO

## 5 Create Recipes

- Go to TANK A > RECIPE EDITOR
- Create recipes. Refer to user manual for more information

NO.	CHEMICAL	SPECIFIC GRAVITY	PNEUMATIC WEIGHT
1	confidence .05	8.4300	4.0000
2	confidence 3x1	8.5200	4.0000
3	confidence 1-10	8.5800	0.0000
4	lactisan	8.6030	0.0000
5	idozyme 1-19	8.4280	0.0000
6	idozyme 1-9	8.5200	0.0000
7		1.0000	0.0000
8		1.0000	0.0000
9		1.0000	0.0000
10		1.0000	0.0000



STEP	STEP TYPE	DISPENSE METHOD	CHEMICAL	VALUE	WEIGHT REFERENCE
1	CHEMICAL	VOLUME	1	9.46 L	79.75
2	WATER FILL	VOLUME		47.32 L	47.32
3	SELECT				
4	SELECT				
5	SELECT				
6	SELECT				
7	SELECT				
8	SELECT				
9	SELECT				
10	SELECT				



## More Information

Please reference the User Manual provided with product or contact Clean Logix at:

**(616)-438-9200 - or - sales@clean-logix.com**