



USER MANUAL

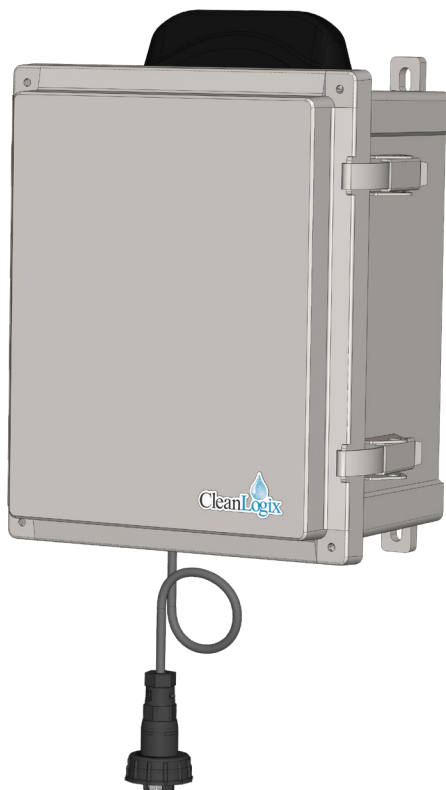
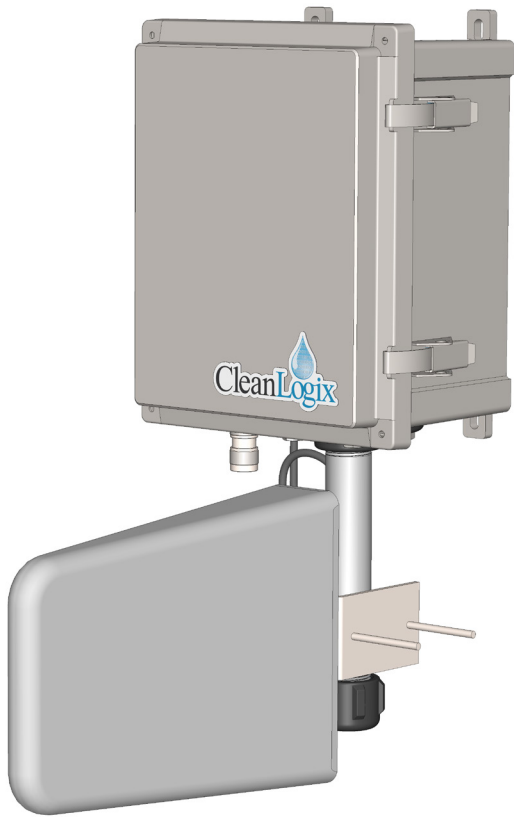
MODEL:

CELL

-115V / -POE / -POE-D

English (Original Instructions)

Updated: 03/24/21



USER MANUAL: CELL Modem

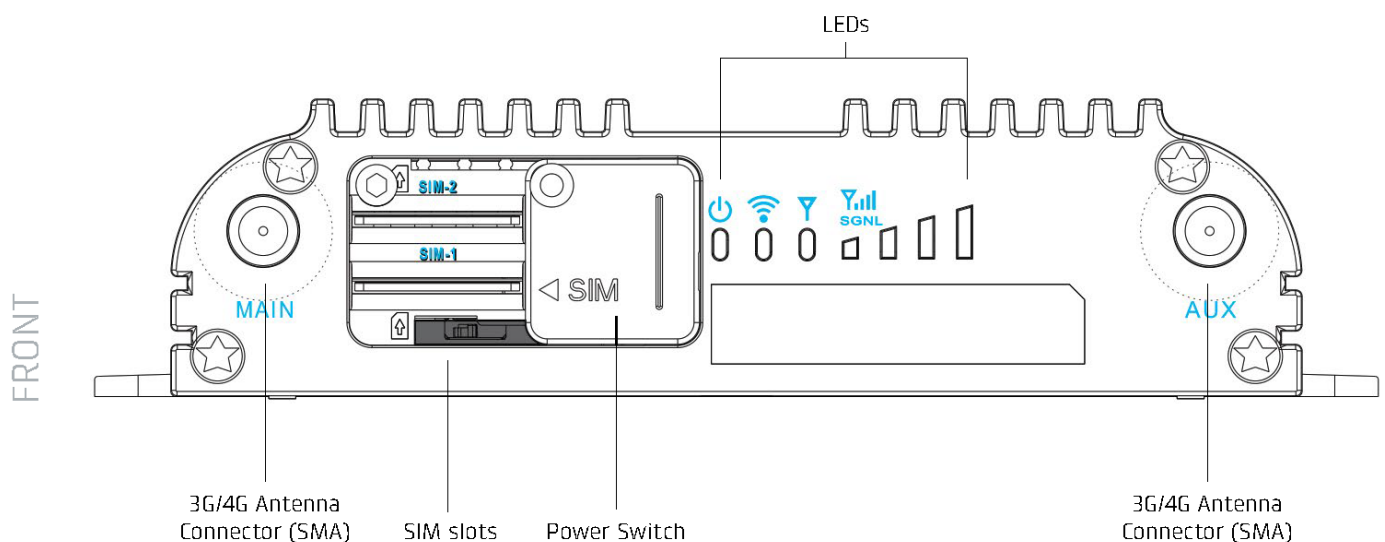
READ ALL INSTRUCTIONS BEFORE OPERATING EQUIPMENT



Table of Contents

General		Troubleshooting	06
<i>Overview</i>	03	Appendices	
<i>Specifications</i>	03	<i>Parts Callouts</i>	07
Installation			
<i>Mounting</i>	04		
<i>Connecting</i>	05		

Modem Overview:



USER MANUAL: CELL Modem

READ ALL INSTRUCTIONS BEFORE OPERATING EQUIPMENT



Overview

The CELL assemblies from Clean Logix coordinate with a variety of Clean Logix based equipment requiring internet access to connect to Clean Intel online series (i.e. ALX-PRO, IVX-BETA, etc.).

CELL models are available for 115V plug-in installations as well as power over ethernet (POE) with low profile or directional antenna configurations. To set-up, consult the included instructions for the model purchased and the system to be configured to.

NOTE: Consult the user manual(s) for the products to be connected to for additional support and configuration parameters.

Specifications

General:

- Dimensions: 12" x 10-1/4" x 7"
Directional Antenna: 21-3/8" x 10" x 15-5/8"
- Materials of construction: Fiberglass, stainless steel (hardware and latches), polypropylene (fittings)
- Cat6e cable provided for ethernet connection (50')

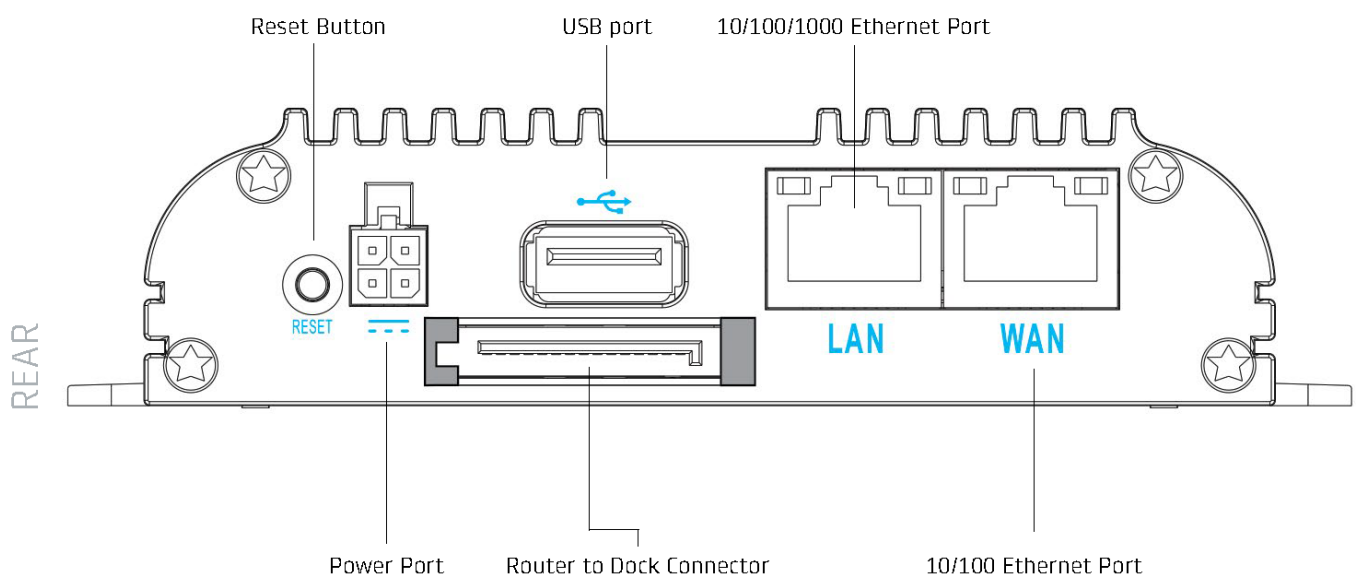
Electrical:

- 115VAC for CELL-115V models

Network:

- Integrated 4G LTE modem (with DC-HSPA+ failover)
- One 10/100/1000 Ethernet port (WAN or LAN), one 10/100 (WAN or LAN)

Modem Overview:



USER MANUAL: CELL Modem

READ ALL INSTRUCTIONS BEFORE OPERATING EQUIPMENT



Installation

Mounting:

1. Attach the mounting feet with the included hardware.
2. Choose an installation location with consideration of the following:
 - Cellular reception strength
 - Location for user/maintenance access
 - Distance from Controller

NOTE: Check internal lights for signal strength. Unit can be installed outdoors if necessary to increase reception signal.

3. Securely mount the CELL-POE using appropriate hardware (not included).

LED Lights:

	<ul style="list-style-type: none">• Blue: Powered On• No Light: Not receiving power
	<ul style="list-style-type: none">• Green: Active connection• Blinking Green: Connecting• Amber: Not active• Blinking Amber: Data connection error. No connection possible• Blinking Red: Resetting
	Signal Strength (Blue) <ul style="list-style-type: none">• 4 Solid Bars: Strongest signal• 1 Blinking Bar: Weakest signal (blinking = half bar)
Other	<ul style="list-style-type: none">• Several different LEDs blink when the factory reset button is detected.• Two of the modem LEDs blink red in unison for 10 seconds when there is an error during NCOS upgrade.• Has a dedicated Attention LED.• If a USB modem is plugged in, only Signal Strength LEDs will light up.

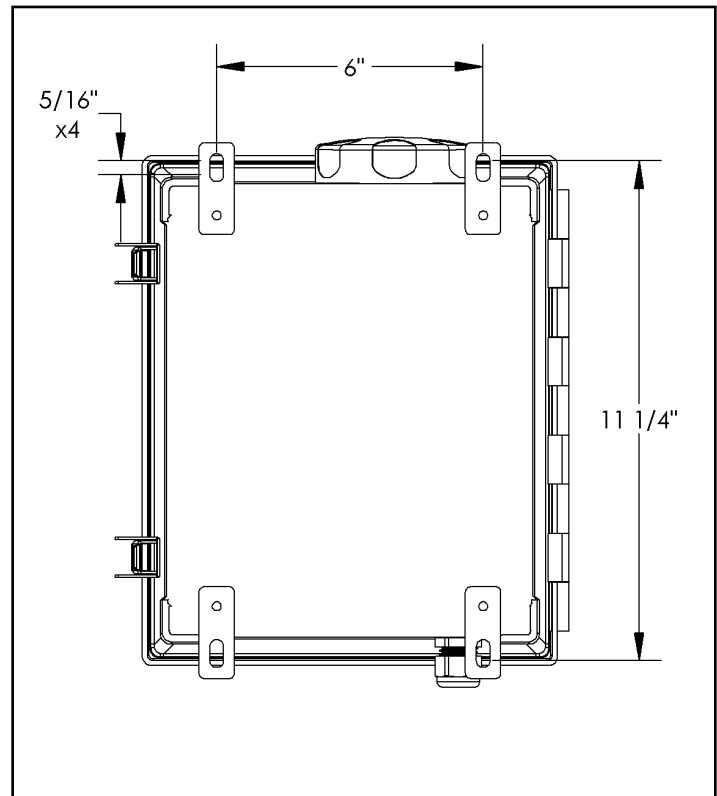


Figure 3.1: CELL-POE mounting hole dimensions

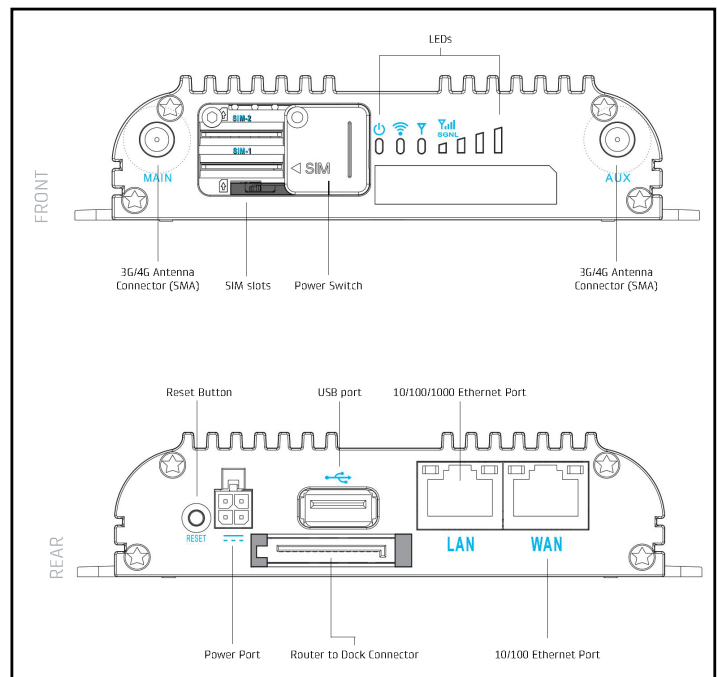


Figure 3.2: CELL modem details

Connecting

The CELL device will connect to its configured controller in two ways, depending on the model purchased:

CELL-115V:

1. Plug power cord into a 115 VAC, GFCI protected receptacle.
2. Connect to controller (IVX-BETA, ALX-PRO, etc.) using Cat6 Ethernet cable (50 ft. included with unit).
 - Open the CELL enclosure
 - Insert the ethernet cable through the open cord grip on the bottom of the enclosure
 - Plug the ethernet cable into the CELL modem's ethernet port
 - Tighten cord grip to secure cable



Figure 4.1: CELL-115V unit with low profile antenna

CELL-POE & CELL-POE-D:

1. Connect to controller (IVX-BETA, ALX-PRO, etc.) using Cat6 Ethernet cable via the sealed external ethernet port on the unit (50 ft. included with unit).

NOTE: Cat6e is recommended over Cat5e cables for increased network speed and less interference. If necessary, longer cables may be used.

NOTE: For CELL-POE-D - reposition antenna as necessary, by loosening the U-Bolt(s), to increase signal strength.

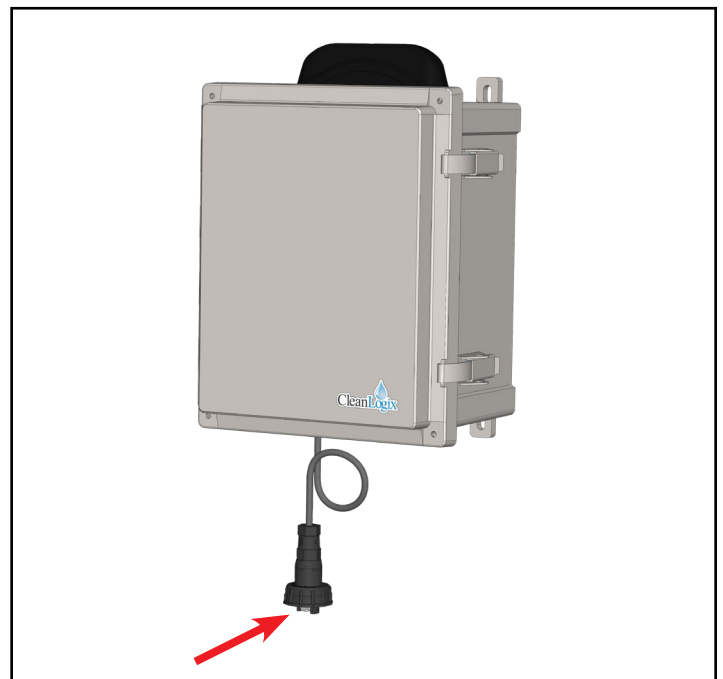


Figure 4.2: CELL-POE unit with low profile antenna ethernet connection

USER MANUAL: CELL Modem

READ ALL INSTRUCTIONS BEFORE OPERATING EQUIPMENT



Troubleshooting

Notes:

Unit is not receiving power:

- Ensure 115V unit is plugged into 115 VAC outlet that is receiving power.
- Check and confirm the power cord is not damaged and is connected.
- Verify Ethernet connection on POE models are secure and fully connected both internally and externally.

Modem is on but is not receiving cellular signal:

- Verify the location of the cell box is within Verizon cell coverage. If not, move location to an area with greater signal strength.
- Reset the unit if necessary to refresh connection

Unit is not providing network connection to Controller:

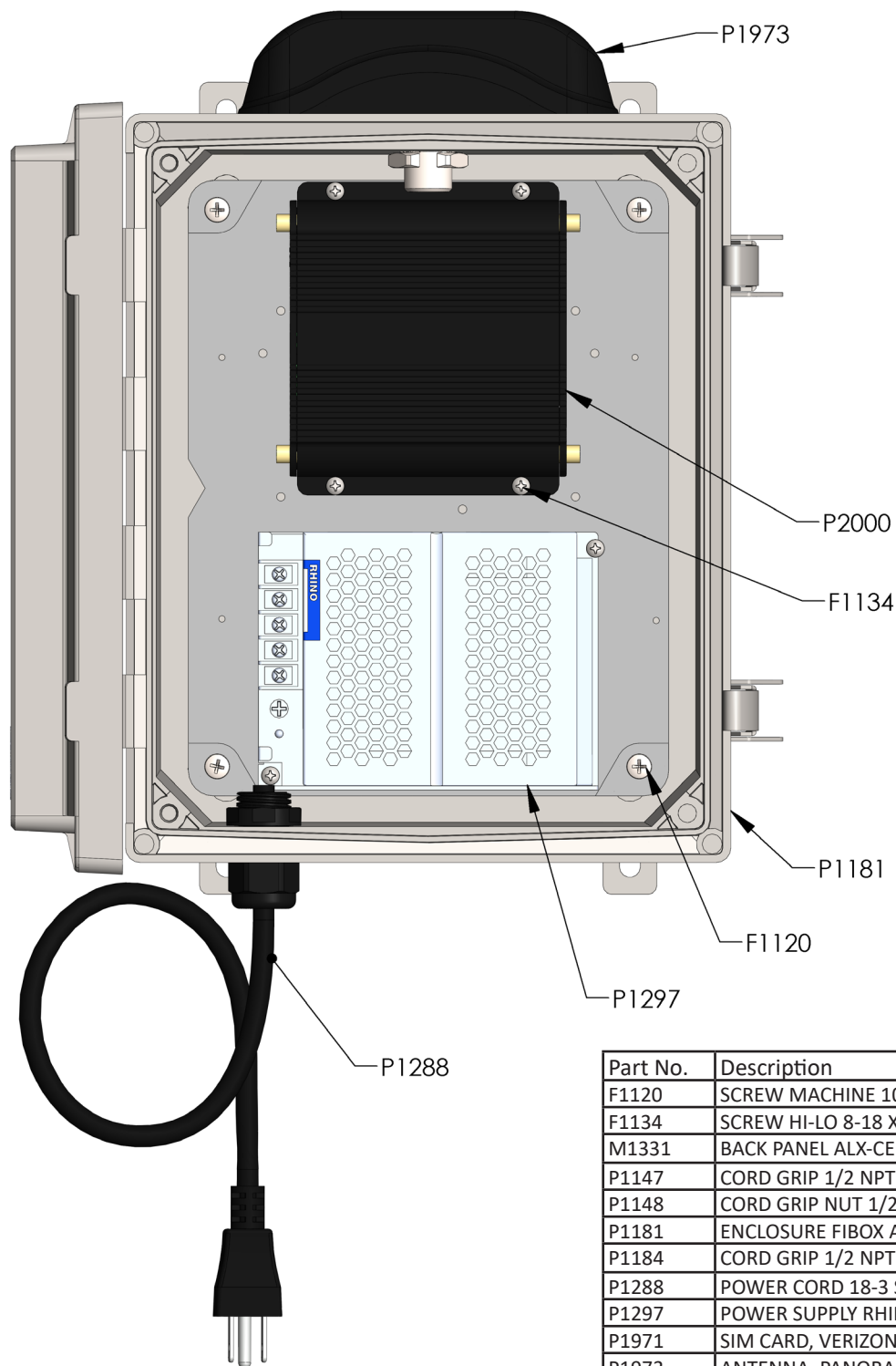
- Ensure the unit is properly plugged in and is receiving power
- Verify signal strength and cell connection
- Verify Ethernet cable connection at ports and along cable.
- Power down and restart both units to refresh the system.

USER MANUAL: CELL Modem

READ ALL INSTRUCTIONS BEFORE OPERATING EQUIPMENT



Appendix - CELL-115V Parts Callout



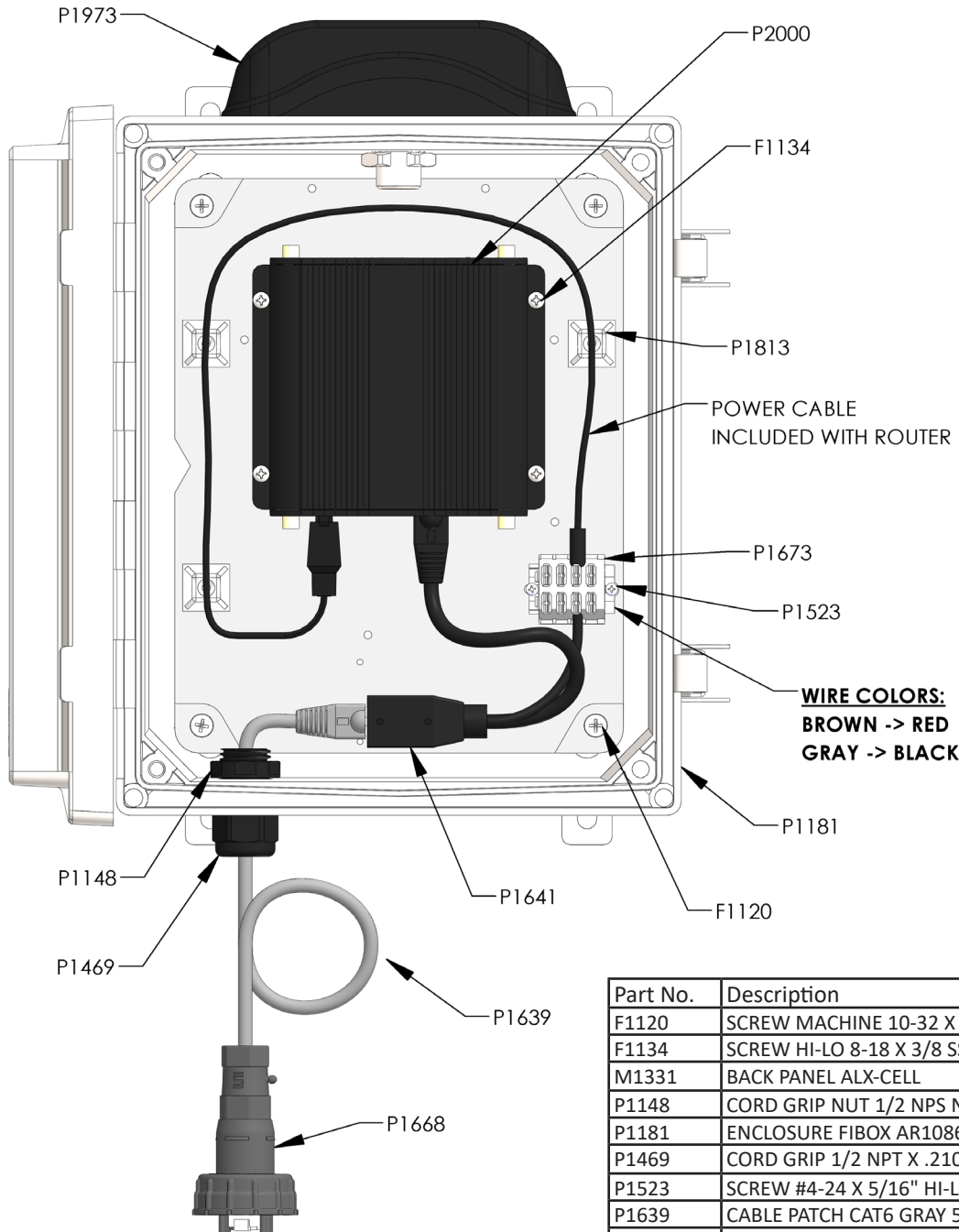
Part No.	Description
F1120	SCREW MACHINE 10-32 X 1/2 SS PHILLIPS PAN HD
F1134	SCREW HI-LO 8-18 X 3/8 SS
M1331	BACK PANEL ALX-CELL
P1147	CORD GRIP 1/2 NPT X .170 - .450 BLK
P1148	CORD GRIP NUT 1/2 NPS NYL
P1181	ENCLOSURE FIBOX AR1086CHSSL
P1184	CORD GRIP 1/2 NPT X .095-.260 BLK
P1288	POWER CORD 18-3 SO 5-15P
P1297	POWER SUPPLY RHINO PSS24-050
P1971	SIM CARD, VERIZON LTE, DIGITAL
P1973	ANTENNA, PANORAMA, LOW PROFILE LPAM, DBL Cell/LTE, DBL WIFI, 1m/3' SMA Threaded Bolt BLK
P2000	CELLULAR ROUTER

USER MANUAL: CELL Modem

READ ALL INSTRUCTIONS BEFORE OPERATING EQUIPMENT



Appendix - CELL-POE Parts Callout



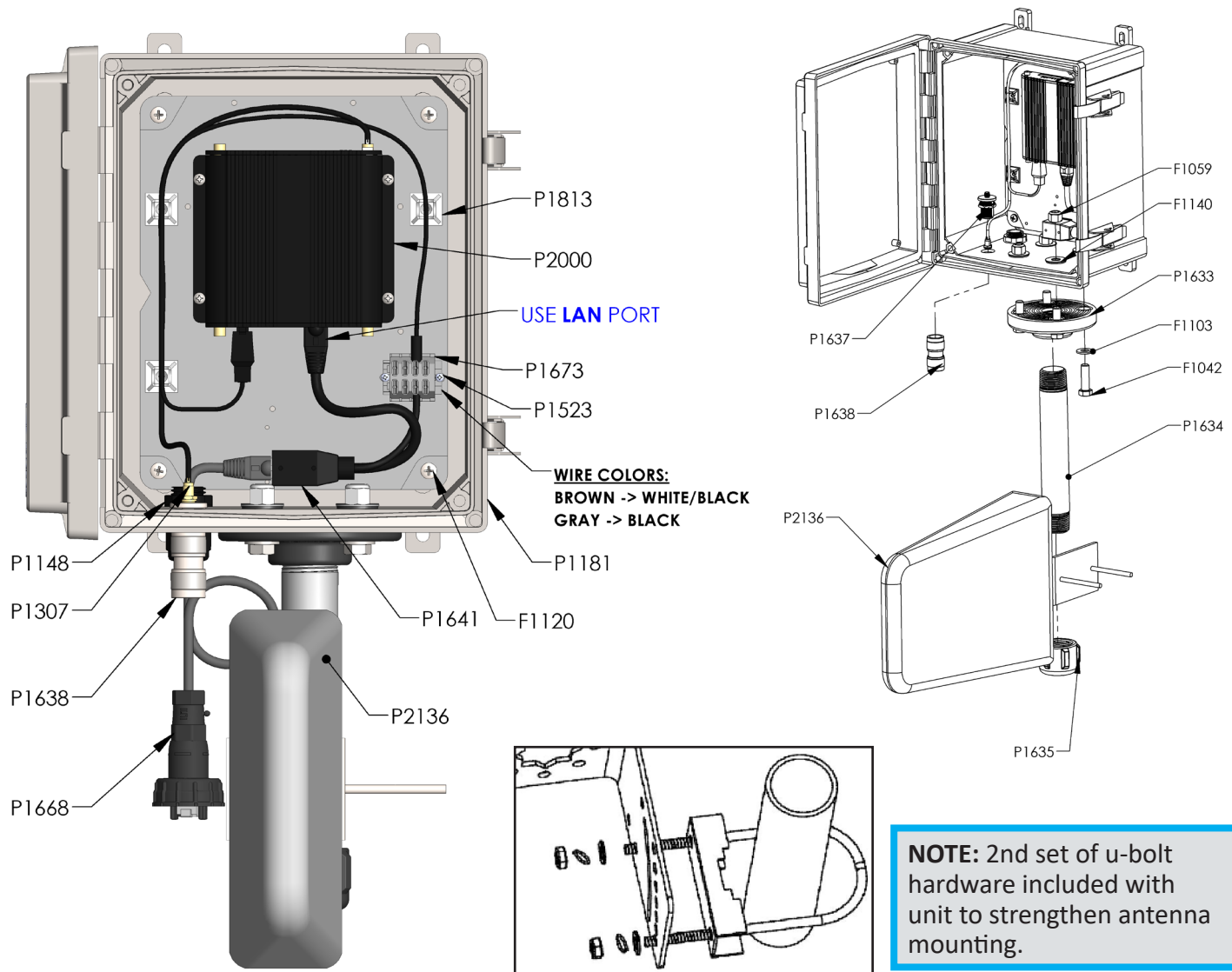
Part No.	Description
F1120	SCREW MACHINE 10-32 X 1/2 SS PHILLIPS PAN HD
F1134	SCREW HI-LO 8-18 X 3/8 SS
M1331	BACK PANEL ALX-CELL
P1148	CORD GRIP NUT 1/2 NPS NYL
P1181	ENCLOSURE FIBOX AR1086CHSSL
P1469	CORD GRIP 1/2 NPT X .210-.330 BLK SPLIT GLAND
P1523	SCREW #4-24 X 5/16" HI-LO PHILLIPS PAN ZN
P1639	CABLE PATCH CAT6 GRAY 50'
P1641	POE SPLITTER 5.5/2.1 mm DC SHIELDED
P1668	TERMINAL RJ45 FIELD WIRED CIRCULAR SEALED
P1673	TERMINAL BLOCK 4-POS 2 CONDUCTOR FLANGE MOUNT
P1813	CABLE TIE HOLDER
P1971	SIM CARD, VERIZON LTE, DIGITAL
P1973	ANTENNA, PANORAMA, LOW PROFILE LPAM, DBL Cell/LTE, DBL WIFI, 1m/3' SMA Threaded Bolt BLK
P2000	CELLULAR ROUTER

USER MANUAL: CELL Modem

READ ALL INSTRUCTIONS BEFORE OPERATING EQUIPMENT



Appendix - CELL-POE-D Parts Callout



Part No.	Description
F1059	NUT NYLOCK 3/8-16 SS
F1103	WASHER 3/8 SS (NOTE: ORDER IN MULTIPLES OF 50)
F1120	SCREW MACHINE 10-32 x 1/2 SS PHILLIPS
F1134	SCREW HI-LO 8-18 X 3/8 SS
F1140	WASHER SEALING 3/8" ID 1" OD SS
M1331	BACK PANEL CELL/BETA ENCLOSURE
M1888	DECAL CLEAN LOGIX LOGO 2.16 in. (h) x 4.5 in. (w) LAMINATED WHITE POLYESTER, PERMANENT ADHESIVE
P1148	CORD GRIP NUT 1/2" NPT BLACK - HEYCO 8463
P1181	ENCLOSURE FIBOX AR1086CHSSL
P1307	COAX CABLE SMA M/M RG174 12"
P1469	CORD GRIP 1/2 NPT X .210-.330 BLK SPLIT GLAND HEYCO M3200GBH
P1523	SCREW #4-24 X 5/16 HI-LO PHILLIPS PAN ZN

Part No.	Description
P1633	PIPE FLANGE 1" 4-BOLT POLYPRO
P1634	PIPE NIPPLE 1" X 8" 304SS
P1635	PIPE CAP 1" BLACK POLY
P1637	N FEMALE TO SMA FEMALE BULKHEAD ADAPTER
P1638	CONNECTOR ADAPTER PLUG-PLUG N 50-OHM
P1639	CABLE PATCH CAT6 GRAY 50'
P1641	POE SPLITTER 5.5/2.1 mm DC SHIELDED
P1668	SOCKET RJ45 FIELD WIRED SAMTEC SCPFE-17-G-01
P1673	TERMINAL BLOCK 4-POS 2 CONDUCTOR FLANGE MOUNT WAGO 261-104/341-000
P1813	CABLE TIE HOLDER
P1971	SIM CARD, VERIZON LTE, DIGITAL
P2000	CELLULAR ROUTER
P2136	ANTENNA, WIDE BAND (700 - 2700 MHz), N-FEMALE