



USER MANUAL

MODEL:

BLX-MR2-CC

MISTER 2 COMPLIANCE COUNTER

English (Original Instructions)

Updated: 02/11/21



USER MANUAL: BLX-MR2-CC

READ ALL INSTRUCTIONS BEFORE OPERATING EQUIPMENT



WARNING:

1. All personnel using this unit must be familiar with the information contained in this manual. Follow all installation and maintenance instructions.
2. Ensure solid footing and use both hands when operating the unit.
3. Avoid contact of chemicals with skin and eyes. If contact occurs, see MSDS sheet for further first aid measures.
4. Follow safety instructions of chemical manufacturer (MSDS).
5. Always follow plant and OSHA guidelines about the use of equipment.
6. Disconnect air before servicing equipment.
7. Always follow safety precautions and obey warning labels. Failure to do so could result in injury or death.

USER MANUAL: BLX-MR2-CC

READ ALL INSTRUCTIONS BEFORE OPERATING EQUIPMENT



Overview

The Compliance Counter add-on allows for automated tracking and activation verification for the MR2 footwear sanitizer system. The pneumatic, 4-digit counter records the number of successful activations performed by the Mister 2. The system includes a manual reset button and window shield to protect from spray/debris or tampering.

The accessory kit includes all components necessary to integrate into any existing unit.

Specifications

- Construction: 304 Stainless Steel, polycarbonate, polypropylene
- Weight: 2 lbs.
- Dimensions: 11.75" x 3.125" x 9.5"
298.45 x 79.375 x 241.3 mm
- Connection Size: 1/4" OD tubing or similar
(5 ft. included with unit)

Requirements

- Compressed Air: 30 PSI minimum*

***NOTE:** Minimum pressure output for pneumatic counter only. Consult User Manual included with MR2 sanitizing system for system requirements.

- Liquid Temperature Range: 40-100°F (4-37°C)
- Chemical compatibility: Chemical products used with this equipment must be formulated for this type of application and compatible with unit materials and seals.

NOTE: For more information on chemical compatibility consult the chemical manufacturer, SDS for your product, or contact our support department.

PROTECT THE ENVIRONMENT

Please dispose of packaging materials, old machine components, and hazardous fluids in an environmentally safe way according to local waste disposal regulations.



Always remember to recycle.

Specifications and parts are subject to change without notice.



More Information?

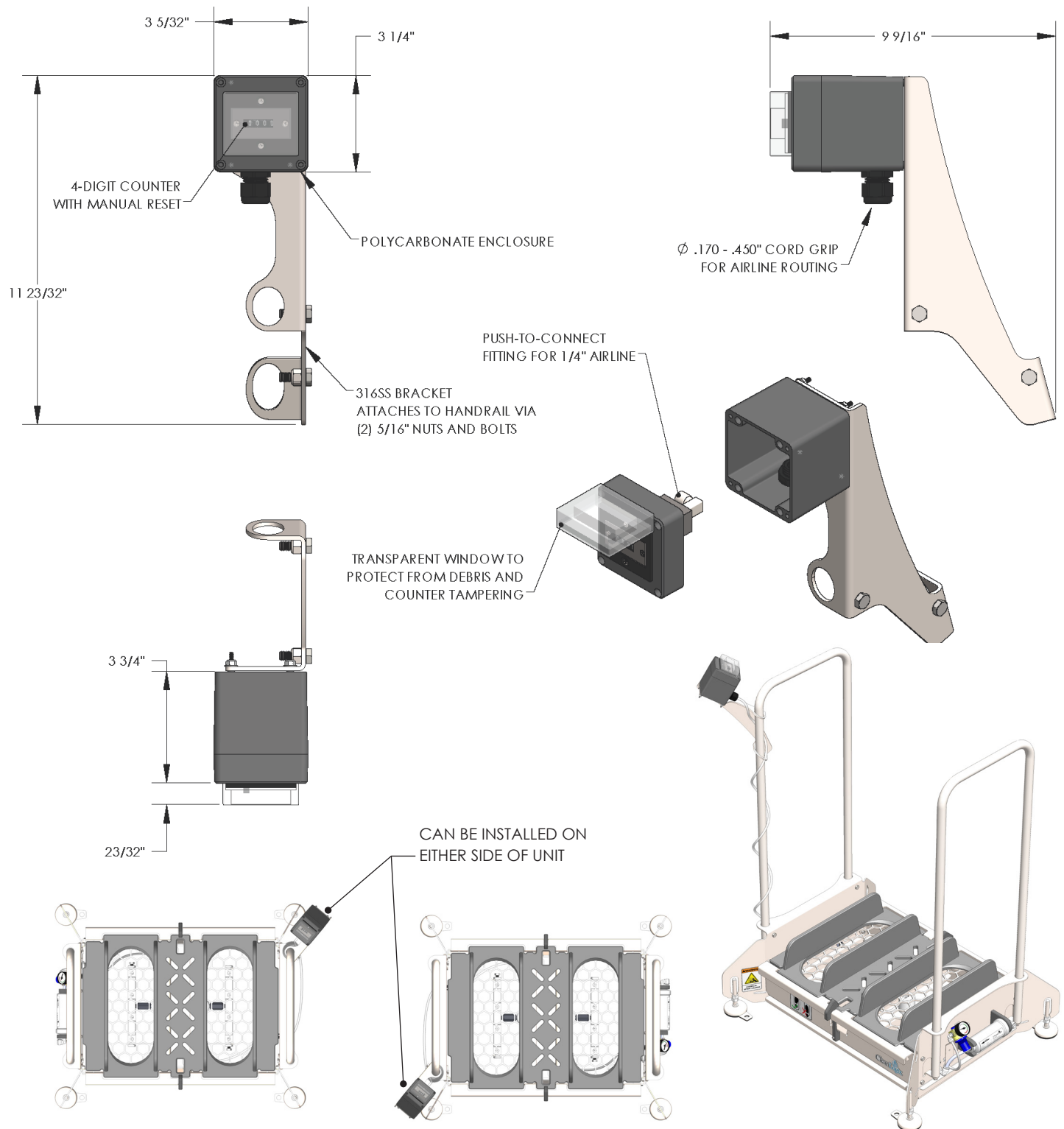
Please contact your equipment representative or manufacturer for further support.

USER MANUAL: BLX-MR2-CC

READ ALL INSTRUCTIONS BEFORE OPERATING EQUIPMENT



Installation



Installation (cont.)

Bracket Installation

1. Select a handrail/side of the unit to install the bracket. Consider traffic flow direction and accessibility.

NOTE: Compliance Counter can be mounted on either side of the unit. It is recommended to have the air regulator and solution filter installed on the opposing side for routing air and solution lines.

If necessary, the filter and air regulator can be removed and installed on the opposing side.

2. Remove the handrail and install the compliance counter bracket as shown in [Fig. 5.1]
3. Using a 1/2" socket/wrench, secure the bracket in place using the (2) included nuts and bolts.
4. Reattach the handrail and secure.

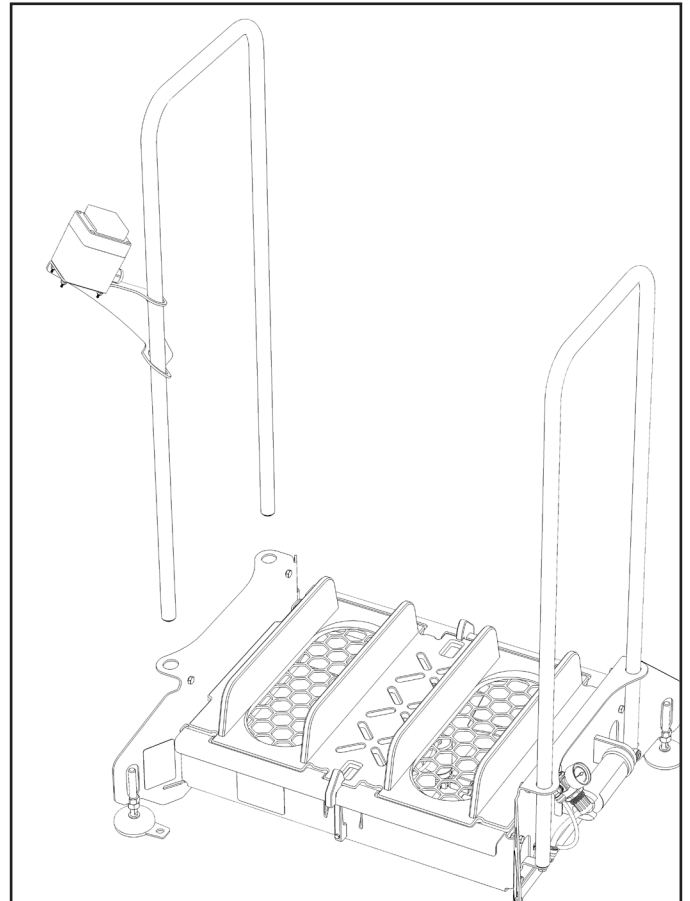


Fig. 5.1: Installing Compliance Counter bracket

Plumbing Installation

1. If connected, remove air and solutions lines and exhaust system of all compressed air.

NOTE: The plumbing system will need to be removed temporarily to integrate the compliance counter.

2. Connect the included 1/4" bulkhead fitting to the open port on the side of the sanitizing system [Fig. 5.2]
3. Remove the plastic base plate and hinge open each foot plate to expose the plumbing assembly.
4. Disconnect the plumbing assembly from the solution and airline bulk-heads and remove.
5. Flip the plumbing assembly over and locate the 1/4" airline leading from the valve to the single-shot air output inlets.

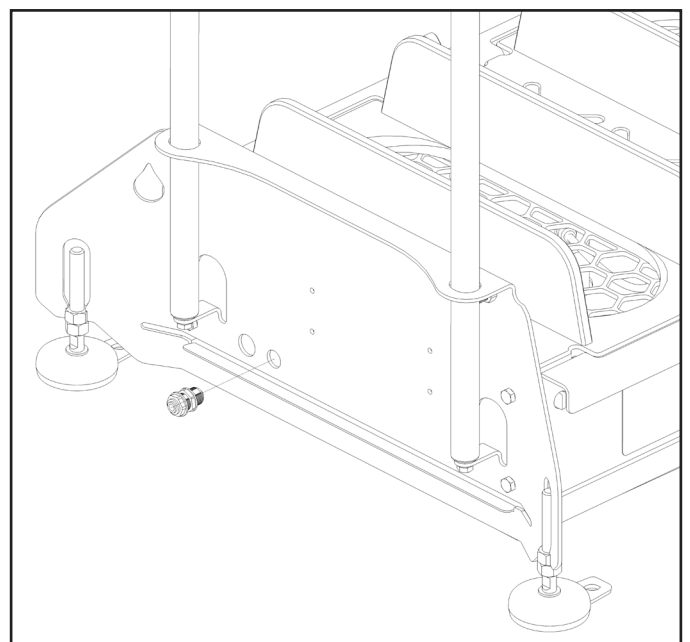


Fig. 5.2: 1/4" bulkhead for Compliance Counter airline

Installation (cont.)

Plumbing Installation (cont.)

6. Cut the 1/4" airline before the tee fitting, as indicated in [Fig. 6.1] .
7. Using the 1/4" tee fitting included with the compliance counter, tee into the cut airline and reconnect them.
8. Using the included 1/4" tubing, cut a new airline long enough to connect from the tee to the 1/4" bulkhead when the plumbing assembly is in place.

NOTE: Ensure the new airline is long enough to reach the bulkhead without kinking, but is not excessively long where it interferes with removing/replacing the catch pan.

9. Replace plumbing assembly when complete and reconnect all air and solution lines to their appropriate bulkheads.
10. Connect the remaining 1/4" from the Compliance Counter to the exterior side of the bulkhead to complete installation.

NOTE: It is recommended to route the airline around the handrail to prevent unintended interaction (tripping, snags, etc.)

11. Replace plastic base plate and reconnect air and solution supply to resume normal operations (see main user manual for priming instructions).

Operation and Use

1. Activate MR2 to trigger the counter (up to 9,999 activations can be recorded before requiring reset)
2. Open the window cover to access reset button to restart counter.

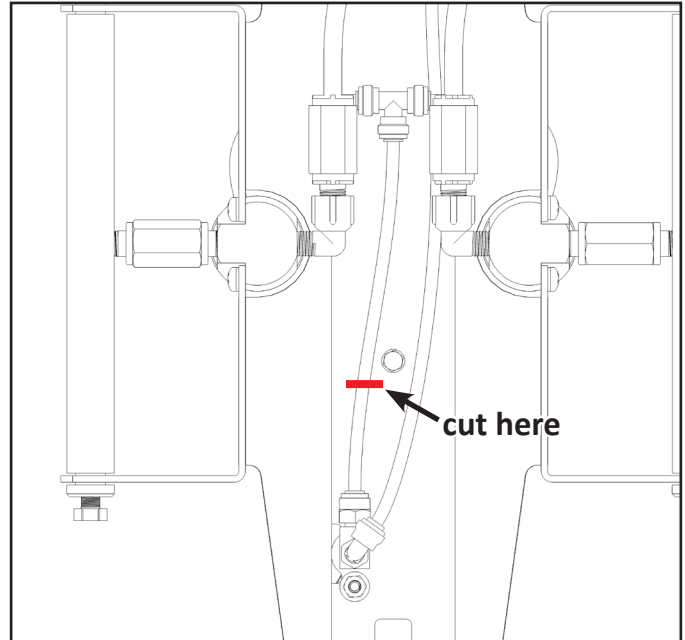


Fig. 6.1: Airline cut location for tee

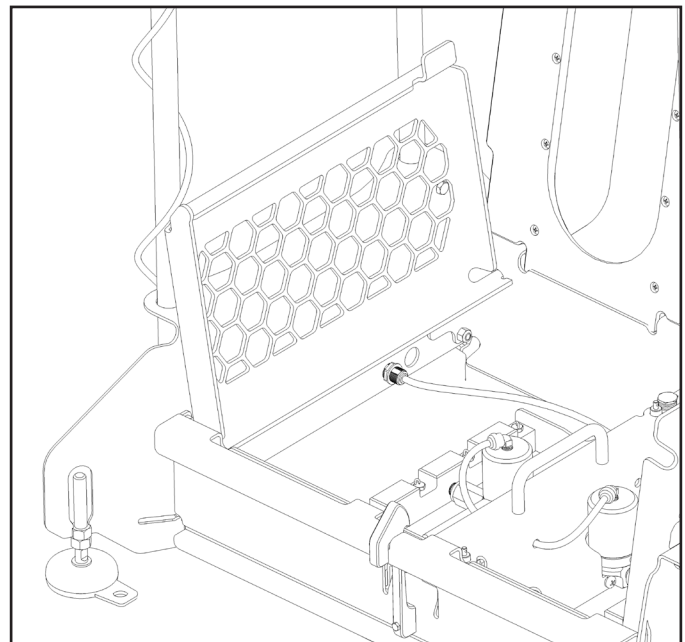


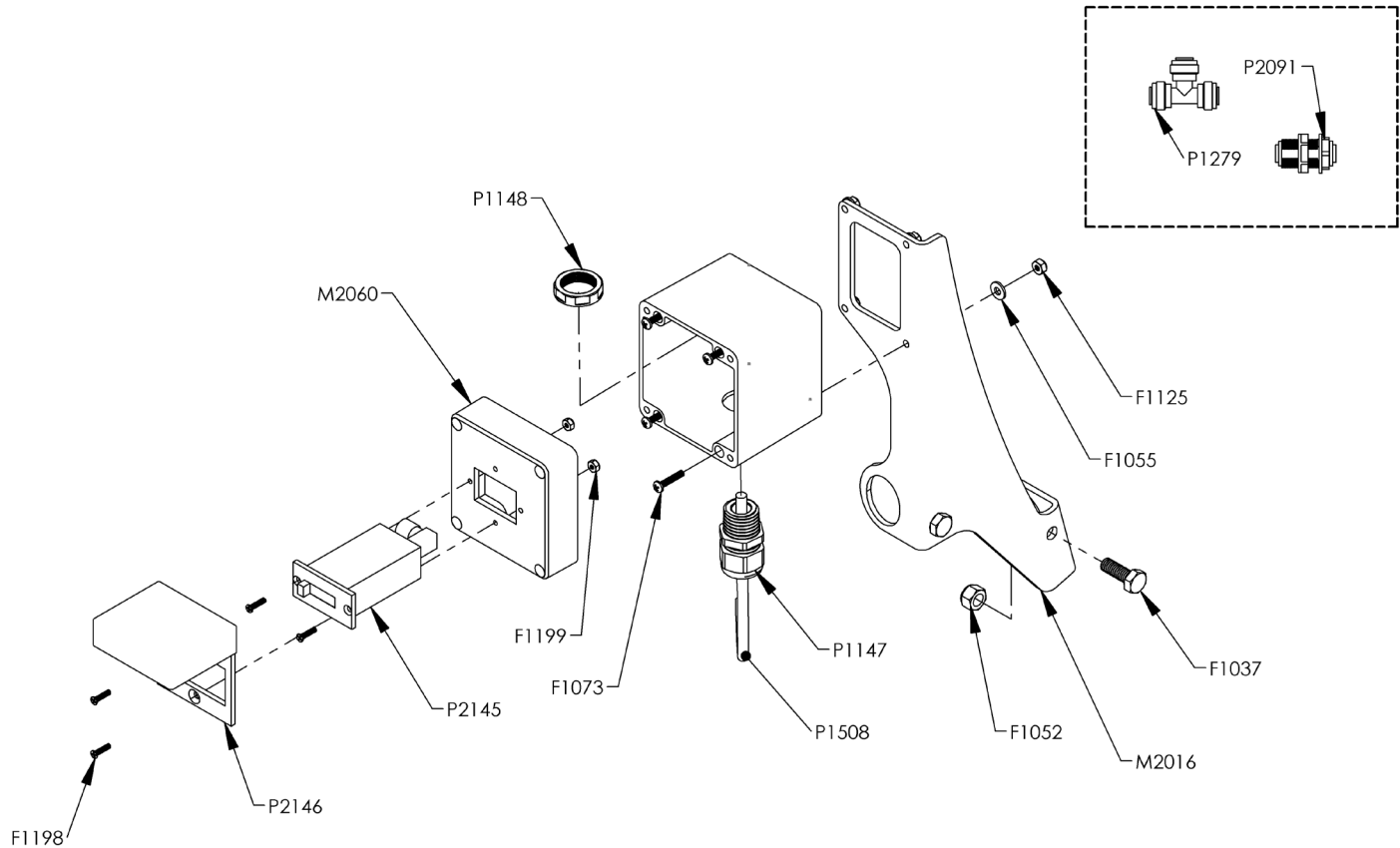
Fig. 6.2: Compliance Counter bulk-head connection

USER MANUAL: BLX-MR2-CC

READ ALL INSTRUCTIONS BEFORE OPERATING EQUIPMENT



Appendix A - Parts Callout



| Part No. | Description |
|----------|---|
| F1037 | BOLT HHC 5/16-18 x 7/8 SS |
| F1052 | NUT NYLOCK 5/16-18 SS |
| F1055 | WASHER #8 SS TYPE A |
| F1073 | SCREW MACHINE 6-32 x 3/4 SS PHILLIPS PAN HD |
| F1125 | NUT NYLOCK 6-32 SS |
| F1198 | SCREW MACHINE 4-40 X 1/2 FLAT HEAD PHILLIPS 316SS |
| F1199 | NUT NYLOCK 4-40 ZN |
| M2016 | BLX-MR2 COUNTER BRACKET |
| M2060 | ENCLOSURE PC 8X8X10 - CUSTOM MACHINED |
| P1147 | CORD GRIP 1/2 NPT X .170-.450 BLK |
| P1148 | CORD GRIP NUT 1/2" NPT BLACK |
| P1279 | QUICK FIT TEE 1/4" |
| P1508 | 1/4" OD POLYETHYLENE TUBING (sold by the foot) |
| P2091 | QUICK FIT BULKHEAD 1/4" |
| P2145 | TOTALIZER PNEUMATIC 4-DIGIT |
| P2146 | TOTALIZER WINDOW COVER |