



---

# USER MANUAL

---

MODEL:

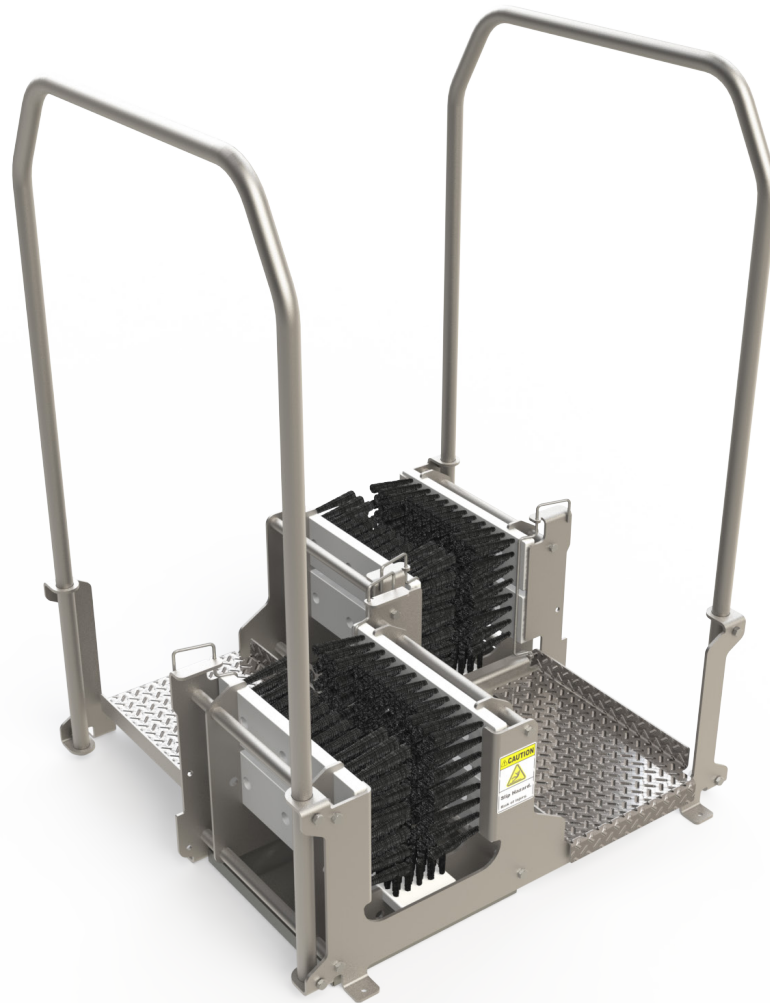
**BLX-200W**

**Dual Manual BootScrubber (Wet)**

---

*English (Original Instructions)*

*Updated: 09/13/24*



# USER MANUAL: BLX-200W

READ ALL INSTRUCTIONS BEFORE OPERATING EQUIPMENT



## Overview

The BLX-200W is an all manual, single footwear scrubbing unit. Designed and built as a solid member, open stainless steel frame with a solid hand rail for support. The BLX-200W features one removable sole brush and four removable vertical side brushes, each of which require no tools. Being a manual based, wet unit the BLX-200W requires no electrical and is pre-configured for easy plumbing of water and sanitizer.



## Specifications

- Frame - 304 Stainless Steel
- Length - 29 1/2 in.
- Width - 28 in.
- Height - 42 in.

## Water Requirements

- Cold Portable Water
- 35 PSI Minimum Pressure
- 100°F Max Temperature

### **CAUTION:**

1. Avoid contact of cleaning agent with skin and eyes. If contact occurs, see MSDS sheet for further first aid measures.
2. Follow safety instructions of chemical manufacturer (MSDS).
3. Always follow plant and OSHA guidelines about the use of hygiene equipment.
4. All personnel using this unit must be familiar with the information contained in this manual. Follow all installation and maintenance instructions.
5. Always wear appropriate footwear. Secure or remove loose items on footwear.
6. Ensure solid footing and use both hands when operating the unit.

**NOTE:** A back flow preventer must be installed in the water line for this unit. Check local codes to ensure proper installation

### **WARNING:**

DO NOT use flammable liquids (i.e. alcohol based solutions or similar) without dilution.



## Installation

### Installing and Mounting the Unit

1. Set unit in desired location.
2. Aspects to consider when deciding on placement:
  - Clearance for entering and exiting.
  - Traffic flow for unit operation.
  - Emergency exit paths or egress in case of emergency.
  - Head room for personnel while using the unit.
3. Once the unit is in the desired location, use a level to make sure the unit is stable and level in all directions [Figure 3.1]. Make sure the location is a flat surface.
4. Using the 4 mounting brackets located at each corner, securely fasten the unit to the floor with appropriate hardware for the given material (i.e. concrete anchors and bolts) as shown in [Figure 3.2]



### WARNING

If not properly secured to floor the unit may tip over and has the potential to cause personal injury.

5. Dosing of sanitizing chemicals into water supply can be accomplished via the included venturi injector.

**NOTE:** The unit is compatible with most common sanitizers. For further plumbing recommendations please contact Clean Logix.

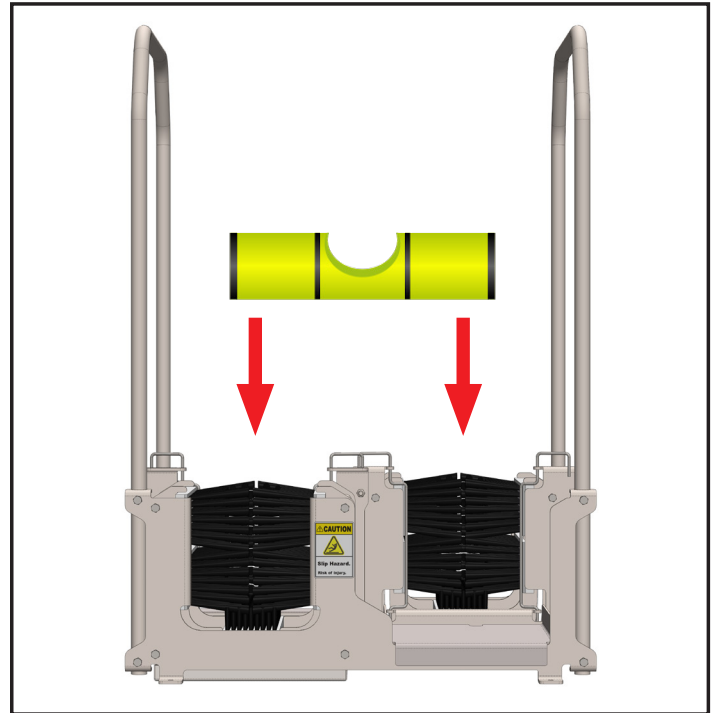


Fig. 3.1: Verify level of bootscrubber at each end

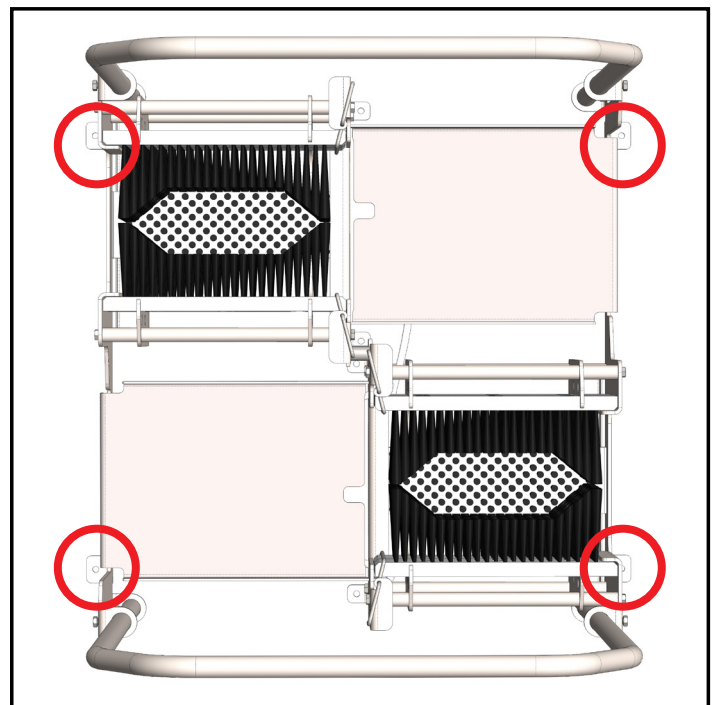


Fig. 3.2: Mounting bracket locations

## Installation (continued)

### Installing Handrail

Due to the shipment size, the BLX-200 will arrive with the handrail disconnected.

1. Place handrail through the mounting brackets on each side of the unit [Figure 4.1].
2. Using two 1/2" wrenches tighten the bolt through the locknut until the bolt bottoms out against the handrail to secure in place [Figure 4.2].
3. Repeat for remaining bolts to secure the handrail (8 bolts total).

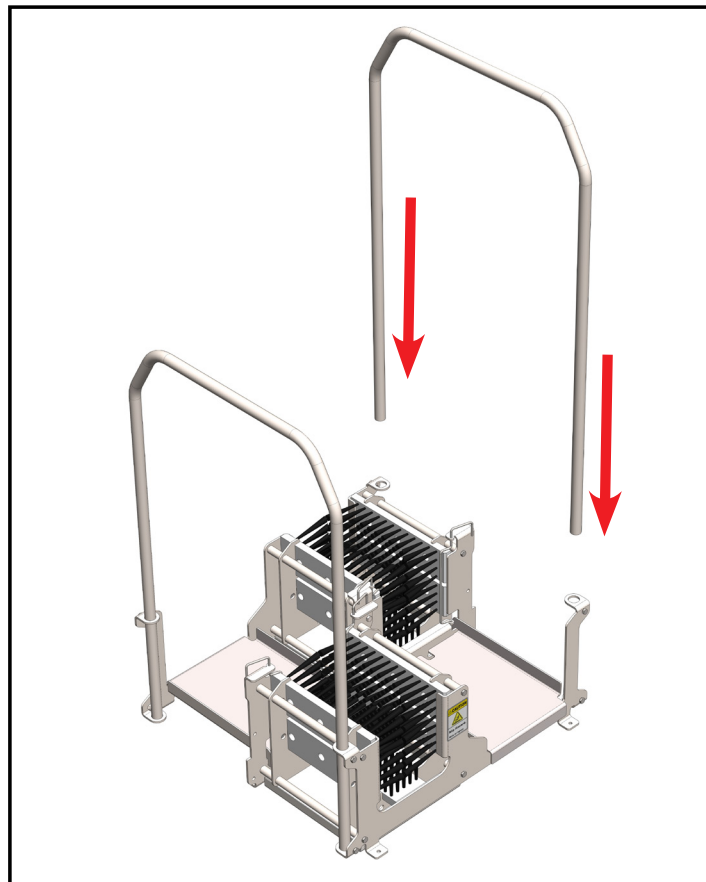


Fig. 4.1: Installing Handrail

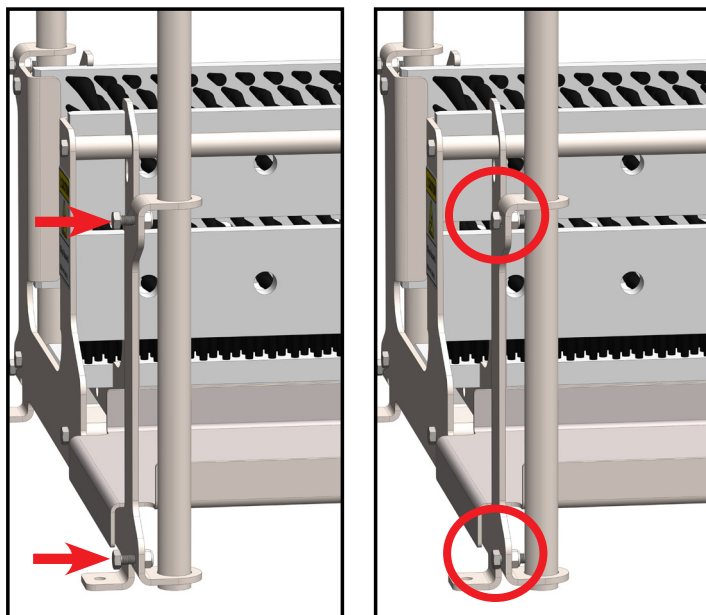


Fig. 4.2: Handrail stabilization bolts

## Installation (continued)

### Installing Foot Plate

1. Place the Foot Plates at the opening of each end of the unit.
2. Make sure the notches on the plate line up with the holes on the unit, as shown in [Figure 5.1].

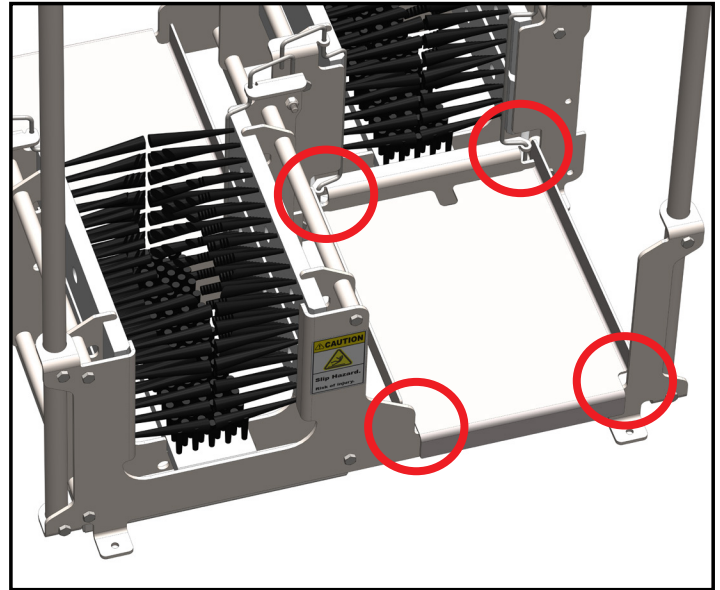
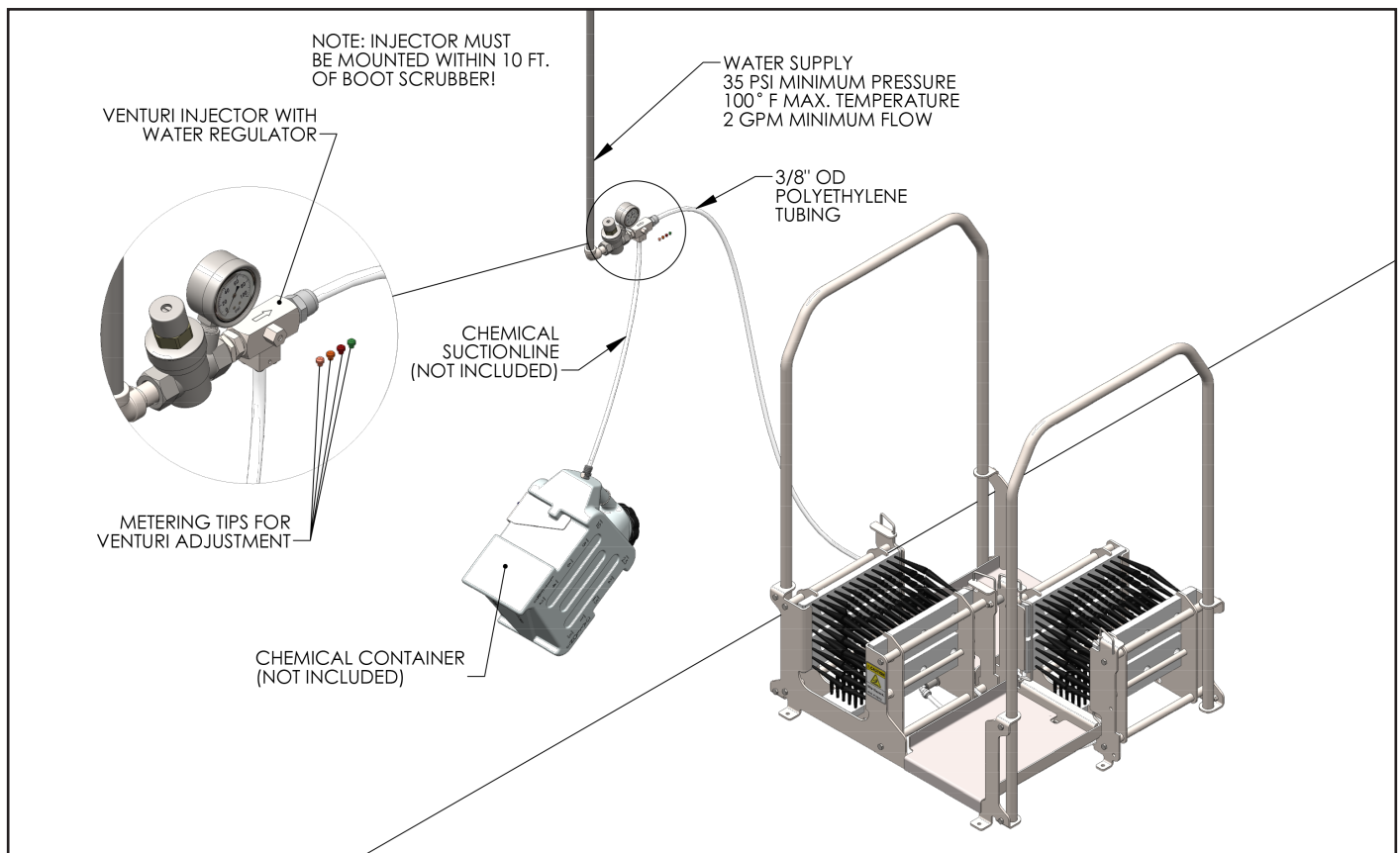


Fig. 5.1: Inserting Foot Plate

### Plumbing

1. Connect the water regulator on the Venturi to the water supply line (regulator thread = 1/2")
2. Using 3/8" OD polyethylene tubing (or similar) connect the sanitizer solution to be used to the Venturi's hose barb, as shown below:

**NOTE:** A back flow preventer must be installed in the water line for this unit. Check local codes to ensure proper installation.



## Installation (continued)

### Plumbing (continued)

- Using the push to connect fitting, connect the Venturi system to the BLX's water line located under the unit, near one of the foot plates [Figure 6.1].

**NOTE:** Injector must be mounted within 10 ft. of boot scrubber.

- Test the system by stepping on the footplate to engage the unit and begin spraying.
- Adjust the solution output as necessary using the included metering tips (instructions included).



### **WARNING:**

DO NOT use flammable liquids (i.e. alcohol based solutions or similar) without dilution.

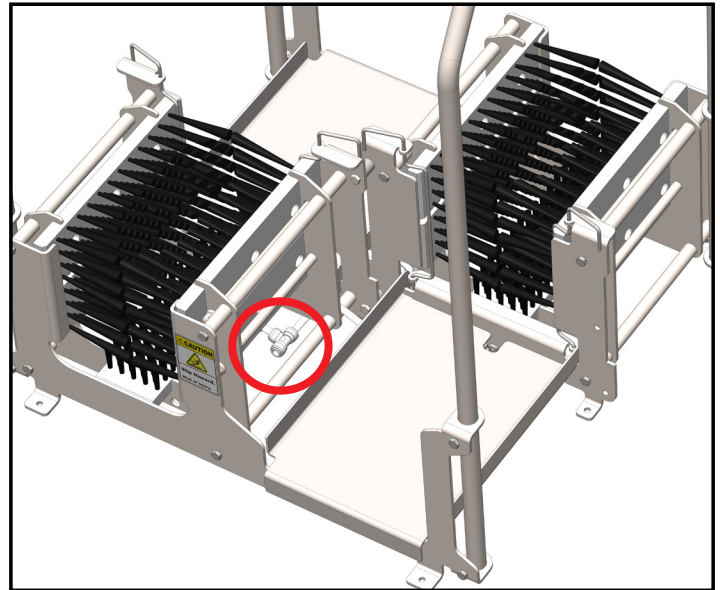


Fig. 6.1: Water line of BLX-200W

### Removing Brushes

- The brushes are held in place by the brush clip at the front of the unit.
- To remove the brushes, pull up on the clip and twist them outward, as shown in [Figure 5.2].
- Once unlocked, the brushes can be removed for cleaning, by slipping them out from their holders.

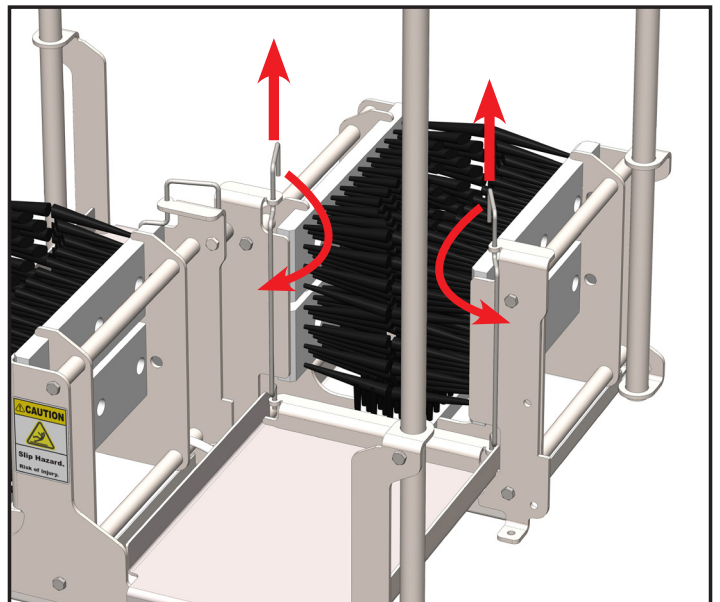


Fig. 6.2: Brush clip rotation for brush removal



## Operation

### General Use

Prior to use - ensure brushes, handrail, and foot plates are secured and the system itself properly installed. To verify water/sanitizer supply; step on the Foot Plate to initiate water/sanitizer flow. Before operating the unit, ensure solid footing and use both hands on the handrail for support.

1. To begin operation, step up to the unit and grip the support handrails.
2. Enter the unit from either end, placing one boot in the brush section and the other on the opposing foot plate to activate the spray system.
3. Push the boot back and forth multiple times so every part makes contact with the brushes.
4. Once the first boot is clean, remove it and walk through to the second scrubber and repeat the process with the other boot.
5. If boots are extremely dirty, it may be necessary to scrub them multiple times.

### Cleaning and Wash-Down

1. Shut off water supply to unit and depressurize water lines.
2. Remove the Foot Plates and brushes from the unit.
3. Brushes and Foot Plates can be washed, individually, in a COP tank, or wash machine.
4. The frame can be washed down by conventional means.

## Maintenance

The following maintenance procedures are recommended for normal use. Units which see a high amount of daily use should be inspected more frequently as necessary.

### Weekly:

- Inspect brushes for damage or wear.
- Check for missing or deformed bristles.
- Inspect plumbing/water lines for damage
- Ensure solid mounting to floor.

### Monthly:

- Check all fasteners to ensure they are tight.
- Ensure warning labels and decals are present and in good condition.
- Inspect valve for damage

### Quarterly:

- Inspect structure for cracked welds or bent components.

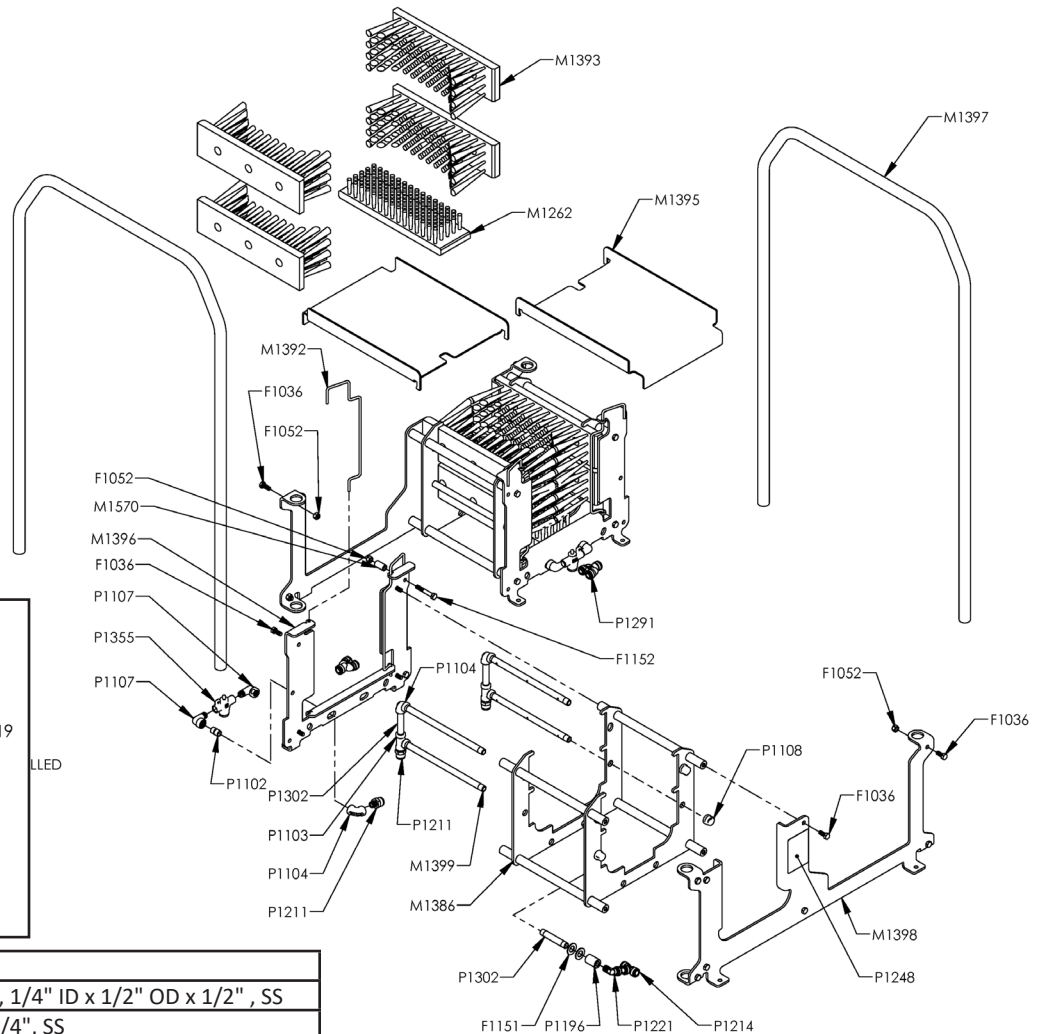
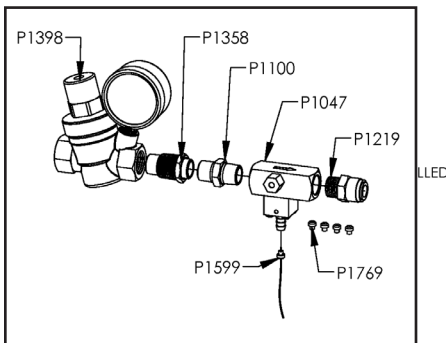
# USER MANUAL: BLX-200W

READ ALL INSTRUCTIONS BEFORE OPERATING EQUIPMENT



## Appendix A - Parts Callout

### Venturi Kit:



Part No.	Description
F1000	SPACER, UNTHREADED, 1/4" ID x 1/2" OD x 1/2" , SS
F1036	BOLT, HHC, 5/16-18 x 3/4", SS
F1052	NUT, NYLOCK, 5/16-18, SS
F1151	WASHER, FLAT, 9/16" X 1.062" , SS
F1152	BOLT, HHC, 5/16-18 x 2" , SS
M1262	BRUSH, BLX, BLOCK, 12-1/2"L X 3-5/8"W X 2-1/4"H, PP
M1388	BLX-100/200 BRUSH BOX WELDMENT
M1392	BRUSH CLIP, BLX-100/200
M1393	BRUSH, BLX SIDE, BLOCK, PP
M1395	BLX-200 FOOT PLATE, SS
M1396	BLX MANUAL FRONT PLATE
M1397	BLX-200 HANDRAIL
M1398	BLX-200 REAR PLATE
M1399	BLX MANUAL SPRAY BAR
M1570	SPACER, UNTHREADED, 5/16" ID X 1/2" OD X 1" , SS
P1047	INJECTOR, VENTURI, 3/8" FNPT X 3/8" FNPT, SS
P1100	PIPE NIPPLE, HEX, 3/8" NPT, SS
P1102	PIPE NIPPLE, CLOSE, 1/4" NPT, SS, 150 PSI
P1103	PIPE TEE, 1/4" FNPT, SS, 150 PSI
P1104	PIPE ELBOW, 1/4" FNPT X 1/4" FNPT, 316SS, 150 PSI
P1107	PIPE ELBOW, STREET, 1/4" FNPT X 1/4" MNPT, 316SS, 150 PSI
P1108	PIPE CAP, HEX, 1/4" NPT, SS, 150 PSI

Part No.	Description
P1196	PIPE COUPLER, 1/4" NPT, SS, 150 PSI
P1211	QUICK FIT, ADAPTER, 1/4" MNPT X 3/8" TUBE, PP BODY, EPDM SEAL
P1214	QUICK FIT, TEE, 3/8" TUBE X 3/8" TUBE X 3/8" TUBE, PP BODY, EPDM SEAL
P1219	QUICK FIT, ADAPTER, 3/8" MNPT X 3/8" TUBE, PP BODY, EPDM SEAL
P1221	QUICK FIT, ELBOW, 1/4" MNPT X 3/8" TUBE, PP BODY, EPDM SEAL
P1291	QUICK FIT, WYE, 3/8" TUBE X 3/8" TUBE X 3/8" TUBE, PP BODY, EPDM SEAL
P1302	PIPE NIPPLE, 1/4" NPT X 3", SS
P1355	VALVE, PUSH BUTTON, 1/4" FNPT X 1/4" FNPT, SS BODY, PTFE SEAT, CUSTOM STIFF SPRING
P1358	PIPE BUSHING, 1/2" MNPT X 3/8" FNPT, SS, 150 PSI
P1398	REGULATOR, PRESSURE, WATER, 1/2" FNPT, SS
P1599	METERING TIP, CAPILLARY TUBE
P1769	METERING TIPS, ULTRA LEAN ASSORTMENT
P2456	GAUGE, PRESSURE, 2", 0-150psi, 1/4" NPT, SS CASE, BRASS CONNECTION, CENTER BACK MOUNT



# USER MANUAL: BLX-200W

READ ALL INSTRUCTIONS BEFORE OPERATING EQUIPMENT



## Appendix B - Dimensions

