



---

# USER MANUAL

---

MODEL:

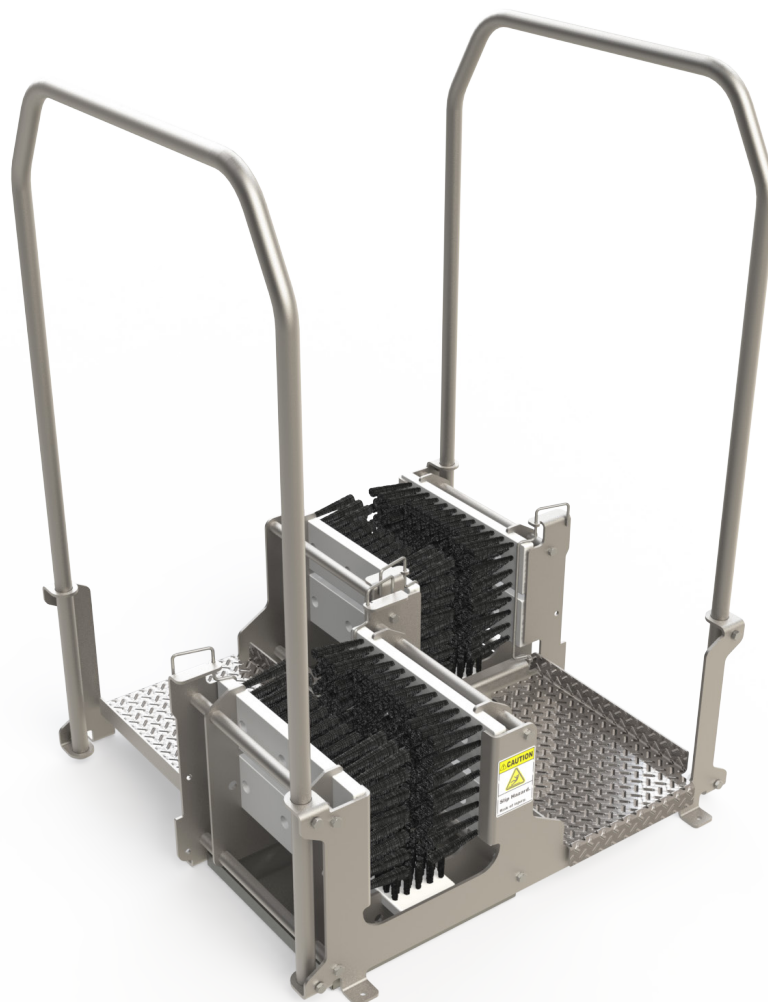
**BLX-200D**

**Dual Manual BootScrubber (Dry)**

---

*English (Original Instructions)*

*Updated: 02/11/21*



# USER MANUAL: BLX-200D

READ ALL INSTRUCTIONS BEFORE OPERATING EQUIPMENT



## Overview

The BLX-200D is an all manual, dual footwear scrubbing unit. Designed and built as a solid member, open stainless steel frame with a solid hand rail for support. The BLX-200D features two sets of removable sole brushes and eight removable vertical side brushes, each of which require no tools. Being a manual based, dry unit the BLX-200D requires no electrical or water connections.

## Specifications

- Frame - 304 Stainless Steel
- Length - 29  $\frac{1}{2}$  in.
- Width - 28 in.
- Height - 42 in.



### CAUTION:

1. Always follow plant and OSHA guidelines about the use of hygiene equipment.
2. All personnel using this unit must be familiar with the information contained in this manual. Follow all installation and maintenance instructions.
3. Always wear appropriate footwear. Secure or remove loose items on footwear.
4. Ensure solid footing and use both hands when operating the unit.

## Installation

### Installing and Mounting the Unit

1. Set unit in desired location.
2. Aspects to consider when deciding on placement:
  - Clearance for entering and exiting.
  - Traffic flow for unit operation.
  - Emergency exit paths or egress in case of emergency.
  - Head room for personnel while using the unit.
3. Once the unit is in the desired location, use a level to make sure the unit is stable and level in all directions [Figure 3.1]. Make sure the location is a flat surface.
4. Using the 4 mounting brackets located at each corner, securely fasten the unit to the floor with appropriate hardware for the given material (i.e. concrete anchors and bolts) as shown in [Figure 3.2]



### WARNING

If not properly secured to floor the unit may tip over and has the potential to cause personal injury.

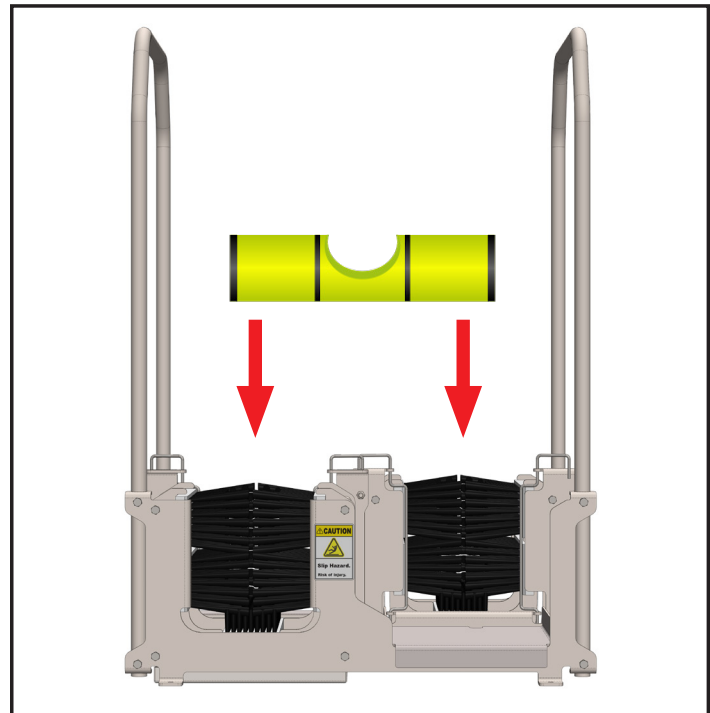


Fig. 3.1: Verify level of bootscrubber at each end

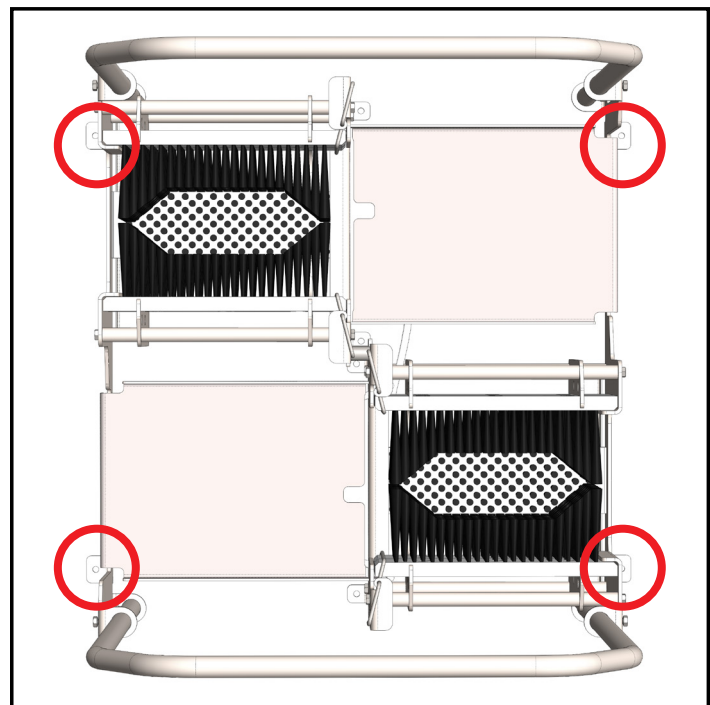


Fig. 3.2: Mounting bracket locations

General

Installation

Operation

Appendix

## Installation (continued)

### Installing Handrail

Due to the shipment size, the BLX-200 will arrive with the handrail disconnected.

1. Place handrail through the mounting brackets on each side of the unit [Figure 4.1].
2. Using two 1/2" wrenches tighten the bolt through the locknut until the bolt bottoms out against the handrail to secure in place [Figure 4.2].
3. Repeat for remaining bolts to secure the handrail (8 bolts total).

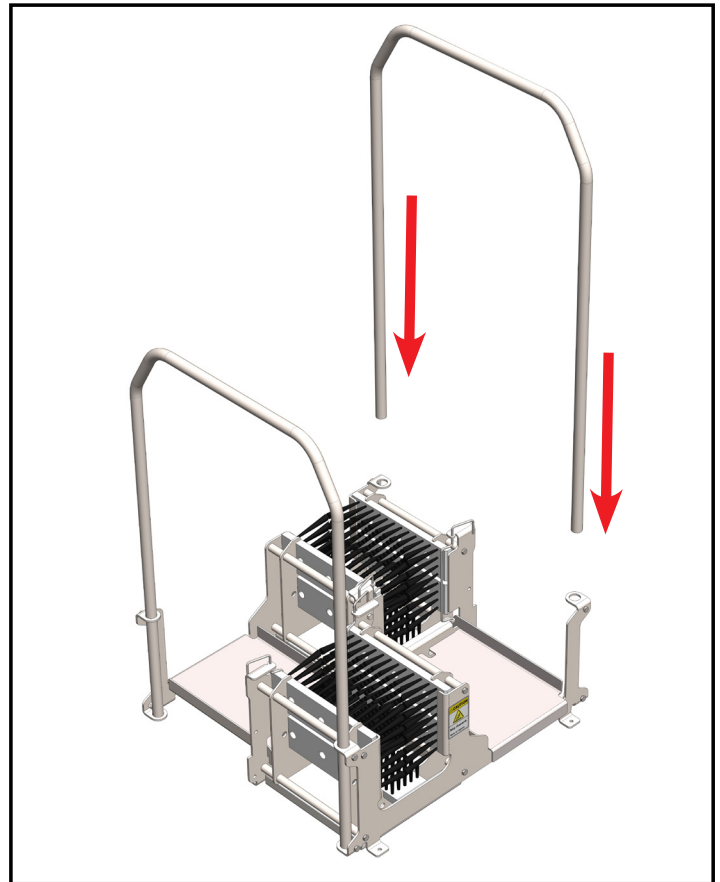


Fig. 4.1: Installing Handrail

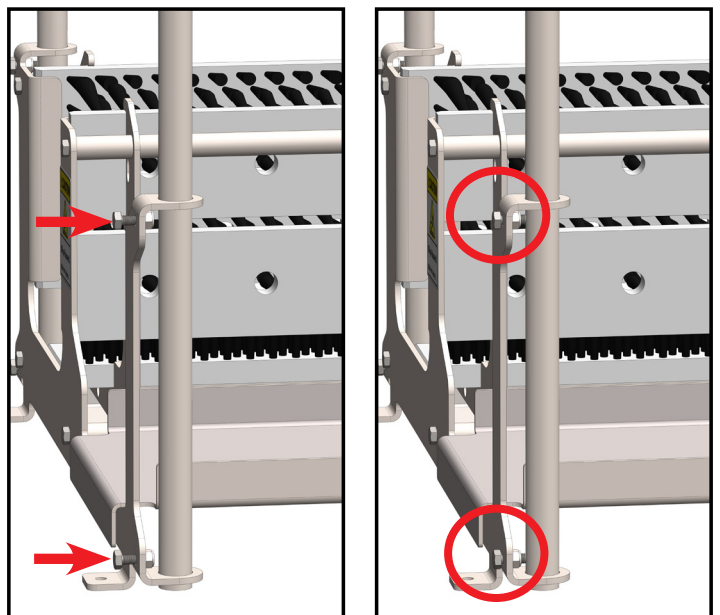


Fig. 4.2: Handrail stabilization bolts

## Installation (continued)

### Installing Foot Plate

1. Place the Foot Plates at the opening of each end of the unit.
2. Make sure the notches on the plate line up with the holes on the unit, as shown in [Figure 5.1].

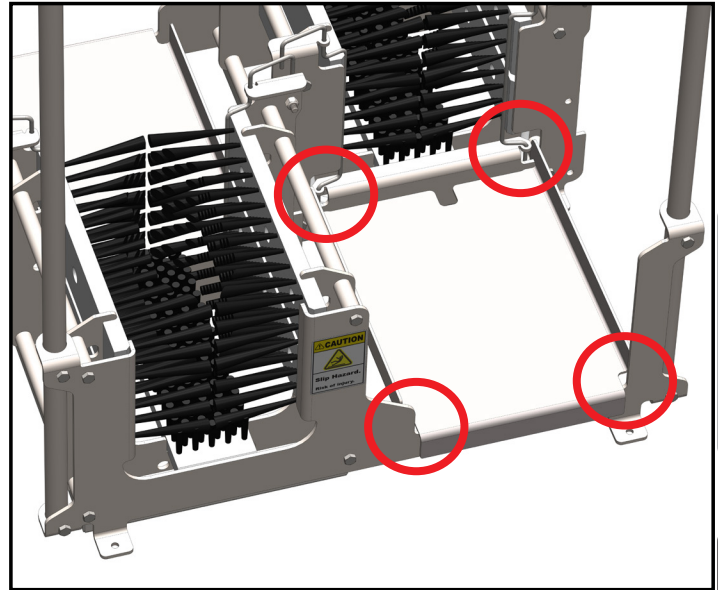


Fig. 5.1: Inserting Foot Plate

### Removing Brushes

1. The brushes are held in place by the brush clip at the front of the unit.
2. To remove the brushes, pull up on the clip and twist them outward, as shown in [Figure 5.2].
3. Once unlocked, the brushes can be removed for cleaning, by slipping them out from their holders.

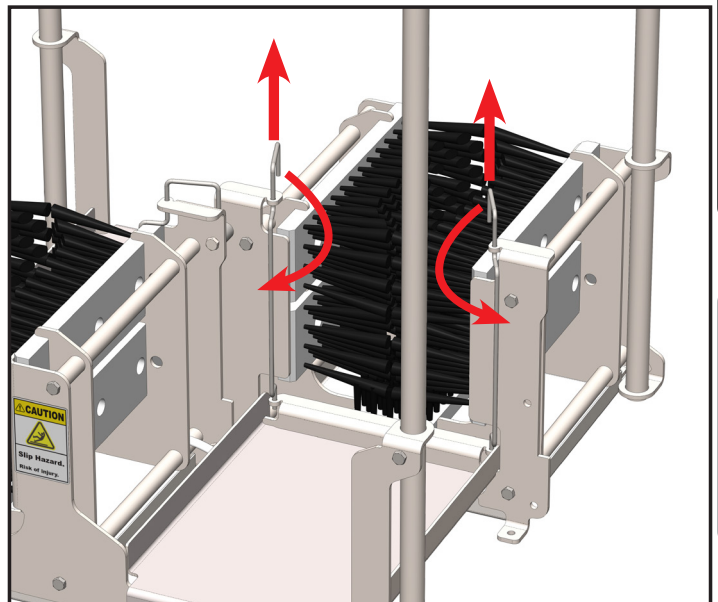


Fig. 5.2: Brush clip rotation for brush removal

General

Installation

Operation

Appendix

## Operation

### General Use

Prior to use - ensure brushes, handrail, and foot plates are secured and the system itself properly installed. Before operating the unit, ensure solid footing and use both hands on the handrail for support.

1. To begin operation, step up to the unit and grip the support handrails.
2. Enter the unit from either end, placing one boot in the brush section and the other on the opposing foot plate.
3. Push the boot back and forth multiple times so every part makes contact with the brushes.
4. Once the first boot is clean, remove it and walk through to the second scrubber and repeat the process with the other boot.
5. If boots are extremely dirty, it may be necessary to scrub them multiple times.

### Cleaning and Wash-Down

1. Remove the Foot Plates and brushes from the unit.
2. Brushes and Foot Plates can be washed, individually, in a COP tank, or wash machine.
3. The frame can be washed down by conventional means.

## Maintenance

The following maintenance procedures are recommended for normal use. Units which see a high amount of daily use should be inspected more frequently as necessary.

### Weekly:

- Inspect brushes for damage or wear.
- Check for missing or deformed bristles.
- Ensure solid mounting to floor.

### Monthly:

- Check all fasteners to ensure they are tight.
- Ensure warning labels and decals are present and in good condition.

### Quarterly:

- Inspect structure for cracked welds or bent components.

READ ALL INSTRUCTIONS BEFORE OPERATING EQUIPMENT

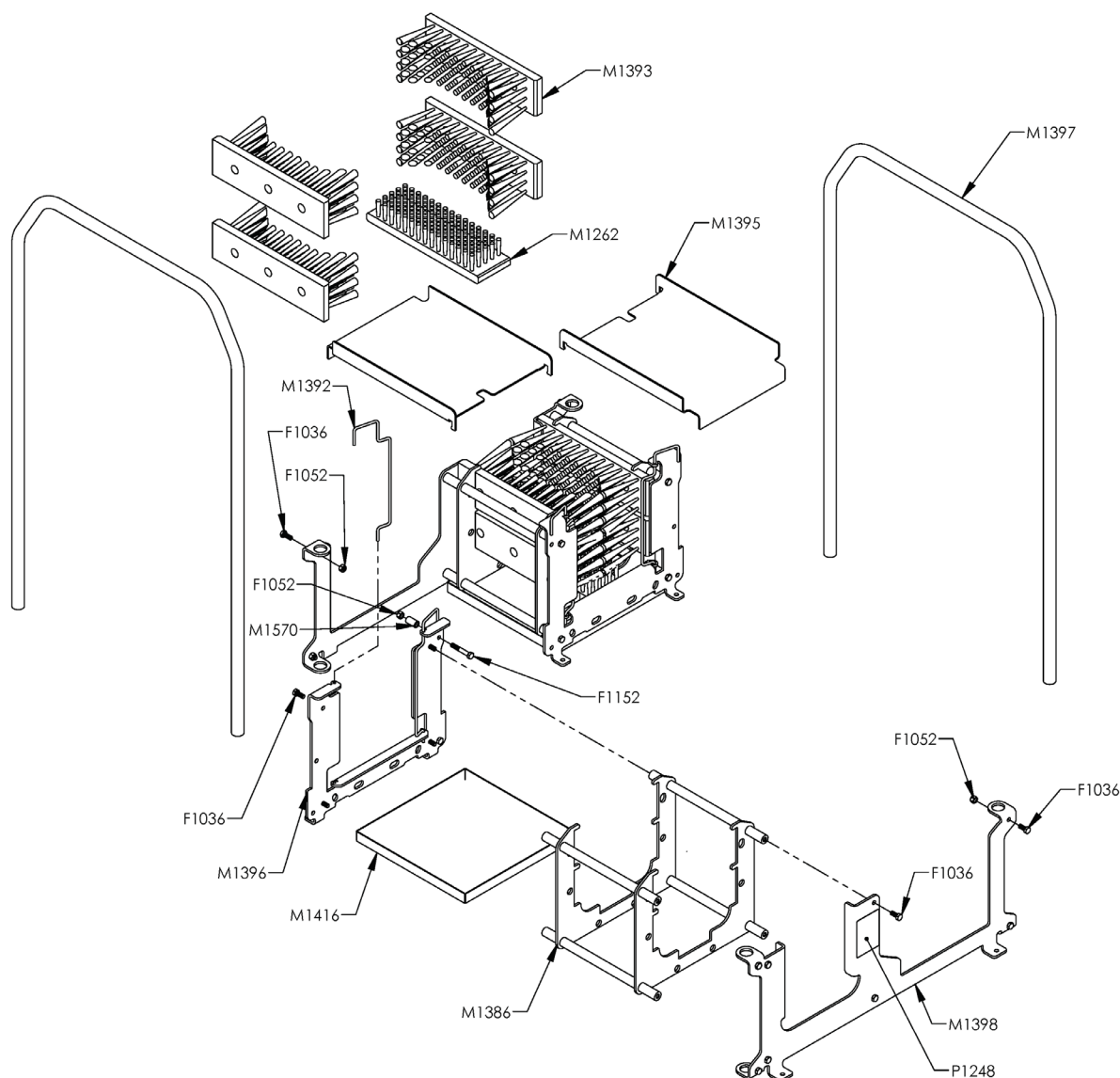
[illegible]

# USER MANUAL: BLX-200D

READ ALL INSTRUCTIONS BEFORE OPERATING EQUIPMENT



## Appendix A - Parts Callout



Part No.	Description
F1036	BOLT HHC 5/16-18 X 3/4 SS
F1052	NUT NYLOCK 5/16-18 SS
F1152	BOLT HHC 5/16-18 X 2 SS
M1262	BRUSH FIXED 10-1/2 X 3
M1388	BRUSH BOX WLD MNT
M1392	BRUSH CLIP
M1393	FIXED SIDE BRUSH

Part No.	Description
M1395	FOOT PLATE BLX-200
M1396	FRONT PLATE BLX MANUAL
M1397	HANDRAIL BLX-200
M1398	REAR PLATE BLX-200
M1407	SPACER BLX-200
M1416	DEBRIS TRAY
P1248	LABEL SLIP HAZARD

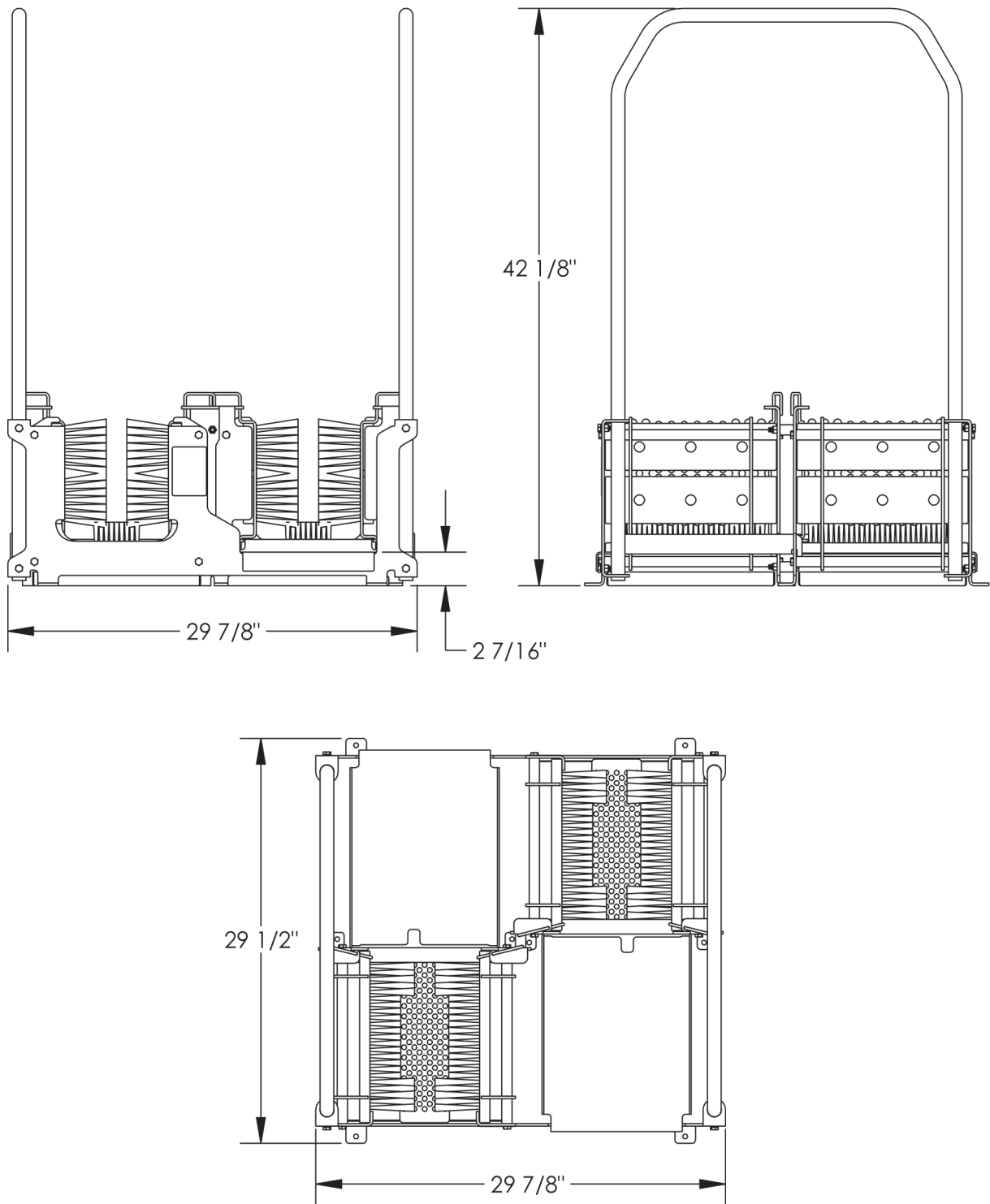


**USER MANUAL: BLX-200D**

READ ALL INSTRUCTIONS BEFORE OPERATING EQUIPMENT



**Appendix B - Dimensions**



General

Installation

Operation

Appendix