



---

# USER MANUAL

---

MODEL:

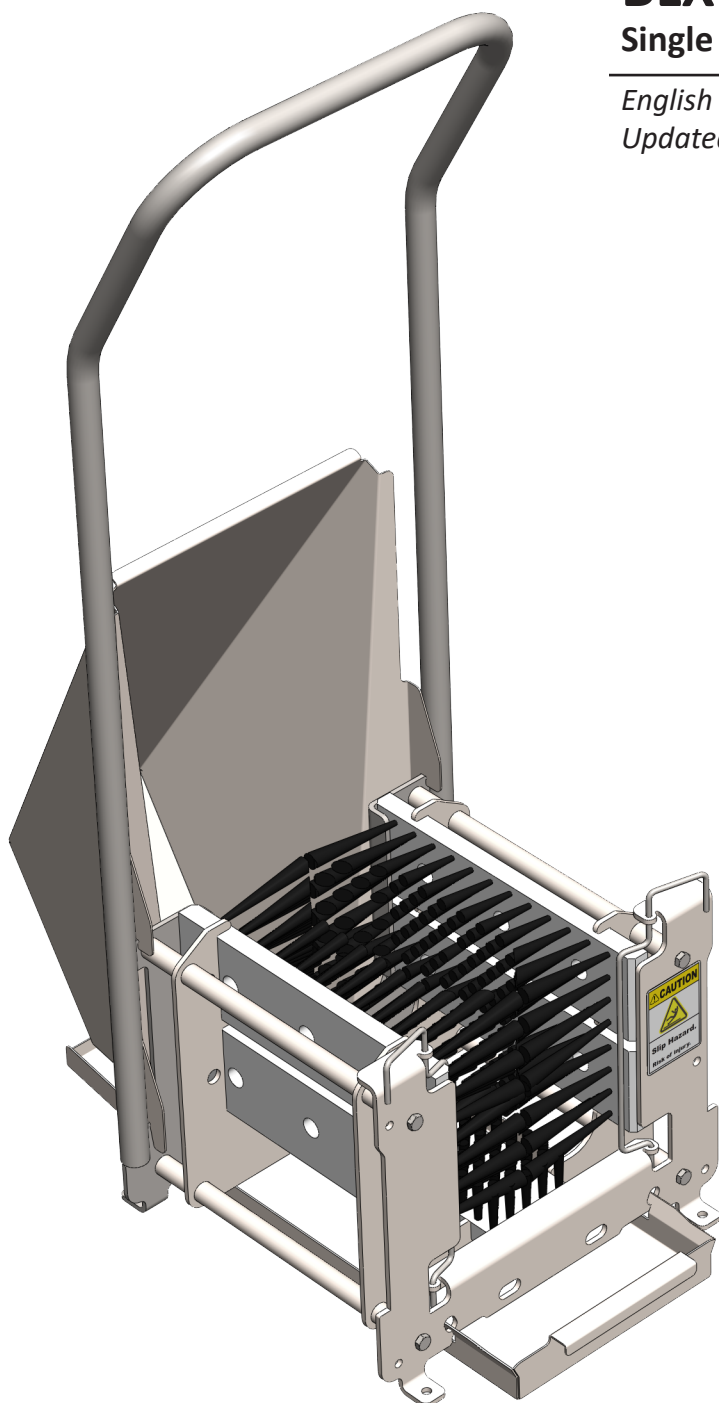
**BLX-100D**

**Single Manual BootScrubber (Dry)**

---

*English (Original Instructions)*

*Updated: 02/11/21*



# USER MANUAL: BLX-100D

READ ALL INSTRUCTIONS BEFORE OPERATING EQUIPMENT



## Overview

The BLX-100D is an all manual, single footwear scrubbing unit. Designed and built as a solid member, open stainless steel frame with a solid hand rail for support. The BLX-100D features one removable sole brush and four removable vertical side brushes, each of which require no tools. Being a manual based, dry unit the BLX-100D requires no electrical or water connections.

## Specifications

- Frame - 304 Stainless Steel
- Length - 28 in.
- Width - 15 in.
- Height - 44 in.



### **CAUTION:**

1. Always follow plant and OSHA guidelines about the use of hygiene equipment.
2. All personnel using this unit must be familiar with the information contained in this manual. Follow all installation and maintenance instructions.
3. Always wear appropriate footwear. Secure or remove loose items on footwear.
4. Ensure solid footing and use both hands when operating the unit.

## Installation

### Installing and Mounting the Unit

1. Set unit in desired location.
2. Aspects to consider when deciding on placement:
  - Clearance for entering and exiting.
  - Traffic flow for unit operation.
  - Emergency exit paths or egress in case of emergency.
  - Head room for personnel while using the unit.
3. Once the unit is in the desired location, use a level to make sure the unit is stable and level in all directions. Make sure the location is a flat surface.
4. Using the 4 mounting brackets near each corner, securely fasten the unit to the floor with appropriate hardware for the given material (i.e. concrete anchors and bolts) as shown in [Figures 3.1 and 3.2]



### WARNING

If not properly secured to floor the unit may tip over and has the potential to cause personal injury.

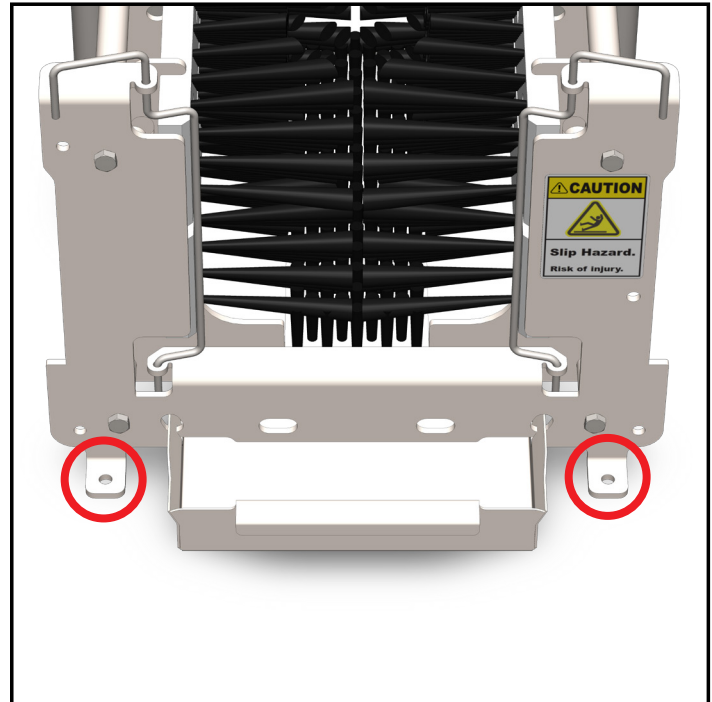


Fig. 3.1: Rear mounting brackets

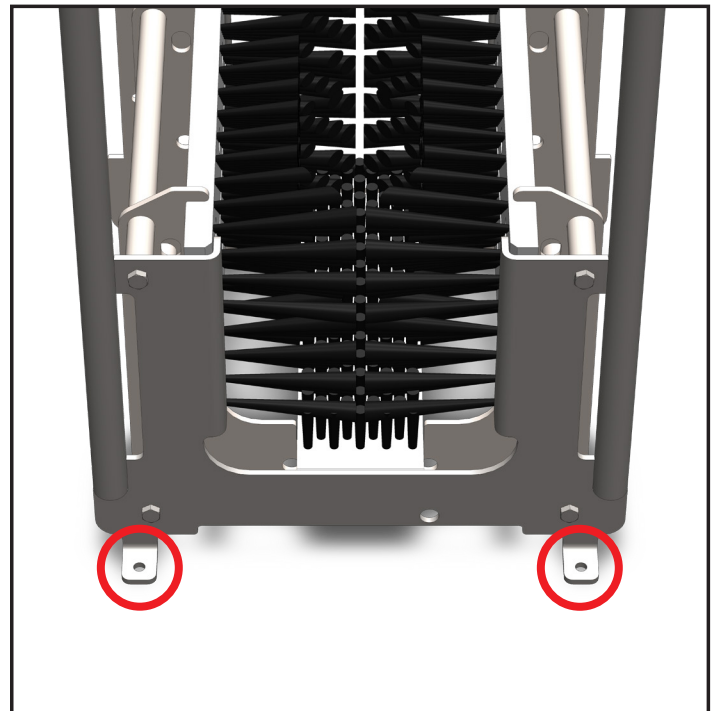


Fig. 3.2: Front mounting brackets

General

Installation

Operation

Appendix

## Installation (continued)

### Installing Debris Tray

1. Place the Debris Tray at the opening of the unit and insert it underneath the frame. [Figure 4.1]
2. Make sure the tabs on the plate line up with the holes on the unit, as shown in [Figure 4.2]

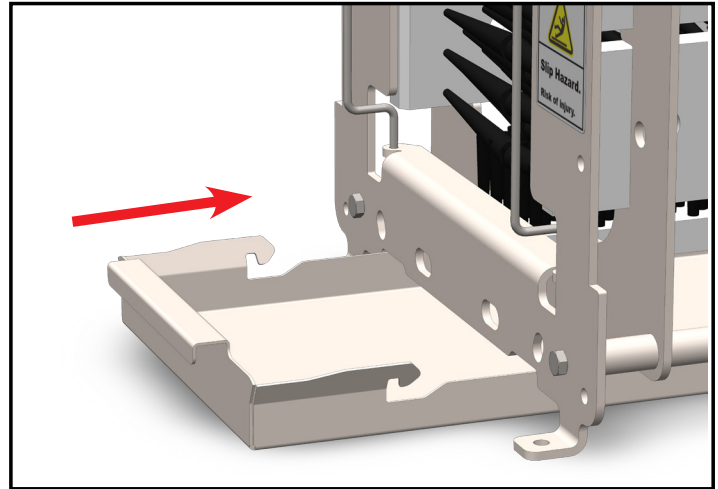


Fig. 4.1: Inserting Debris Tray

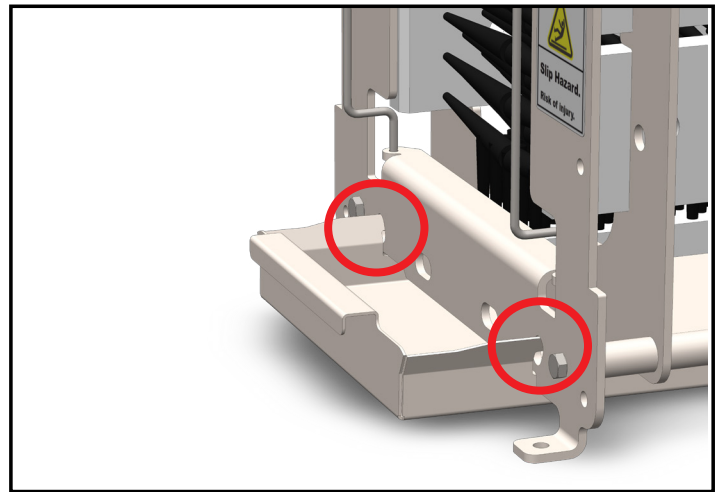


Fig. 4.2: Attachment points for Debris Tray

### Removing Brushes

1. The brushes are held in place by the brush clip at the front of the unit.
2. To remove the brushes, pull up on the clip and twist them outward, as shown in [Figure 4.3].
3. Once unlocked, the brushes can be removed for cleaning, by slipping them out from their holders.

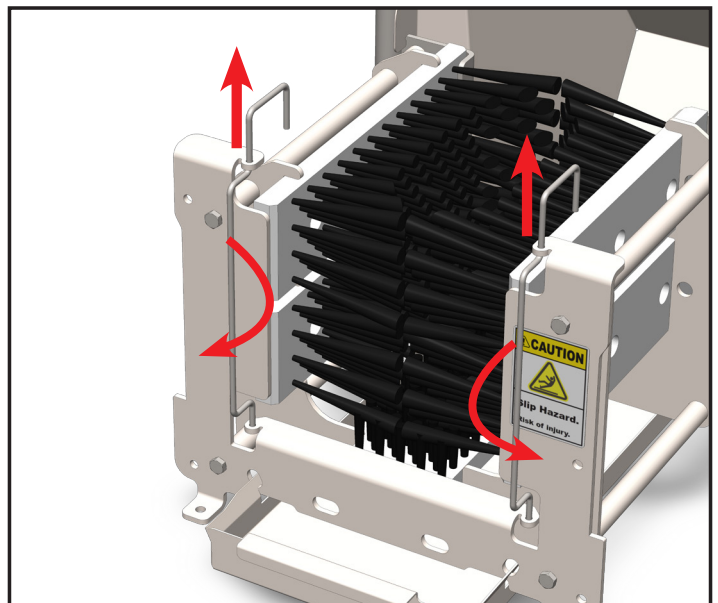


Fig. 4.3: Brush clip rotation for brush removal

## Operation

### General Use

Prior to use - ensure brushes and debris tray are secured and the system itself properly installed. Before operating the unit, ensure solid footing and use both hands on the handrail for support.

1. To begin operation, step up to the unit and grip the support handrail.
2. Place one boot in the unit.
3. Push the boot back and forth multiple times so every part makes contact with the brushes.
4. Once the first boot is clean, remove it and repeat the process with the second boot.
5. If boots are extremely dirty, it may be necessary to scrub them multiple times.

### Cleaning and Wash-Down

1. Remove the Debris Tray and brushes from the unit.
2. Brushes and Debris Tray can be washed, individually, in a COP tank or wash machine
3. The frame can be washed down by conventional means.

## Maintenance

The following maintenance procedures are recommended for normal use. Units which see a high amount of daily use should be inspected more frequently as necessary.

### Weekly:

- Inspect brushes for damage or wear.
- Check for missing or deformed bristles.
- Ensure solid mounting to floor.

### Monthly:

- Check all fasteners to ensure they are tight.
- Ensure warning labels and decals are present and in good condition.

### Quarterly:

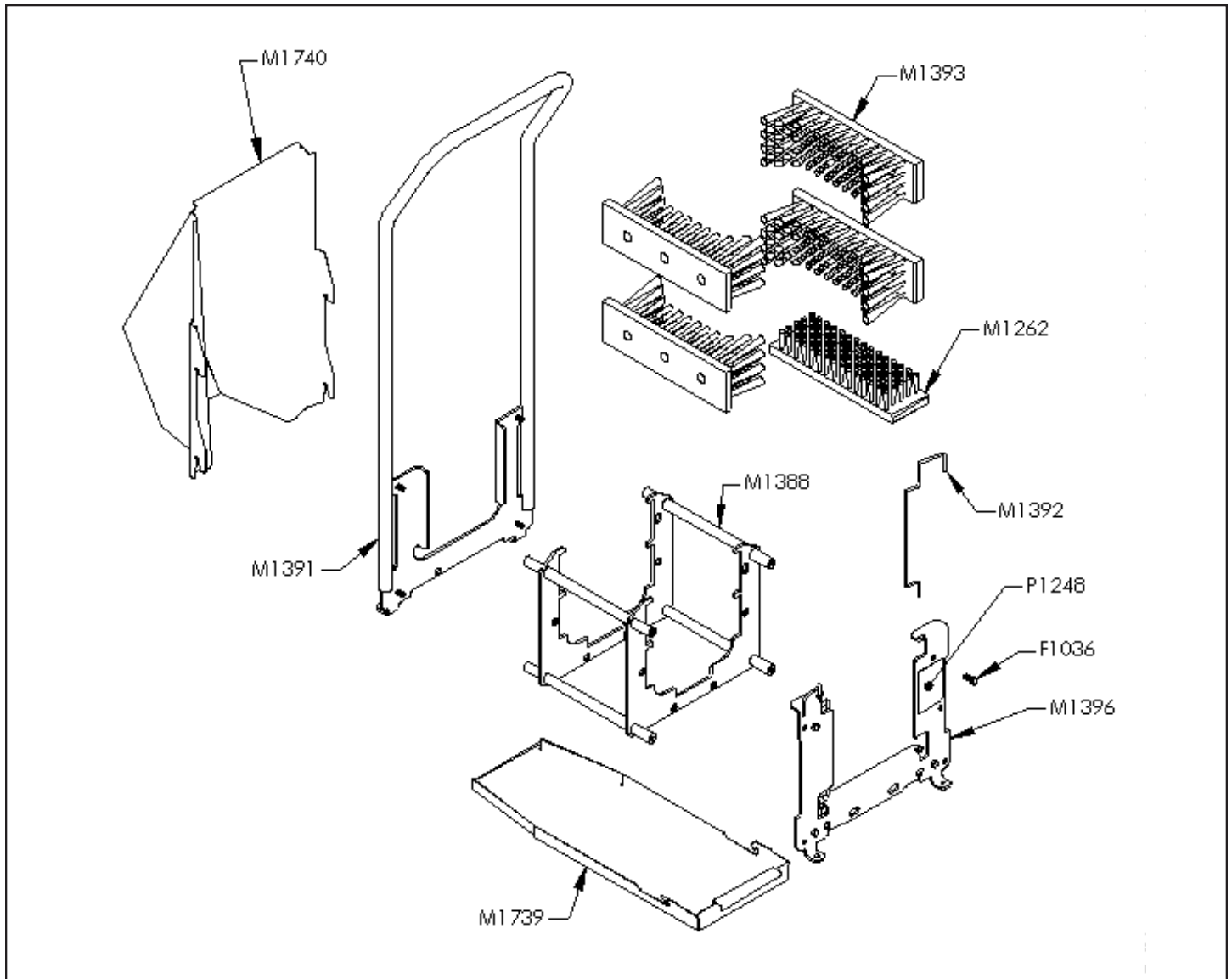
- Inspect structure for cracked welds or bent components.

# USER MANUAL: BLX-100D

READ ALL INSTRUCTIONS BEFORE OPERATING EQUIPMENT



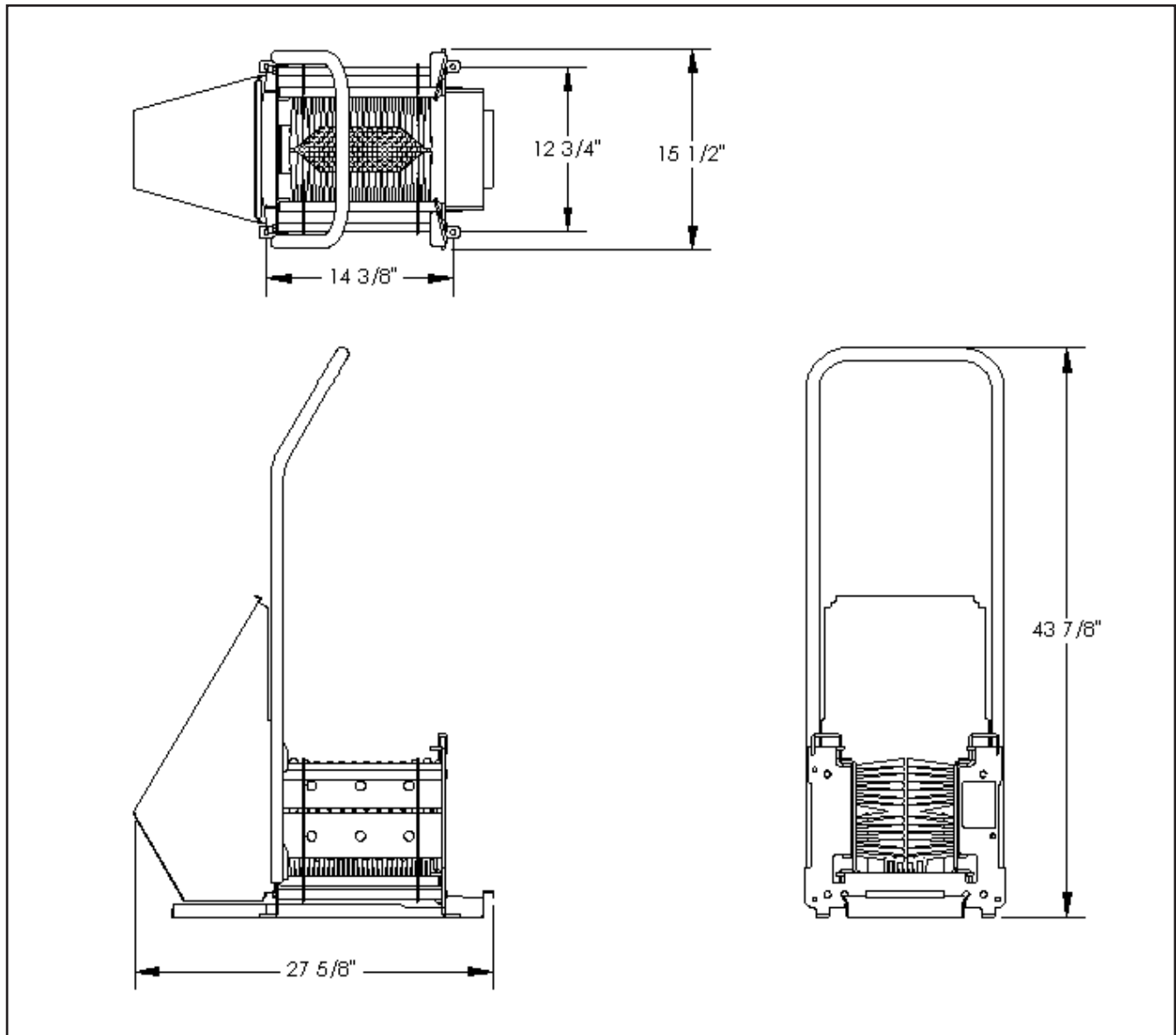
## Appendix A - Parts Callout



Part No.	Description
F1036	BOLT HHC 5/16-18 X 3/4 SS
M1262	BRUSH FIXED 10-1/2 X 3
M1388	BRUSH BOX WLDMNT
M1391	HANDLE WLDMNT BLX-100
M1392	BRUSH CLIP

Part No.	Description
M1393	FIXED SIDE BRUSH
M1396	FRONT PLATE BLX MANUAL
M1739	DEBRIS TRAY BLX-100D
M1740	DEBRIS SHIELD BLX-100D
P1248	LABEL SLIP HAZARD

## Appendix B - Dimensions



General

Installation

Operation

Appendix