



---

# USER MANUAL

---

MODEL:

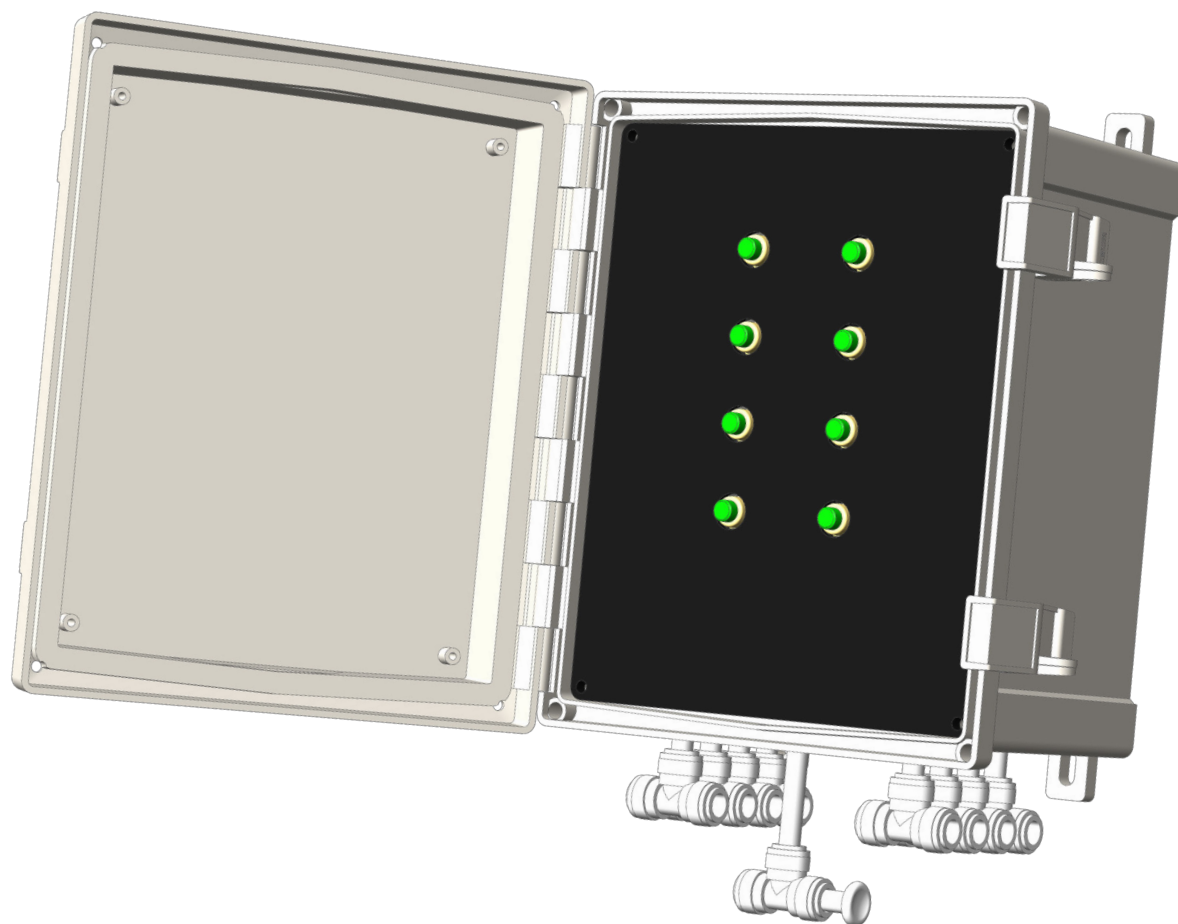
**ALX-ABB**

**Chemical Allocation Manual Air Button Box**

---

*English (Original Instructions)*

*Updated: 03/24/21*



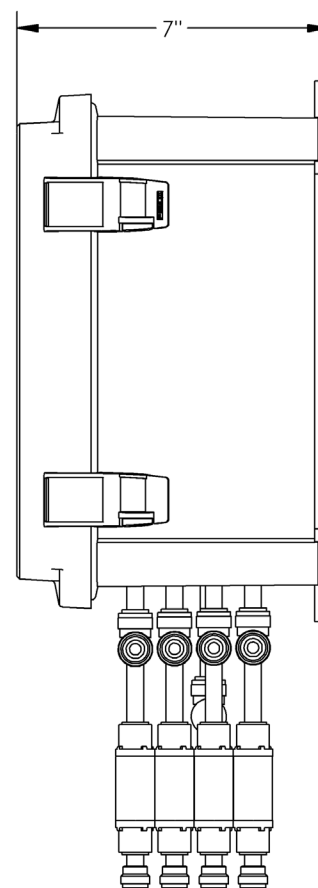
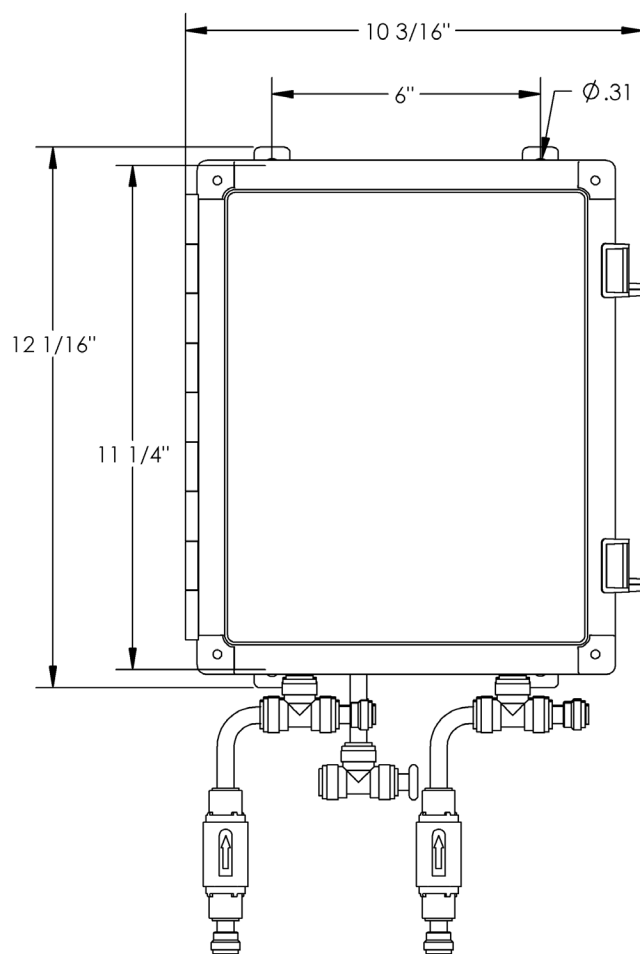
## Installation

1. Determine mounting location, with consideration of the following:

- User accessibility
- Distance to ALX controller/tower
- Distance to Devices and pumps
- Connections for air

**NOTE:** For more information on Controller installation requirements and configuration please consult the User Manual for the included ALX Controller for model-specific requirements.

2. Using appropriate mounting hardware (not included) to install.



# USER MANUAL: ALX-ABB

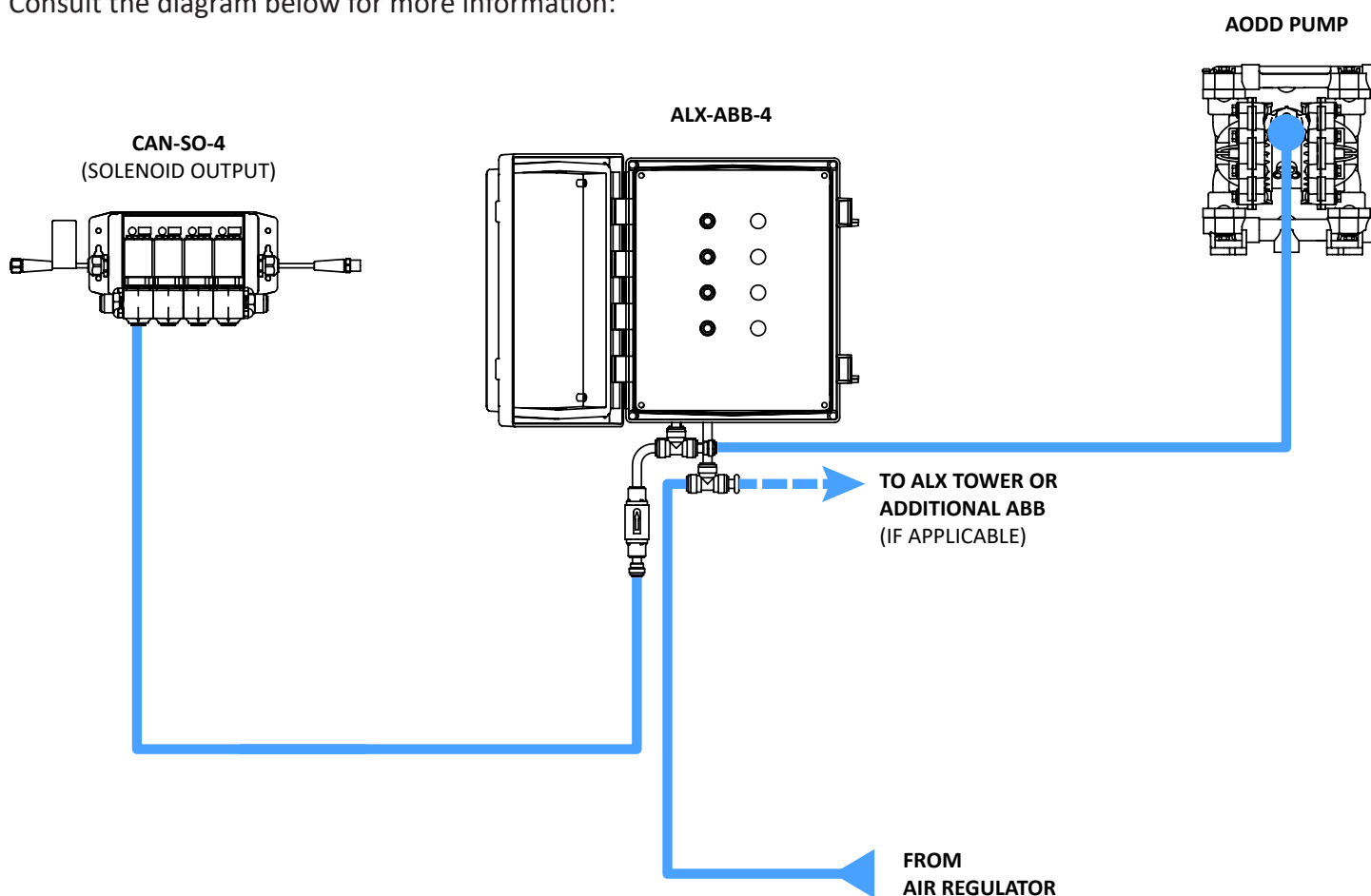
READ ALL INSTRUCTIONS BEFORE OPERATING EQUIPMENT



## Installation (cont.)

1. Connect regulated compressed air supply to main airline inlet.
  - If ALX Tower or additional ALX-ABB is to be used with the system, remove plug from tee fitting and connect additional airlines as necessary.
2. Connect air lines from solenoid devices to the air inlet check valves.
3. Connect air lines to the chemical pumps for each corresponding solenoid output.

Consult the diagram below for more information:



**NOTE:** Example connection shows ALX-ABB-4, installation set-up may vary.

# USER MANUAL: ALX-ABB

READ ALL INSTRUCTIONS BEFORE OPERATING EQUIPMENT

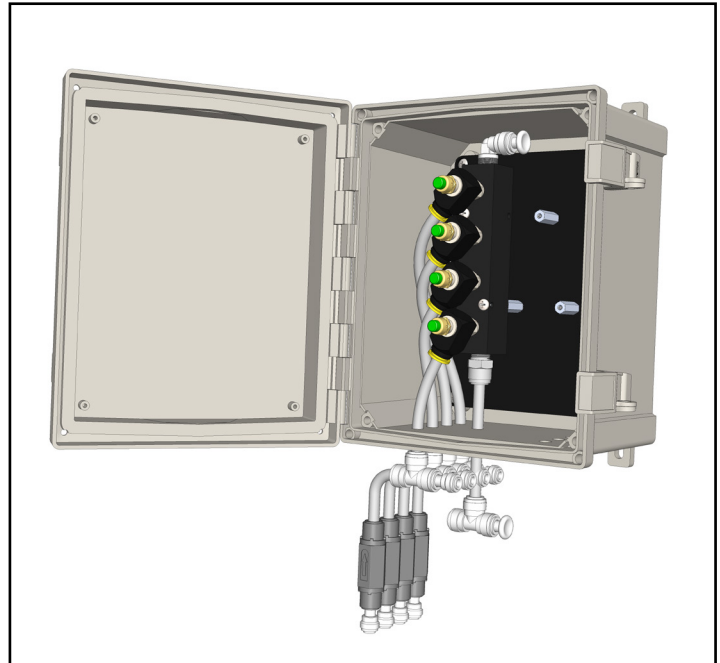


## Operation

1. In the event a manual dispense needs to be initiated, identify the pump/chemical to be dispensed and it's override control button.

**NOTE:** Check valves connect to push buttons front to back / bottom to top (i.e. the front check connects to the bottom button and so on).

2. Press and hold the button to dispense.
3. When dispense volume has been obtained, release the button to stop the dispense.



## Maintenance

1. Check hose/tubing for secure connections
2. Ensure there are no air line leaks
3. Verify air regulator settings (consult ALX controller manual for recommended regulator settings)

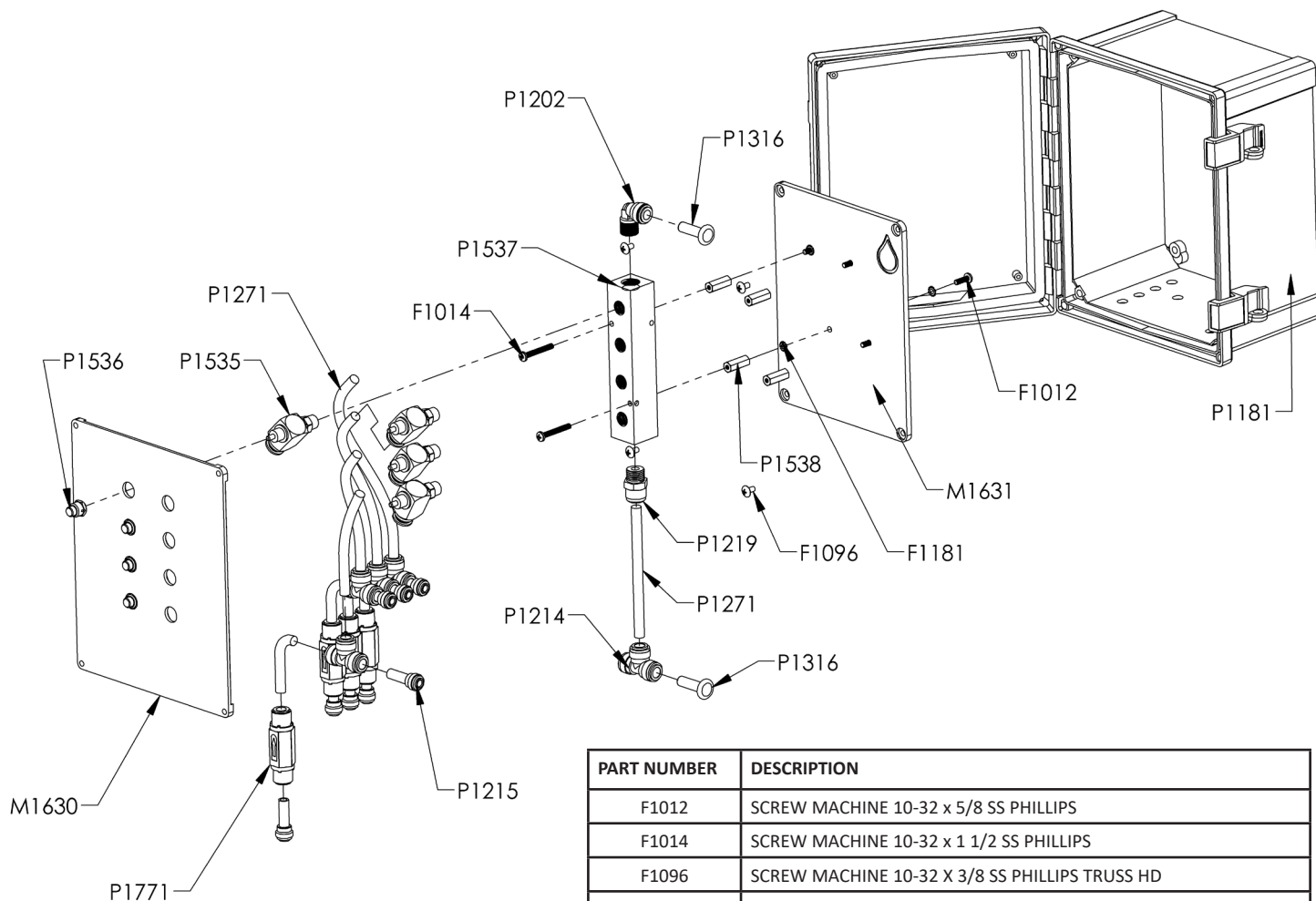


### More Information

Please contact Clean Logix at:

**(616)-438-9200** or **[sales@clean-logix.com](mailto:sales@clean-logix.com)**

## Appendix - Parts Callout



PART NUMBER	DESCRIPTION
F1012	SCREW MACHINE 10-32 x 5/8 SS PHILLIPS
F1014	SCREW MACHINE 10-32 x 1 1/2 SS PHILLIPS
F1096	SCREW MACHINE 10-32 X 3/8 SS PHILLIPS TRUSS HD
F1181	WASHER LOCK EXT TOOTH #10 SS
M1630	ABB FRONT PLATE
M1631	ABB REAR PLATE
P1181	ENCLOSURE FIBOX AR1086CHSSL
P1202	QUICK FIT ELBOW 3/8" NPT X 3/8" TUBE
P1214	QUICK FIT TEE 3/8"
P1215	QUICK FIT REDUCER 3/8" X 1/4"
P1219	QUICK FIT ADAPTER 3/8" NPT x 3/8" TUBE
P1271	3/8" OD POLYETHYLENE TUBING - NATURAL
P1316	QUICK FIT PLUG 3/8"
P1535	VALVE STEM 1/4 NPT X 3/8 QUICK FIT QTY. BREAKS AT 50, 100
P1536	VALVE PUSHBUTTON ACTUATOR GREEN/ENP, QTY. BREAKS AT 50, 100
P1537	MANIFOLD 1/4" 4-PORT 3/8" INLETS
P1538	STANDOFF 10-32 X 1 F-F HEX AL
P1771	CHECK VALVE, 3/8 QUICK FIT X 3/8 QUICK FIT