

# ASV50

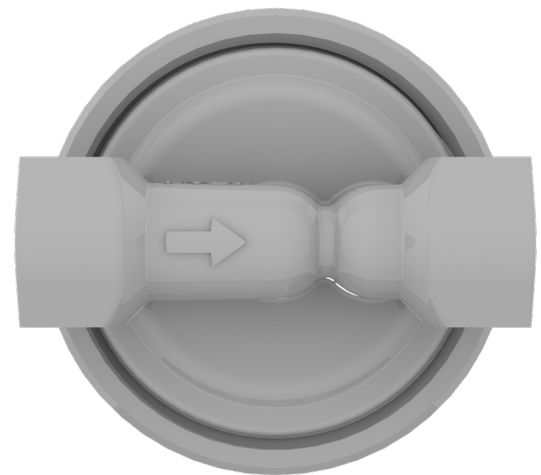
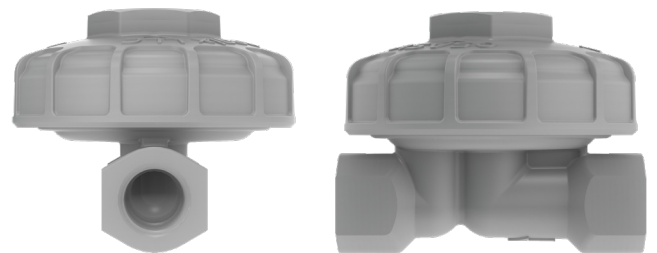


## ANTI SUCTION VALVE (1/2" NPT)

The ASV Anti Suction Valve is an anti siphoning device for pump dispense and CIP injection applications for chemicals or other liquids. In the forward flow direction, the ASV behaves similarly to a check valve with a cracking pressure of 5 PSI. Unlike a check valve, fluid flow is blocked when suction is applied to the outlet regardless of how strong the suction is. **The ASV does not prevent backflow of fluid** and should be used in conjunction with a check valve in most cases for this reason.

The ASV will prevent siphoning in situations where suction is present at the chemical injection point such as the suction side of a pump in a CIP loop.

Constructed of injection molded PVDF polymer, its durable construction ensures durability and a broad range of chemical compatibility. A non-wetted 316 stainless steel spring controls the opening and closing of the diaphragm which is available as EPDM, Silicone, or Viton. The diaphragm and spring are easily serviceable by simply unscrewing the top cap by hand. No small metallic fasteners to deal with!



## FEATURES:

- Prevents tank siphoning due to suction  
*\*does not prevent gravity push\**
- 1/2" NPT inlet and outlet with flow indicator
- Larger inlet than traditional anti-suction valves
- Flows more than other anti-siphon or suction valves
- Easy to remove diaphragm (no hardware or metallic fasteners)
- Integrated shield prevents spray in the event of diaphragm failure
- Built to handle chemicals (PVDF and 316SS)
- Able to be serviced while installed in-line

Dimensions	3-3/4" x 2-7/8" x 3-5/8"
Min. Opening Pressure	5 PSI (34 kPa)
Max Pressure	80 PSI (550 kPa)
Materials of Construction	PVDF and 316 SS

# ASV50 ANTI SUCTION VALVE (1/2")



Cap & Spray Shield



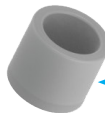
Top "Hat"



316 SS Spring



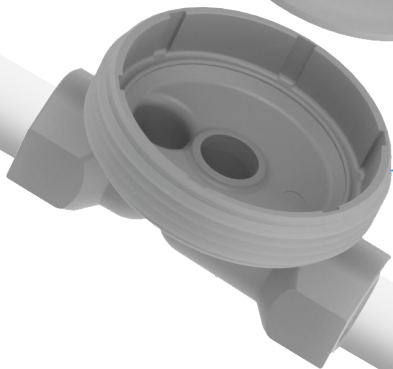
Piston



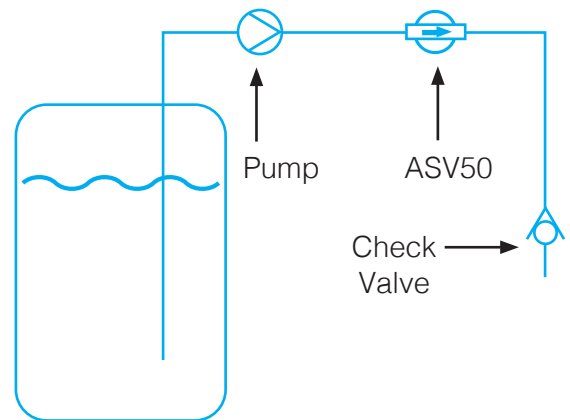
Diaphragm



Base



Place inline to prevent siphoning due to suction.



Example installation schematic.  
Best used with a check valve

MORE  
INFORMATION  
OR  
BUY ONLINE



## PART NUMBERS

Part #	Description	Diaphragm	Best For
ASV50-E5	ASV50 Anti-Suction Valve, 1/2", EPDM Diaphragm, 316SS Spring, PVDF Body, 5 PSI Opening Pressure	EPDM	Alkalines, Chlorinated Alkalines, Lubricants, Neutral/Surfactants
ASV50-S5	ASV50 Anti-Suction Valve, 1/2", Silicone Diaphragm, 316SS Spring, PVDF Body, 5 PSI Opening Pressure	Silicone	Neutral/Surfactants, Peracid
ASV50-V5	ASV50 Anti-Suction Valve, 1/2", Viton Diaphragm, 316SS Spring, PVDF Body, 5 PSI Opening Pressure	Viton	Chlorine Sanitizer, Acetic Acid, Nitric Acid, Phosphoric Acid

Add **-KIT** to part number to include kynar hose barbs (1/2" and 3/8") and clamps for complete installation.