

# SLX-VM



## VENTURI MIXING STATION - HIGH VOLUME

The SLX Mixing Station is a chemical proportioner for precisely measuring and diluting chemical concentrate. The system is ideal for filling jugs and other containers quickly with blended recipes.

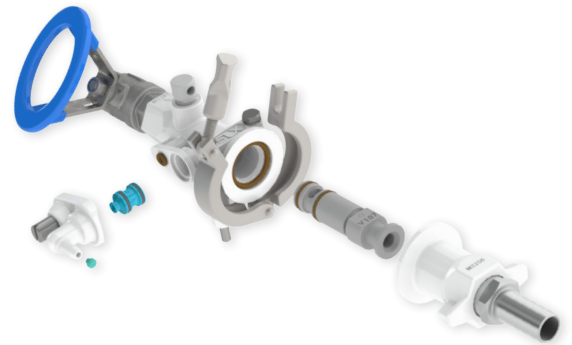
This high volume decentralized mixing station works with city water pressure to dilute chemistry at a range of flow rates to get you accurately measured, ready to use cleaning solution.



### Stainless Steel



### Polypropylene



## FEATURES:

- More efficient and accurate than manual mixing
- Split body design for easy servicing and maintenance (patent pending)
- Tool free maintenance (even the check valves and plumbing components)
- Modular components to alter dilution ratios
- Heavy duty, durable construction
- Lockable stainless-steel cover
- Vacuum breaker plug for quick dispensing
- Large stainless steel ball valve at inlet for hands free mixing

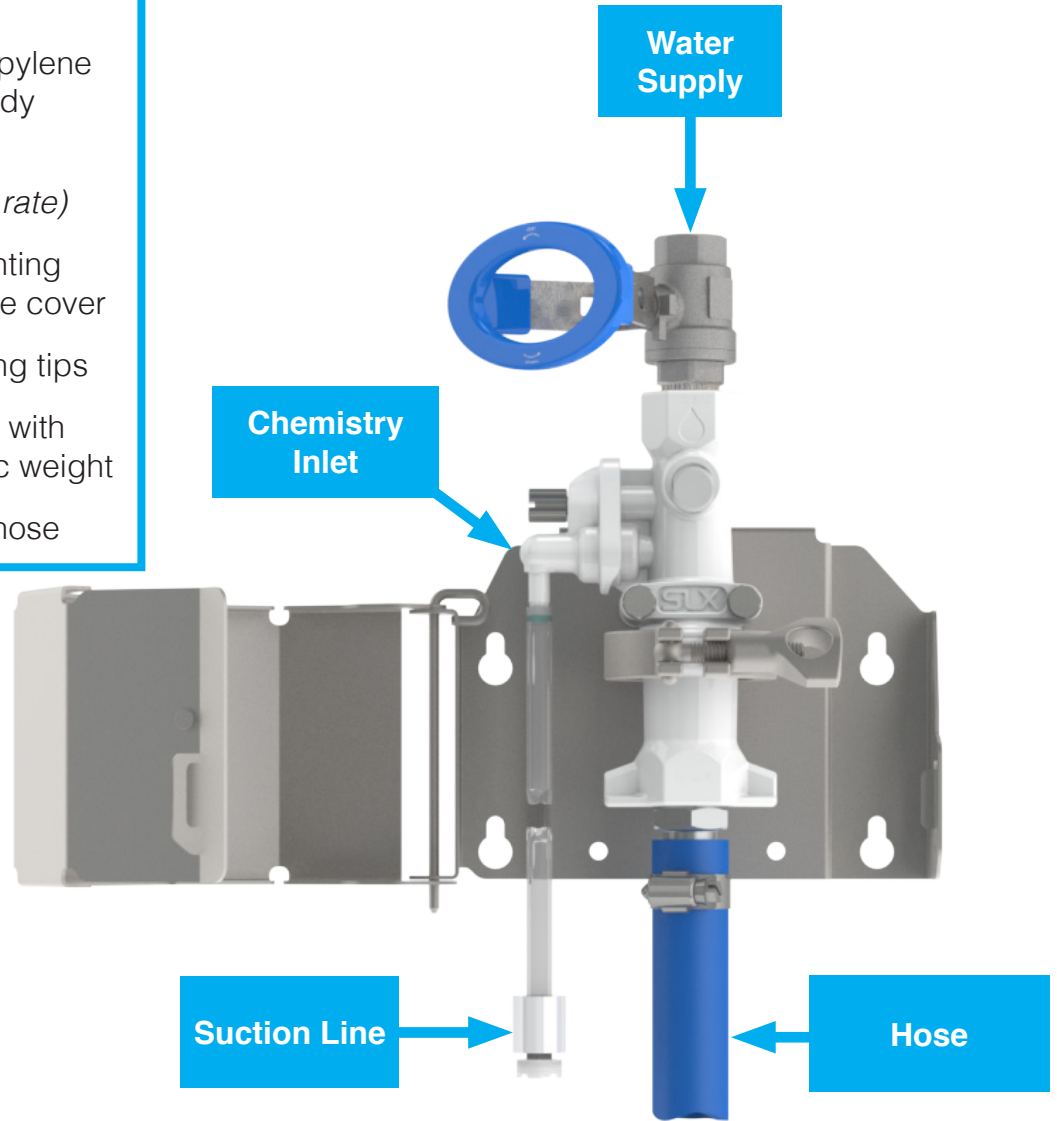
Dimensions	8-1/4" x 10" x 6"
Flow Rate*	10.7 - 12.6 GPM
Max Temperature	160°F
Water Pressure	35-125 PSI
Max Dilution**	27:1 - 11:1

\*Flow rate will vary depending on insert size.

\*\*Dilution range will vary depending on insert and hose size.

## INCLUDES:

- Station with polypropylene or stainless steel body
- PVC venturi insert (dependent on flow rate)
- Stainless steel mounting bracket and lockable cover
- Color coded metering tips
- 1/4" OD suction line with strainer and ceramic weight
- 10' blue discharge hose



*Polypropylene body shown*

## SPECIFICATIONS

Insert #	Water Flow Rate	Hose Size	Dilution Ratios
V107	10.7	3/4" x 10'	3069:1 - 27:1
V126	12.6	3/4" x 10'	2743:1 - 11:1

## PART NUMBER ARCHITECTURE

**SLX-VM** [insert size] [body material]

**107**  
**126**

**S** = Stainless Steel  
**P** = Polypropylene

ex) **SLX-VM107P** = Venturi Mixing Station with V107 insert, and polypropylene body.